

T3 reklamný textil



sketch

starosti s reklamou sú preč

NEW STYLES

01/2022



Articles of the following brands are presented in the catalog:

SOL'S
the fair spirit

JustHoods
RWD®

TEE JAYS

BELLA+CANVAS

KUSTOM KIT.

**JAMES &
NICHOLSON**

Stedman
collection

Beechfield
ORIGINAL HEADWEAR

Neutral.
Certified Responsibility™

ATLANTIS
infra hausrwear

KARLOWSKY

mantis

PREMIER

**BUILD YOUR
BRAND**

FLEXFIT
1st VUPOONG

**BRUNNENITZ
SF**

RYOLY

**Westford
Mill**

BagBase

Mumbles

korntex

promodoro

JustCool
RWD®

QUADRA

miners
mate

seidensticker

HALFAR
Starke Taschen

VOSSEN
A TOUCH OF ENERGY

JHK
T-SHIRT

**mantis
kids**

**TOWEL
CITY**

**REGATTA
PROFESSIONAL**

NL NEXT LEVEL
APPAREL

INDEPENDENT
TRADING COMPANY

ARTG

**BUILD YOUR BRAND
BASIC**

GENUINE RECYCLED

eco
ROLY

WORK-GUARD
by Result

BABYBUGZ

HRM
Stylish for success, made to last

ROLY
FOOTWEAR

Dennys
LONDON

mbw

larkwood
Baby and Toddler Collection

leChef
PROFESSIONAL

RYOLY Sport.

**custom air
bargear**

**FAIR
TOWEL**
Designed in England

CG
WORKWEAR

JustTs
RWD®

**DREAM
ROOTS**

TOMBO

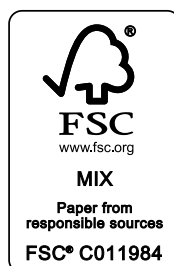
BURNSIDE

**leChef
PREP**

CRAGHOPPERS
EXPERT






THE ONE
TOWELLING

Tiger
Cotton®





ICONS





MATERIAL

-  Organic-Cotton
-  (Parts of) recycled materials
-  Fair working conditions
-  Fairtrade
-  PVC free



LABEL

-  Tear Away (Neck-) Label
-  No (Neck-) Label



CARE INSTRUCTIONS

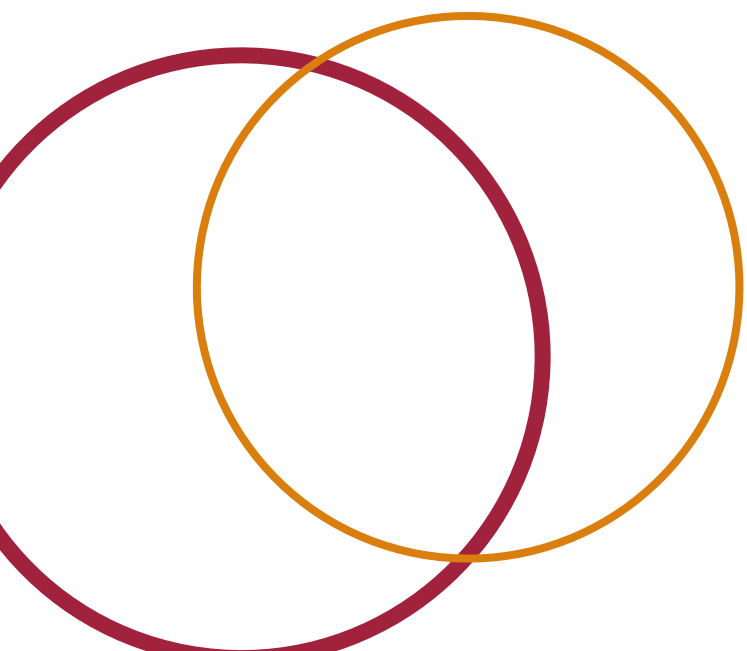
-  Non iron
-  Easy iron
-  Easy Care
-  Washability

HIGH VISIBILITY

-  High-Vis
-  Reflective Elements

SPECIAL FEATURES

-  Detachable Hood
-  Antibacterial
-  Antipilling
-  Breathable
-  Moisture Wicking
-  Suitable for screen size
-  Larger Sizes
-  Shoe with steel toecap
-  Quick Drying
-  Stretch
-  Sublimation Printable
-  Storage Capacity
-  Temperature regulating
-  UV Protection
-  Taped / Sealed Seams
-  Water repellent
-  Waterproof



CONTENT

Basic/Fashion

6 Basic T-Shirts, **12** Fashion T-Shirts,
18 Polo Shirts, **19** Sweat Shirts,
29 Sweat Jackets, **32** Fleece,
34 Bodywarmer, **35** Jackets, **40** Casual

1

Sportswear

42 Sportswear, **45** Sweatpants

2

Corporate Wear

48 Business, **50** Beauty & Medical,
51 Gastronomy, **56** Workwear

3

Kids & Babys

59 Kids, **64** Babys

4

Bags & Co.

66 Bags, **75** Backpacks

5

Headwear

80 Caps, **86** Caps & Hats

6

Accessoires

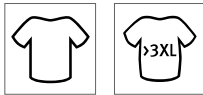
90 Scarves, **91** Terry Towelling,
94 Umbrellas, **95** Home, House & Pet,
97 Stuffed toys

7

BASIC T-SHIRTS



BUILD YOUR BRAND BASIC



BYBB011 | BB011 **Basic Tank**

100% Cotton
XS, S, M, L, XL, XXL, 3XL, 4XL, 5XL
140 g/m²

Build Your Brand Basic

BLACK	BURGUNDY	CHARCOAL	COBALTBUE
HEATHER GREY	NAVY	OLIVE	SAND
TAXI YELLOW	WHITE		

Single jersey | Regular fit | Crew neck



BUILD YOUR BRAND BASIC



BYBB013 | BB013 **Ladies' Wide Neck Tee**

100% Cotton
XS, S, M, L, XL, XXL, 3XL, 4XL, 5XL
140 g/m²

Build Your Brand Basic

BLACK	BURGUNDY	CHARCOAL	CHERRY
HEATHER GREY	NAVY	OLIVE	PINK
TEAL	WHITE		

Single jersey | Loose fit | Crew neck | Wide neckline, can be pulled over a shoulder | Capped short sleeve



ROLY



RY6643 | CA6643 **Women's Cies T-Shirt**

100% Cotton
S, M, L, XL, XXL, 3XL
165 g/m²

Roly

BLACK 02	HEATHER GREY 58	LIGHT PINK 48
NAVY BLUE 55	RED 60	ROSETTE 78
TURQUOISE 12	WHITE 01	

Short-sleeved T-shirt | Crew neck | Neck band and concealed colour-matched seams | Roll-up sleeves | Tear-out label



SF
MEN



SFM130 | SF130 **Unisex Sustainable Generation T**

70% Cotton / 30% Polyester
XXS, XS, S, M, L, XL, XXL, 3XL, 4XL
180 g/m²

SF Men

BLACK	BRIGHT RED	HEATHER GREY
KHAKI	LIGHT STONE	NAVY
ROYAL	STONE BLUE	

Unisex relaxed fit T-Shirt | Regenerated Cotton, Recycled Polyester | Single Jersey | Set-in sleeves | Dropped shoulders | Ribbed crew neck | Twin-needle stitching at hem and sleeves | No label | Re-sealable, recyclable bags - made from 100% recycled plastic



TEE JAYS



TJ0400 | 400 **Stretch Tee**

90% Cotton / 10% Elastane
S, M, L, XL, XXL, 3XL
195 g/m²

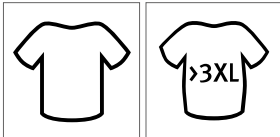
Tee Jays

BLACK	HEATHER GREY	NAVY
WHITE		

90% ringspun combed Cotton / 10% Elastane | Slim fitted men's stretch crew neck tee | Narrow neck rib with elastane | Shoulder-to-shoulder taping for improved stability | 2-layer collar with elastane | Neck tape | Double preshrunk | Double stitched | Full feeder elastane | Enzyme- and silicone wash



BUILD YOUR BRAND BASIC



BYBB010 | BB010 Basic Round Neck T-Shirt

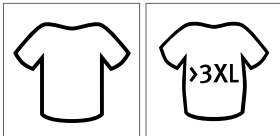
100% Cotton
 XS, S, M, L, XL, XXL, 3XL, 4XL, 5XL
 140 g/m² Build Your Brand Basic

BLACK	BURGUNDY	CHARCOAL
COBALTBUE	HEATHER GREY	NAVY
OLIVE	SAND	TAXI YELLOW
WHITE		

Single jersey | Regular fit | Ribbed round neck | Short, set-in sleeves



BUILD YOUR BRAND BASIC



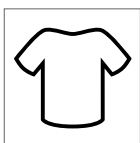
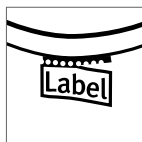
BYBB012 | BB012 Ladies' Basic Tee

100% Cotton
 XS, S, M, L, XL, XXL, 3XL, 4XL, 5XL
 140 g/m² Build Your Brand Basic

BLACK	BURGUNDY	CHARCOAL
CHERRY	HEATHER GREY	NAVY
OLIVE	PINK	TEAL
WHITE		

Single jersey | Regular fit | Ribbed round neck | Short, set-in sleeves

BASIC T-SHIRTS



S7000 | ST7000 **Unisex Lux T-Shirt**

100% Cotton
XS, S, M, L, XL, XXL, 3XL, 4XL, 5XL
 180 g/m² Stedman®

XS, S, M, L, XL, XXL, 3XL, 4XL, 5XL

BLACK OPAL	GREY HEATHER	NAVY BLUE
WHITE		

XS, S, M, L, XL, XXL, 3XL

BLUE MIDNIGHT	BOTTLE GREEN	BRIGHT ROYAL
DARK DENIM HEATHER	DARK GREY HEATHER	KELLY GREEN
ORANGE	SCARLET RED	SLATE GREY (SOLID)
SUNFLOWER YELLOW		

100% ring-spun, combed cotton, single jersey | Unisex round-neck T-shirt | With side seams | Woven premium large label in neck | Tear-away care label in the side seam





S7600 | ST7600 Women's Lux T-Shirt

100% Cotton
XS, S, M, L, XL, XXL, 3XL
160 g/m² Stedman®

XS, S, M, L, XL, XXL, 3XL		
BLACK OPAL	GREY HEATHER	NAVY BLUE
WHITE		
XS, S, M, L, XL, XXL		
BLUE MIDNIGHT	BOTTLE GREEN	BRIGHT ROYAL
DARK DENIM HEATHER	DARK GREY HEATHER	KELLY GREEN
ORANGE	SCARLET RED	SLATE GREY (SOLID)
SUNFLOWER YELLOW		

100% ring-spun, combed cotton (Single jersey) | Round neck T-Shirt | With side seams | Woven premium large label in neck | Tear-away care label in the side seam

SOL'S
the fair spirit



L03805 | 03805

Unisex Odyssey T-Shirt

55% Cotton / 45% Polyester

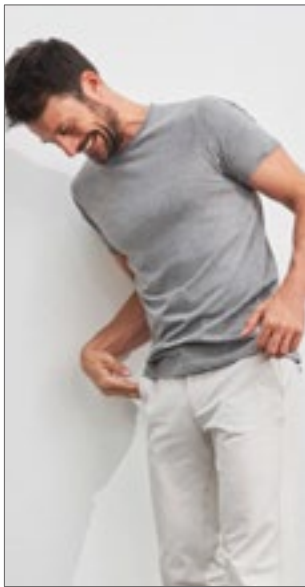
XS, S, M, L, XL, XXL, 3XL, 4XL

170 g/m²

SOL'S

BLACK NAVY WHITE

Unisex | Recycled Cotton / recycled Polyester | Sustainable fabric | Jersey 170 | Round neck T-Shirt | Short sleeves | Rib collar | Natural finish for a soft handfeel | Comfortable cut



JAMES & NICHOLSON



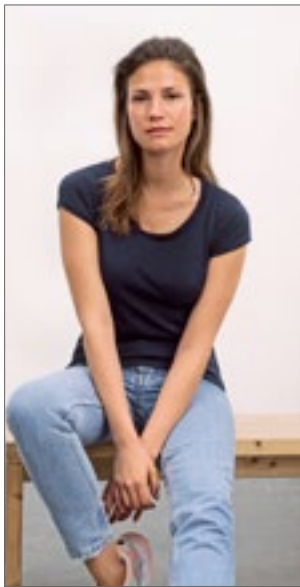
JN8002 | 8002 **Men's-T**

100% Cotton
S, M, L, XL, XXL, 3XL
140 g/m²

James+Nicholson

BLACK	GREY HEATHER	NAVY
RED	WHITE	

Combed, ring-spun organic cotton, single jersey | low cut round neckline and sleeves with roll hem | Tear off!® - Label



JAMES & NICHOLSON



JN8001 | 8001 **Ladies'-T**

100% Cotton
XS, S, M, L, XL, XXL
120 g/m²

James+Nicholson

BLACK	GREY HEATHER	NAVY
RED	WHITE	

Combed, ring-spun organic cotton, single jersey | Low-cut round neckline and sleeves with roll hem | Tear off!® - Label | Slightly fitted



Tiger
Cotton®



NET61001 | T61001 **Unisex Tiger Cotton T-Shirt**

100% Cotton
XS, S, M, L, XL, XXL, 3XL
155 g/m²

Tiger Cotton by Neutral

BLACK	NAVY	SPORT GREY
WHITE		

Fairtrade Cotton in Conversion | Single Jersey | Combed Cotton | Modern fit | Short sleeves | Roundneck | Neckband tape inside



promodoro



E3090 | 3090 **Men's Premium-T Organic**

100% Cotton
XS, S, M, L, XL, XXL, 3XL, 4XL, 5XL, 6XL, 7XL, 8XL
180 g/m²

Promodoro

AZUR BLUE	BLACK	CHARCOAL (SOLID)	FIRE RED
FLAME	FOREST	FRENCH NAVY	KHAKI
LIGHT BLUE	LIME GREEN	STEEL GRAY	WHITE

100% certified organic cotton | Single jersey | Neutral neck label for easy re-labeling



promodoro



E3095 | 3095 **Women's Premium-T Organic**

100% Cotton
XS, S, M, L, XL, XXL, 3XL
180 g/m²

Promodoro

AZUR BLUE	BLACK	CHARCOAL (SOLID)	FIRE RED
FLAME	FOREST	FRENCH NAVY	KHAKI
LIGHT BLUE	LIME GREEN	STEEL GRAY	WHITE

100% certified organic cotton | Single jersey | Neutral neck label for easy re-labeling

FASHION T-SHIRTS



SF230 | SK230

Women's Sustainable Fashion Cropped Cami Top

48% Cotton / 47% Polyester / 5% Elastane

XS, S, M, L, XL, XXL

200 g/m²

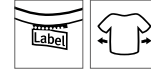
SF Women

BLACK	DUSKY PINK	HEATHER GREY
KHAKI		

Regenerated Cotton, Recycled Polyester | Single Jersey | Adjustable spaghetti straps | Bound neck and armholes | Double layer front for secret support | Rib-length with concealed elastic band | No label | Re-sealable, recyclable bags - made from 100% recycled plastic



BELLA+CANVAS



BL6003 | 6003

Women's Jersey Muscle Tank

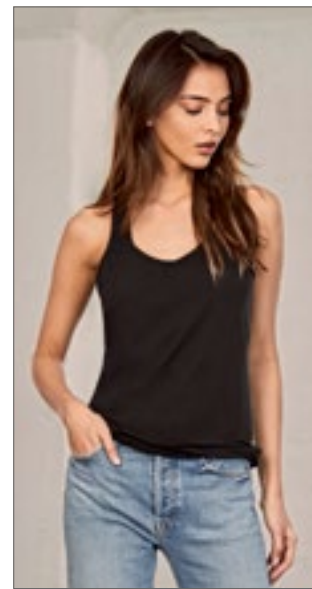
100% Cotton (Athletic Heather: 90% Cotton / 10% Polyester), (Heather Colours: 52% Cotton / 48% Polyester)

S, M, L, XL

Bella

ATHLETIC HEATHER	BLACK	DARK GREY HEATHER
HEATHER DEEP TEAL	HEATHER PEACH	LILAC
MAUVE	MILITARY GREEN	NAVY
WHITE		

Airlume combed and ring-spun cotton | Side-seamed | Relaxed fit | Low cut armhole | Tear-away label | Pre-shrunk



BELLA+CANVAS



BL6008 | 6008

Women's Jersey Racerback Tank

100% Cotton (Athletic Heather: 90% Cotton / 10% Polyester), (Heather Colours: 52% Cotton / 48% Polyester)

S, M, L, XL

Bella

ATHLETIC HEATHER	BLACK	DARK GREY HEATHER
HEATHER MAUVE	MAROON	MILITARY GREEN
NAVY	RED	SUNSET
TRUE ROYAL	WHITE	

Airlume combed and ring-spun cotton | Side-seamed | Racerback | Relaxed fit | Tear-away label | Pre-shrunk



SFM140 | SF140

Unisex Organic T

100% Cotton

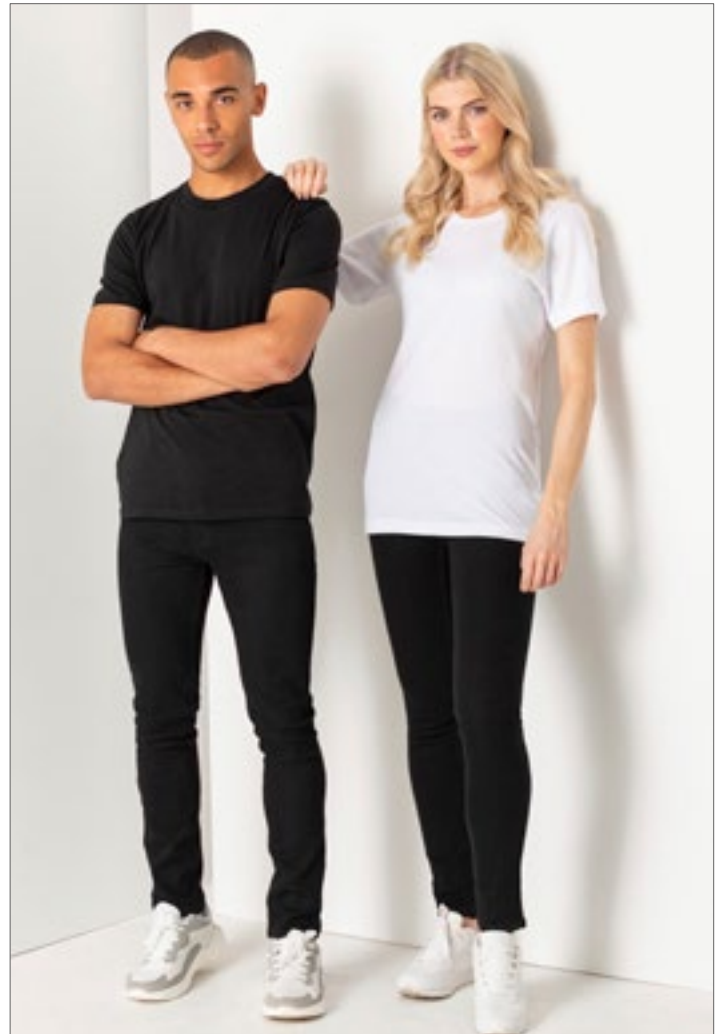
XXS, XS, S, M, L, XL, XXL, 3XL, 4XL

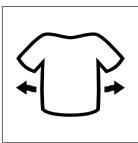
150 g/m²

SF Men

BLACK	WHITE
-------	-------

Unisex relaxed fit T-Shirt | Organic Cotton | Single Jersey | Set-in sleeves | Ribbed crew neck | Twin-needle stitching at hem and sleeves | No label | Re-sealable, recyclable bags - made from 100% recycled plastic





SOL'S



SOL'S

SOL'S
the fair spirit

L03806 | 03806 **Men's Boxy Oversized T-Shirt**

100% Cotton
S, M, L, XL, XXL
180 g/m² SOL'S

CREAMY WHITE	DEEP BLACK	FRENCH NAVY	LIGHT YELLOW
LILAC	WHITE		

Oversized T-Shirt | Combed organic Cotton | Jersey 180 | Falling sleeves | Rib collar

L03807 | 03807 **Women's Boxy Oversized T-Shirt**

100% Cotton
XS, S, M, L, XL
180 g/m² SOL'S

CREAMY WHITE	DEEP BLACK	FRENCH NAVY	LIGHT YELLOW
LILAC	WHITE		

Oversized T-Shirt | Combed organic Cotton | Jersey 180 | Falling sleeves | Rib collar

mantis



P03 | M03

Essential Heavy T

100% Cotton

XS, S, M, L, XL, XXL, 3XL

220 g/m²

Mantis

BLACK | HEATHER GREY | NAVY | **SOFT PINK** | WHITE

Organic or in Conversion to Organic Cotton | Single Jersey | Unisex style | Soft heavyweight organic cotton | Relaxed fit | Twin needle hem at sleeves and bottom | Fine 1x1 neck rib | Tear-off back neck label | Care label with QR code to follow supply chain and check positive impact of buying organic | Care label made from organic cotton



BY193 | BY193 **Huge Tee**
 100% Cotton
S, M, L, XL, XXL, 3XL, 4XL, 5XL
 240 g/m² Build Your Brand

BLACK **WHITE** **WHITE SAND**

Single jersey | Oversize fit | Extra wide, dropped and long sleeves | Round neckline



BY189 | BY189 **Acid Washed Heavy Oversize Tee**
 100% Cotton
XS, S, M, L, XL, XXL, 3XL, 4XL, 5XL
 240 g/m² Build Your Brand

ASPHALT **BLACK** **DARK KHAKI**

Single jersey | Oversize fit | Ribbed round neck | Drop Shoulder | Acid wash



BY190 | BY190 **Acid Washed Round Neck Tee**
 100% Cotton
XS, S, M, L, XL, XXL, 3XL, 4XL, 5XL
 180 g/m² Build Your Brand

ASPHALT **BLACK** **DARK KHAKI**

Single jersey | Regular fit | Ribbed round neck | Acid wash



BY198 | BY198 **Oversized Cut On Sleeve Longsleeve**
 100% Cotton
XS, S, M, L, XL, XXL, 3XL, 4XL, 5XL
 220 g/m² Build Your Brand

BLACK **SAND** **WHITE**

Single jersey | Oversize fit | Ribbed round neck | Drop Shoulder



BY178 | BY178 **Turtle Neck Longsleeve**
 100% Cotton
XS, S, M, L, XL, XXL, 3XL, 4XL, 5XL
 200 g/m² Build Your Brand

BLACK **WHITE**

Single jersey | Regular fit | Turtleneck design | Long sleeves with narrow cuffs

Just Ts
*RWD*is



JT022 | JT022 **Tie-Dye T**

100% Cotton
XS, S, M, L, XL, XXL
 140 g/m² Just Ts

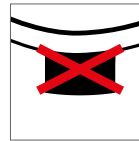
BLUE CLOUD **GREY PINK MARBLE** **PASTEL SUNSET DIP**
TIE-DYE SWIRL

Combed Ringspun Cotton | Modern fit with side seams | Short sleeves | Tie-Dye Design | Every piece is unique | Size label only | Unisex | Taped neck | Ribbed crew neck style | Twin needle stitching detail on sleeve and bottom hem





JustTs
AWDts



JT009 | JT009 **OverSize 100 T**

100% Cotton
S, M, L, XL, XXL
190 g/m²

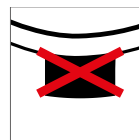
Just Ts

DEEP BLACK WHITE

Combed Ringspun Cotton | Oversized fit | Side seams | Short Sleeves | Ribbed crew neck style, with taped neck | Set in sleeve | Size label only | Unisex | Twin needle stitching detail on sleeves and bottom hem



JustTs
AWDts



JT016 | JT016 **Women's Long Sleeve Cropped T**

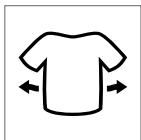
50% Polyester / 25% Viscose / 25% Cotton (Heather Black: 40% Viscose / 40% Cotton / 20% Polyester)

XS, S, M, L, XL
160 g/m²

Just Ts

DUSTY PINK HEATHER BLACK SOLID WHITE

Cropped Women's fit with side seams | Long sleeves with cuffs | Size label only | Tri- blend fabric | Ribbed crew neck style, with taped neck | Twin needle stitching detail on sleeve and bottom hem



TJ1404 | 1404

**Luxury Stretch V-Neck
Polo**

95% Cotton / 5% Elastane

S, M, L, XL, XXL, 3XL

215 g/m²

Tee Jays

BLACK NAVY WHITE

95% ringspun combed organic Cotton / 5% Elastane |
Mini piqué | Tailored fit | Flat knit collar with Elastane |
Clean finished placket | Double pre-shrunk | Neck
tape | Ring-spun cotton





TEE JAYS



TJ07000 | 7000 **Club Polo**

95% Polyester / 5% Elastane

S, M, L, XL, XXL, 3XL, 4XL, 5XL

187 g/m²

Tee Jays

S, M, L, XL, XXL, 3XL, 4XL, 5XL

BLACK NAVY

S, M, L, XL, XXL, 3XL

DARK GREEN	DARK GREY (SOLID)	DUSTY ORANGE
ELECTRIC BLUE	RED	WHITE

95% recycled Polyester / 5% Elastane | Tailored fit | Breathable | Moisture wicking | Quick drying | Easy to wash and care | Flat knitted collar | Clean finished placket



BUILD YOUR BRAND



BY173 | BY173 **Organic Basic Crew**

100% Cotton

S, M, L, XL, XXL, 3XL, 4XL, 5XL

300 g/m²

Build Your Brand

BLACK HEATHER GREY

Organic cotton, brushed inside | Regular fit | Round neckline | Wide ribbed cuffs and ribbed hem



SOL'S
the fair spirit



L03814 | 03814 **Unisex Columbia Crew Neck Sweatshirt**

80% Cotton / 20% Polyester

XS, S, M, L, XL, XXL, 3XL, 4XL, 5XL

280 g/m²

SOL'S

XS, S, M, L, XL, XXL, 3XL, 4XL, 5XL

BLACK	BOTTLE GREEN	FRENCH NAVY
GREY MELANGE	ROYAL BLUE	WHITE

XS, S, M, L, XL, XXL, 3XL

BRIGHT RED	BURGUNDY	CHARCOAL MELANGE
CREAMY BLUE	CREAMY GREEN	CREAMY PINK
KELLY GREEN	LIGHT YELLOW	LILAC
ORANGE		

Unisex | Cotton / recycled Polyester | Crew Neck | Ribbed collar, cuff and hem | Taped neck | Set-in sleeves | Brushed fleece | Tear-Away label



mantis



P05 | M05 **Essential Sweatshirt**

80% Cotton / 20% Polyester

XS, S, M, L, XL, XXL, 3XL

280 g/m²

Mantis

BLACK	BURGUNDY	HEATHER GREY
NATURAL	NAVY	SOFT OLIVE
SOFT PINK		

Organic or in Conversion to Organic Cotton / recycled Polyester (rPET) | Brushed Fleece | Unisex styles | Set-in sleeves | Rib at collar, cuffs and bottom hem | Self-coloured herringbone back neck tape | Locker patch at back neck | Tear-off back neck label | Care label with QR code to follow supply chain and check positive impact of buying organic | Care label made from organic cotton



Tiger
Cotton®



NET63001 | T63001 **Unisex Tiger Cotton Sweatshirt**

100% Cotton

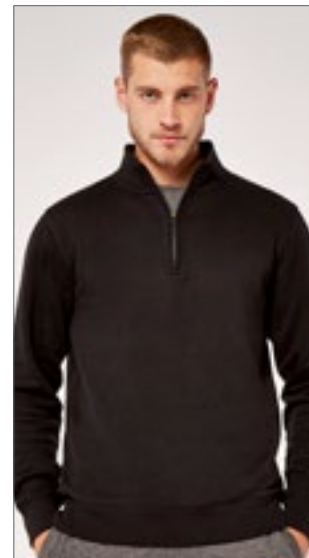
XS, S, M, L, XL, XXL, 3XL

300 g/m²

Tiger Cotton by Neutral

BLACK NAVY SPORT GREY

Fairtrade Cotton in Conversion | Combed Cotton | Fleece with brushed backside | Crewneck | Raglan sleeves | Rib at sleeves and bottom



KUSTOM KIT.



K335 | KK335 **Regular Fit 1/4 Zip Sweatshirt**

80% Cotton / 20% Polyester

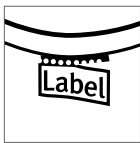
XS, S, M, L, XL, XXL

280 g/m²

Kustom Kit

BLACK DARK GREY NAVY

Men's 1/4 zip front sweatshirt with cadet collar | Regular fit | Self colour woven tape to inside of neck and back of zip | Taped shoulders | Full needle rib double layered cuff and welt applied with twin needle stitching | Double layered collar | Double stitched shoulders and armholes | Zirconium coloured metal zip and puller | Tear out label | Covered zip for enhanced printability | Full needle ribbed welt and cuff for shape recovery



SFM530 | SF530

Unisex Sustainable Fashion Sweat

60% Cotton / 40% Polyester

XXS, XS, S, M, L, XL, XXL, 3XL

260 g/m²

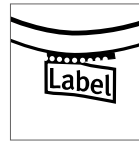
SF Men

BLACK	HEATHER GREY	KHAKI
LIGHT STONE	STONE BLUE	

Unisex relaxed fit sweat | Regenerated Cotton / Recycled Polyester | Brushed Back Fleece | Set-in sleeves, dropped shoulders | Droptail hem - curved high front, low back | Ribbed hem cuffs and crew neck | Single jersey back neck tape and facing | Tonal topstitching detail | No label | Re-sealable, recyclable bags- made from 100% recycled plastic



JustHoods
AWDis



JH030F | JH030F **Women's AWDIs Sweat**

80% Cotton / 20% Polyester (Heather Grey: 75% Cotton / 25% Polyester)

XS, S, M, L, XL, XXL

280 g/m²

Just Hoods

ARCTIC WHITE	DEEP BLACK	DUSTY GREEN
DUSTY PINK	HEATHER GREY	NEW FRENCH NAVY

Ringspun Cotton | Classic fit | Crew neckline | Twin needle stitching | Brushed inner fleece | Ribbed cuffs and hem | Soft cotton faced fabric | Tear out label



JustHoods
AWDis



JH037 | JH037 **Women's Cropped 1/4 Zip Sweat**

80% Cotton / 20% Polyester

XXS, XS, S, M, L, XL

280 g/m²

Just Hoods

ARCTIC WHITE	DEEP BLACK	DUSTY ROSE
LAVENDER	SKY BLUE	

Ringspun Cotton | Regular fit | Funnel neck | Quarter zip fastening | Cropped style | Elasticated hem | Brushed inner fleece | Ribbed cuffs | Soft cotton faced fabric | Tear out label

SWEAT SHIRTS



E5052 | 5052 **Unisex Troyer Side Pocket**

68% Cotton / 32% Polyester
XS, S, M, L, XL, XXL, 3XL, 4XL, 5XL
325 g/m²

Promodoro

BLACK	CHARCOAL (SOLID)	KHAKI
NAVY	NEW LIGHT GREY (SOLID)	STEEL GRAY

Sweatshirt, Molton brushed | Neck half-moon | Colour-matched zip on collar | Offset side seam | Side pocket | Elasticated cuffs on sleeves and hem



HRM903 | 903 **Unisex Premium Raglan Hoody**

70% Cotton / 30% Polyester
XS, S, M, L, XL, XXL, 3XL, 4XL, 5XL, 6XL
320 g/m²

HRM

BLACK	DARK GREY	GREY MELANGE
NAVY	RED	WHITE

Ringspun and combed cotton/recycled polyester (brushed on the inside) | Soft mixed fabric | Anti-pilling and pre-shrunk, colourfast | Seam, pocket edges and cuffs are provided with high-quality 1x1 ribbed knit | All seams are enhanced with flat decorative stitching | In each case three metal eyelets in antique look | Broad tone-in-tone cord | Raglan-style sleeves | Label-free



NET63101 | T63101 **Unisex Tiger Cotton Hoodie**

100% Cotton
XS, S, M, L, XL, XXL, 3XL
300 g/m²

Tiger Cotton by Neutral

BLACK	NAVY	SPORT GREY
-------	------	------------

Fairtrade Cotton in Conversion | Combed Cotton | Fleece with brushed backside | Double lined hood | Kangaroo pocket | Rib at sleeves and bottom | Flat strings



JN8034 | 8034 **Men's Lounge Hoody**

85% Cotton / 15% Polyester
S, M, L, XL, XXL, 3XL
300 g/m²

James+Nicholson

GRAPHITE	JADE GREEN	LIGHT BLUE
NAVY	SOFT GREY	VANILLA

Combed, ring-spun organic cotton/polyester | Slightly oversized | High-quality sweat fabric with roughened inside | Double layered hood with drawcord and cord stopper | Elastane collar | Tear off!® - Label



JN8033 | 8033 **Ladies' Lounge Hoody**

85% Cotton / 15% Polyester
XS, S, M, L, XL, XXL
300 g/m²

James+Nicholson

GRAPHITE	JADE GREEN	LIGHT BLUE
NAVY	SOFT GREY	SOFT PINK
VANILLA		

Combed, ring-spun organic cotton/polyester | Slightly oversized | High-quality sweat fabric with roughened inside | Double-layered hood with drawstring and cord stopper | Elastane collar | Tear off!® - Label



P04 | M04 **Essential Hoodie**

80% Cotton / 20% Polyester
XS, S, M, L, XL, XXL, 3XL
280 g/m²

Mantis

BLACK	BURGUNDY	HEATHER GREY
NATURAL	NAVY	SOFT OLIVE
SOFT PINK		

Organic or in Conversion to Organic Cotton / recycled Polyester (rPET) | Brushed Fleece | Unisex style | Set-in sleeves | Double layered hood | Round self-coloured drawcords with metal tipping | Metal eyelets | Self-colour herringbone back neck tape | Locker patch at back neck | Rib at cuffs and bottom hem | Kangaroo pocket | Tear-off back neck label | Care label with QR code to follow supply chain and check positive impact of buying organic | Care label made from organic cotton



NL | **NEXT LEVEL**
APPAREL

NX9304 | 9304 **Sueded French Terry Pullover Hoody**

60% Cotton / 40% Polyester

XS, S, M, L, XL, XXL, 3XL

280 g/m²

Next Level Apparel

BLACK

HEATHER GREY

MAROON

MIDNIGHT NAVY

MILITARY GREEN

STONEWASH DENIM

WHITE

Combed Ring-Spun Cotton / Polyester Sueded French Terry Fleece | Contrast 3/8" Back Neck Binding | Regular fit | Soft sueded face

SOL'S
the fair spirit



L03813 | 03813

Unisex Connor Oversized Hoodie

100% Cotton
XS, S, M, L, XL, XXL
450 g/m²

SOL'S

BLACK BRIGHT RED FRENCH NAVY KHAKI MOUSE GREY (SOLID) WHITE

Unisex Oversized Hoodie | Organic Cotton | French Terry | Set-in sleeves | Side seam | Crossed neck | Kangaroo pockets | Lined Hood in shell fabric | Taped neck



L03815 | 03815 **Unisex Condor Hooded Sweatshirt**

80% Cotton / 20% Polyester
XS, S, M, L, XL, XXL, 3XL, 4XL, 5XL
280 g/m²

SOL'S

XS, S, M, L, XL, XXL, 3XL, 4XL, 5XL

BLACK BOTTLE GREEN FRENCH NAVY GREY MELANGE ROYAL BLUE WHITE

XS, S, M, L, XL, XXL, 3XL

ARMY ASH (HEATHER) BLUE BRIGHT RED BURGUNDY CHARCOAL MELANGE CREAMY BLUE CREAMY GREEN CREAMY PINK
GOLD LIGHT YELLOW LILAC

Unisex | Cotton / recycled Polyester | Set-in- sleeves | Ribbed collar, cuff and hem | Kangaroo pocket | Lined hood with tone-on-tone lace and metal eyelets | Brushed fleece | Tear-Away label

SOL'S®
the fair spirit



SOL'S



SOL'S



L03818 | 03818

**Unisex Collins Hooded
Sweatshirt**

80% Cotton / 20% Polyester

XS, S, M, L, XL, XXL, 3XL

280 g/m²

SOL'S

CREAMY BLUE/CREAMY WHITE/CREAMY GREEN CREAMY WHITE/CREAMY PINK/CREAMY BLUE
NATURAL/CREAMY BLUE/LIGHT GREY (SOLID)

Unisex | Combed organic Cotton / recycled Polyester
| Tricolor, color-blocking | Kangaroo pocket | Lined
hood with drawstring | Ribbed collar, cuff and hem
| Half moon inside the collar | Taped neck | Brushed
fleece | Modern and comfortable cut





BY199 | BY199
Oversized Cut On Sleeve Hoody
 65% Cotton / 35% Polyester
S, M, L, XL, XXL, 3XL, 4XL, 5XL
 300 g/m² Build Your Brand

BARK BLACK GREY

Oversize fit | Brushed inside | Dropped shoulders with sleeves further down | Cross-necked hood | Classic wide ribbed cuffs and ribbed hem



BY183 | BY183
Ladies' Organic Oversized Hoody
 100% Cotton
XS, S, M, L, XL, XXL, 3XL, 4XL, 5XL
 300 g/m² Build Your Brand

BLACK DUSK ROSE SOFT YELLOW

Organic cotton, brushed inside | Oversize fit | Drop Shoulder | Extra wide sleeves | Wide ribbed cuff and hem | Fluffy hood



BY191 | BY191
Acid Washed Oversize Hoody
 100% Cotton, Ribbündchen: 95% Cotton / 5% Elastane
XS, S, M, L, XL, XXL, 3XL, 4XL, 5XL
 300 g/m² Build Your Brand

ASPHALT BLACK

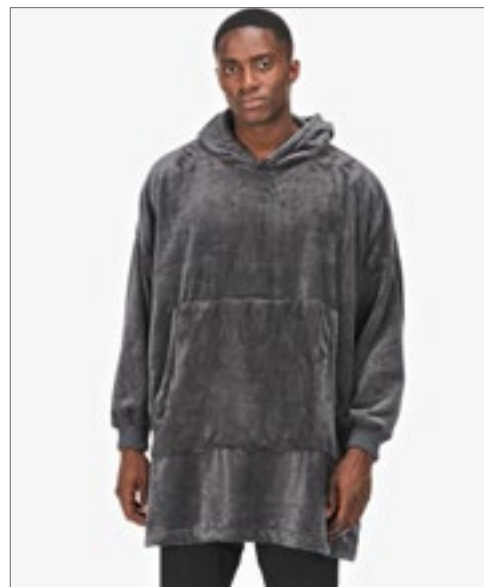
Oversize fit | Terry | 1x1 rib stitch | Acid wash | Drop Shoulder | Hood with a central separating seam, without drawstrings | With ribbed cuffs and hem



BY194 | BY194
Ladies' Acid Washed Oversize Hoody
 100% Cotton, Ribbündchen: 95% Cotton / 5% Elastane
XS, S, M, L, XL, XXL, 3XL, 4XL, 5XL
 300 g/m² Build Your Brand

ASPHALT BLACK

Oversize fit | Terry | 1x1 rib stitch | Acid wash | Hood | Pouch pocket



RG0667 | TRF667
Snuggler Oversized Fleece Hoodie
 100% Polyester
S, M, L, XL, XXL, 3XL
 260 g/m² Regatta Professional

NAVY SEAL GREY

Polyester fluffy fleece | Brushed back fabric | Drop shoulder silhouette | Kangaroo pocket to front

JustHoods®
RWD is



JH022 | JH022 **Tie-Dye Hoodie**

80% Cotton / 20% Polyester

XS, S, M, L, XL, XXL

280 g/m²

Just Hoods



Ringspun Cotton | Relaxed fit | Twin needle stitching detail | Double fabric hood with round drawcords | Kangaroo pouch pocket | Brushed inner fleece | Ribbed cuffs and hem | Tie-Dye Design | Every piece is unique | Size Pip





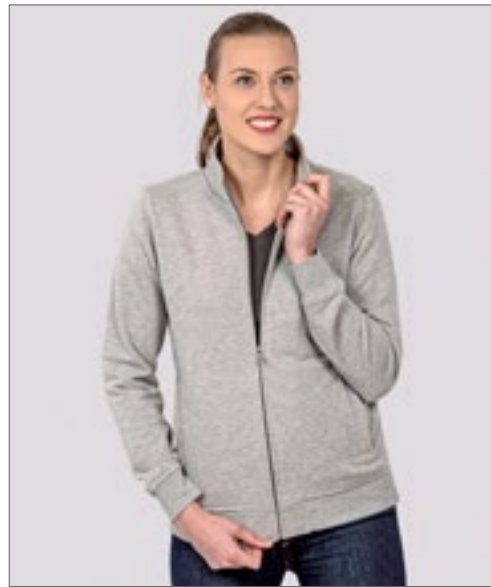
HRM1001 | 1001 **Men's Premium Full-Zip Sweat Jacket**

70% Cotton / 30% Polyester
S, M, L, XL, XXL, 3XL, 4XL, 5XL, 6XL
360 g/m²

HRM

BLACK	DARK GREY	GREY MELANGE	NAVY
RED	WHITE		

Ring-spun, combed cotton/recycled polyester (French Terry) | Modern regular fit | Anti-pilling and pre-shrunk, colourfast | 2 x side zipped pockets | With high-quality, 1x1 ribbed knit hems, pocket openings and cuffs | Elegant yet robust look | Industrial laundry | Label-free



HRM1002 | 1002 **Women's Premium Full-Zip Sweat Jacket**

70% Cotton / 30% Polyester
XS, S, M, L, XL, XXL, 3XL, 4XL, 5XL
360 g/m²

HRM

BLACK	DARK GREY	GREY MELANGE	NAVY
RED	WHITE		

Ringspun and combed cotton/recycled polyester (French Terry) | Modern regular fit | Anti-pilling and pre-shrunk, colourfast | 2 x side zipped pockets | Seam, pocket edges and cuffs are provided with high-quality 1x1 ribbed knit | Elegant appearance and yet still robust | Industrial laundry | Label-free



BU3901 | 3901 **Men's Full Zip Sweater Knit Jacket**

100% Polyester
S, M, L, XL, XXL, 3XL
220 g/m²

Burnside

HEATHER BLACK	HEATHER CHARCOAL	HEATHER GREY	HEATHER NAVY
HEATHER RED	STEEL		

100% poly fleece | Convertible Collar | Full-zip with puller cover | Raglan sleeves for mobility | Zippered left chest pocket | Covered zippered side pockets | Metal zipper pullers | Piped cuffs and hem



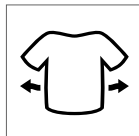
TJ5440 | 5440 **Full Zip Sweat Cardigan**

70% Cotton / 30% Polyester
XS, S, M, L, XL, XXL, 3XL, 4XL, 5XL
310-320 g/m²

Tee Jays

BLACK	
XS, S, M, L, XL, XXL, 3XL	
DARK GREY (SOLID)	NAVY

70% ringspun Cotton / 30% Polyester | Classic full zip cardigan in brushed heavyweight sweatshirt material | Double-stitched elastic cuffs | Ribbed raised collar and waistband | Two front pockets with zippers | Elastane in all ribs | 3 thread fabric | Brushed inside | Double dyed



BY192 | BY192 **Ultra Heavy Zip Hoody**

100% Cotton

XS, S, M, L, XL, XXL, 3XL, 4XL, 5XL

460 g/m²

Build Your Brand

BLACK **HEATHER GREY**

Ultra heavy terry | Loose fit | Full-length metal zip | Hood | Wide ribbed cuff and hem | Split kangaroo pouch pocket



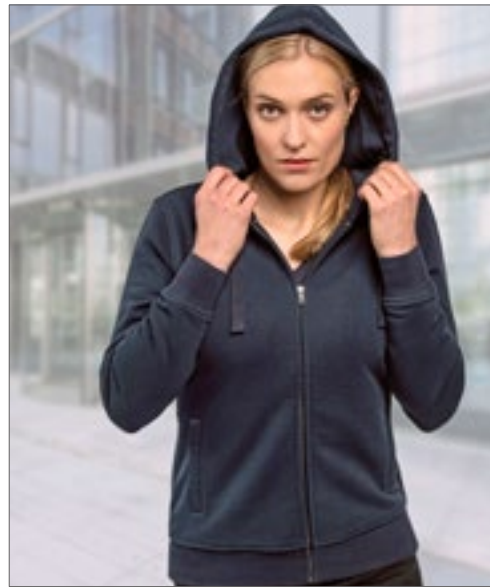
HRM707 | 707 **Men's Premium Hooded Jacket**

70% Cotton / 30% Polyester
S, M, L, XL, XXL, 3XL, 4XL, 5XL, 6XL
320 g/m²

HRM

BLACK	DARK GREY	GREY MELANGE	NAVY
RED	WHITE		

Ringspun and combed cotton/recycled polyester (brushed on the inside) | Soft mixed fabric | Modern regular fit | Anti-pilling and pre-shrunk, colourfast | Two side pockets with zip and two inside pockets | Seam, pocket edges and cuffs are provided with high-quality 1x1 ribbed knit | All seams are enhanced with flat decorative stitching | In each case three metal eyelets in antique look (stonewashed) | Broad tone-in-tone cord | Label-free



HRM807 | 807 **Women's Premium Hooded Jacket**

70% Cotton / 30% Polyester
XS, S, M, L, XL, XXL, 3XL, 4XL, 5XL
320 g/m²

HRM

BLACK	DARK GREY	GREY MELANGE	NAVY
RED	WHITE		

Ringspun and combed cotton/recycled polyester (brushed on the inside) | Soft mixed fabric | Modern regular fit | Anti-pilling and pre-shrunk, colourfast | Two side pockets with zip and two inside pockets | Seam, pocket edges and cuffs are provided with high-quality 1x1 ribbed knit | All seams are enhanced with flat decorative stitching | In each case three metal eyelets in antique look (stonewashed) | Broad tone-in-tone cord | Label-free



NET63301 | T63301 **Unisex Tiger Cotton Hoodie With Zipper**

100% Cotton
XS, S, M, L, XL, XXL, 3XL
300 g/m²

Tiger Cotton by Neutral

BLACK	NAVY	SPORT GREY
-------	------	------------

Fairtrade Cotton in Conversion | Combed Cotton | Fleece with brushed backside | Matching YKK zipper | Double lined hood | Kangaroo pocket | Rib at sleeves and bottom | Flat strings



BU8620 | 8620 **Men's Flannel Jacket With Sherpa Hoodie**

100% Cotton
S, M, L, XL, XXL, 3XL
260 g/m²

Burnside

BLACK - GREY (CHECKED)	GREY - BLUE (CHECKED)	RED - NAVY (CHECKED)
------------------------	-----------------------	----------------------

100% cotton shell, 100% poly filling | Sherpa lined hood with drawcords | Full zip front with nylon zipper | Side pockets | 2 chest pocket with flaps | Adjustable button cuffs

FLEECE



Craghoppers
EXPERT



CEA004 | CEA004 **Expert Active Half Zip Fleece**

100% Polyester
XS, S, M, L, XL, XXL, 3XL
220 g/m²

Craghoppers Expert

CARBON GREY MARL POSEIDON BLUE MARL POTTERS CLAY MARL

100% recycled Polyester | Textured half-zip microfleece top with elasticated-bound hem and cuffs | Zipped chest pocket | Approximately 30 bottles were recycled to make this product



promodoro



E7921 | 7921 **Men's Recycled Fleece Troyer**

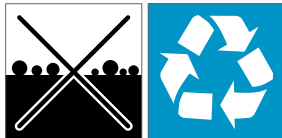
100% Polyester
S, M, L, XL, XXL, 3XL, 4XL, 5XL
250 g/m²

Promodoro

AZUR BLUE BLACK FRENCH NAVY LIME GREEN
STEEL GRAY WHITE

100% recycled polyester, fleece | Anti-pilling | Stand-up collar with zip | Narrow elasticated cuffs and hem | Offset shoulder and side seam

promodoro



E7925 | 7925 **Women's Recycled Fleece Troyer**

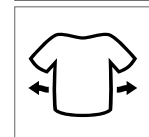
100% Polyester
S, M, L, XL, XXL, 3XL
250 g/m²

Promodoro

AZUR BLUE BLACK FRENCH NAVY
LIME GREEN STEEL GRAY WHITE

100% recycled polyester, fleece | Anti-pilling | Stand-up collar with zip | Narrow elastic cuffs on sleeves and hem | Offset shoulder and side seam





L03823 | 03823 **Men's Factor Zipped Fleece Jacket**
 100% Polyester
S, M, L, XL, XXL, 3XL, 4XL, 5XL
 280 g/m² SOL'S

BLACK	CHARCOAL GREY (SOLID)	FOREST GREEN	NAVY
ORANGE	RED	ROPE	ROYAL BLUE

Recycled Polyester | Sustainable fabric | Polar fleece 280 | Stretch | Zipped side pockets and main opening with zip pull | Reinforcement band on collar | Elastic bias at cuffs and hem | Tear-Away label

L03824 | 03824 **Women's Factor Zipped Fleece Jacket**
 100% Polyester
S, M, L, XL, XXL, 3XL
 280 g/m² SOL'S

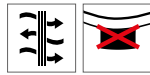
BLACK	CHARCOAL GREY (SOLID)	FOREST GREEN	NAVY
ORANGE	RED	ROPE	ROYAL BLUE

Recycled Polyester | Sustainable fabric | Polar fleece 280 | Stretch | Zipped side pockets and main opening with zip pull | Reinforcement band on collar | Elastic bias at cuffs and hem | Tear-Away label

BODYWARMER



HRM
Stylish to impress, made to last



HRM1301 | 1301 **Men's Hooded Performance Body Warmer**

100% Polyamide
S, M, L, XL, XXL, 3XL, 4XL, 5XL
100 g/m²

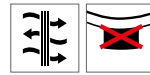
HRM

BLACK DARK GREY NAVY

Classic look | Made from very lightweight, soft and robust material | Breathable and water resistant | Hood integrated in collar with zip | Two side pockets and one breast pocket on the right, each with colour-contrast zip | Two inside pockets and an embroidery pocket on the inside left | Quilting in the breast area | Label-free



HRM
Stylish to impress, made to last



HRM1302 | 1302 **Women's Hooded Performance Body Warmer**

100% Polyamide
XS, S, M, L, XL, XXL, 3XL
100 g/m²

HRM

BLACK DARK GREY NAVY

Classic look | Made from very light, soft and robust material | Breathable and water resistant | Hood integrated in collar with zip | Two side pockets and one breast pocket on the right, each with colour-contrast zip | Two inside pockets and a finished pocket on the inside left | Broad quilted surface in the breast area | Label-free



STORMTECH®



ST122 | AFV-1 **Men's Stavanger Thermal Vest**

100% Nylon
S, M, L, XL, XXL, 3XL

Stormtech

BLACK/GRAPHITE NAVY/GRAPHITE

100% Nylon, 40gsm | Water Resistance 600mm, Breathability 1,000g/m² | Cold: +10°C (50°F) to -10°C (14°F) | D/W/R Outer Shell | PFC-Free Durable Water Repellent Finish | Feather Free Thermal Shell | Broken Fiber Polyfill | Packable into Own Pocket | Ergonomic Fit | Adjustable Hem | Audio System | Internal Pocket | Lightweight



SOL'S
the fair spirit



L03825 | 03825 **Men's Falcon Zipped Softshell Bodywarmer**

94% Polyester / 6% Elastane, Inner: 100% Polyester
S, M, L, XL, XXL, 3XL, 4XL
270 g/m²

SOL'S

ABYSS BLUE BLACK CHARCOAL GREY (SOLID)
FOREST GREEN PEPPER RED ROYAL BLUE

Recycled Polyester / Elastane - 3 layers, Fleece inside: 100% Polyester | Sustainable fabric | Softshell 270 | Comfortable cut | Zipped opening | 2 side pockets and 1 zipped chest pocket | Contrasting zippers | Elastic bias at armholes and hem | Tear-Away label



SOL'S
the fair spirit



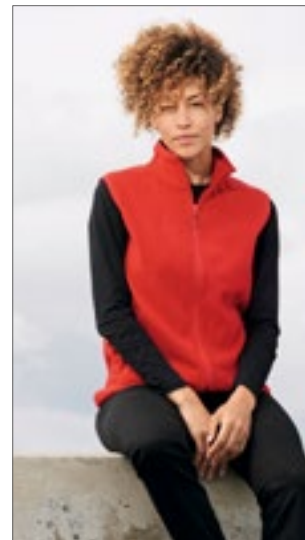
L03826 | 03826 **Women's Falcon Zipped Softshell Bodywarmer**

94% Polyester / 6% Elastane, Inner: 100% Polyester
S, M, L, XL, XXL, 3XL
270 g/m²

SOL'S

ABYSS BLUE BLACK CHARCOAL GREY (SOLID)
FOREST GREEN PEPPER RED ROYAL BLUE

Recycled Polyester / Elastane - 3 layers, Fleece inside: 100% Polyester | Sustainable fabric | Softshell 270 | Comfortable cut | Zipped opening | 2 side pockets and 1 zipped chest pocket | Contrasting zippers | Elastic bias at armholes and hem | Tear-Away label



SOL'S
the fair spirit



L03822 | 03822 **Unisex Factor Zipped Fleece Bodywarmer**

100% Polyester
XS, S, M, L, XL, XXL, 3XL, 4XL, 5XL
280 g/m²

SOL'S

BLACK CHARCOAL GREY (SOLID) FOREST GREEN
NAVY ORANGE RED
ROPE ROYAL BLUE

Unisex | Recycled Polyester | Sustainable fabric | Polar fleece 280 | Stretch | Zipped side pockets and main opening with zip pull | Reinforcement band on collar | Elastic bias at armholes and hem | Tear-Away label



CRAGHOPPERS
EXPERT



CEB007 | CEB007 **Expert Corey Fleece Vest**

100% Polyester
XS, S, M, L, XL, XXL, 3XL
205 g/m² Craghoppers Expert

BLACK DARK NAVY

100% recycled Polyester | Lightweight microfleece vest that provides effective core insulation | Full-length front zip | 2 zipped pockets | Approximately 30 bottles were recycled to make this product



BUILD YOUR BRAND



BY182 | BY182 **Ladies' Crinkle Batwing Jacket**

100% Polyamide, Lining: 100% Polyester
XS, S, M, L, XL, XXL, 3XL, 4XL, 5XL
90 g/m² Build Your Brand

BLACK DUSK ROSE

Oversize fit | Stylish crushed fabric | Cut short | With Zipper | Hood with drawstring and toggle | Batwing sleeves | Elastic cuff



TEE JAYS



TJ9602 | 9602 **Club Jacket**

Outer: 90% Polyester / 10% Elastane, Inner: 100% Nylon
XS, S, M, L, XL, XXL, 3XL, 4XL, 5XL
210 g/m² Tee Jays

XS, S, M, L, XL, XXL, 3XL, 4XL, 5XL
BLACK
XS, S, M, L, XL, XXL, 3XL
DARK GREY (SOLID) DEEP GREEN NAVY
RED

Shell: 90% recycled polyester / 10% elastane, Lining: 100% recycled nylon 380T | Functional, lightweight Club Jacket | High quality | Stretchable recycled material | Clean and sporty design | Quality SBS zipper | 2 large front pockets | Inner pocket | Practical rib solution at bottom and sleeve hem | Water-repellent | Adjustable hem with drawstring/stopper



CRAGHOPPERS
EXPERT



CEW004 | CEW004 **Expert Active Jacket**

100% Polyester
XS, S, M, L, XL, XXL, 3XL
176 g/m² Craghoppers Expert

CARBON GREY/BLACK DARK CEDAR GREEN/BLACK
POSEIDON BLUE/DARK NAVY

Waterproof performance | The stretch AquaDry construction incorporates an adjustable grown-on hood | Waterproof two-way centre front zip with inner zip guard and waterproof zipped lower pockets | Waterproof 10,000mm, Breathable 20,000g/m²/24hrs | Approximately 50 bottles were recycled to make this product



CRAGHOPPERS
EXPERT



CEW006 | CEW006 **Expert GORE-TEX® Jacket**

100% Polyester
XS, S, M, L, XL, XXL, 3XL
146 g/m² Craghoppers Expert

BLACK

GORE-TEX® stretch fabric technology ensures this jacket provides reliable waterproof and breathable protection | Adjustable grown-on hood | Stud-fastening stormflap with inner zip guard | 6 pockets | Approximately 40 bottles were recycled to make this product | Once dry tumble dry for 20 mins or more or iron warm to reactivate water repellent treatment



STORMTECH®



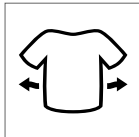
ST124 | TPX-3 **Men's Vortex HD 3-in-1 System Parka**

100% Polyester, 160gsm with 100% Polyester Polar Fleece Zip-Out Liner with Taffeta Lining, 278gsm | Water Resistance 600mm, Breathability 1,000g/m² | Extreme cold: 0°C (32°F) to -20°C (-4°F) | D/W/R Outer Shell | Zip-Out Pile Fleece Liner | Stowable Hood | External Full-Length Stormflap with Snap Closures | Reflective Trim | Zippered Chest Pocket | Cargo Pockets | Internal Zippered Security Pocket

BLACK NAVY

100% Polyester, 160gsm with 100% Polyester Polar Fleece Zip-Out Liner with Taffeta Lining, 278gsm | Water Resistance 600mm, Breathability 1,000g/m² | Extreme cold: 0°C (32°F) to -20°C (-4°F) | D/W/R Outer Shell | Zip-Out Pile Fleece Liner | Stowable Hood | External Full-Length Stormflap with Snap Closures | Reflective Trim | Zippered Chest Pocket | Cargo Pockets | Internal Zippered Security Pocket

SOL'S
the fair spirit



L03827 | 03827 **Men's Falcon Zipped Softshell Jacket**

94% Polyester / 6% Elastane, Inner: 100% Polyester

S, M, L, XL, XXL, 3XL, 4XL

270 g/m²

SOL'S

ABYSS BLUE	BLACK	CHARCOAL GREY (SOLID)	FOREST GREEN
PEPPER RED	ROYAL BLUE		

L03828 | 03828 **Women's Falcon Zipped Softshell Jacket**

94% Polyester / 6% Elastane, Inner: 100% Polyester

S, M, L, XL, XXL, 3XL

270 g/m²

SOL'S

ABYSS BLUE	BLACK	CHARCOAL GREY (SOLID)	FOREST GREEN
PEPPER RED	ROYAL BLUE		

Recycled Polyester / Elastane - 3 layers, Fleece inside: 100% Polyester | Sustainable fabric | Softshell 270 | Comfortable cut | Zipped opening | 2 side pockets and 1 zipped chest pocket | Contrasting zippers | Elastic bias at the cuffs and hem | Tear-Away label

Recycled Polyester / Elastane - 3 layers, Fleece inside: 100% Polyester | Sustainable fabric | Softshell 270 | Comfortable cut | Zipped opening | 2 side pockets and 1 zipped chest pocket | Contrasting zippers | Elastic bias at the cuffs and hem | Tear-Away label



E7860 | 7860 **Men's Warm Softshell Jacket**

Outer: 95% Polyester / 5% Elastane, Inner: 100% Polyester

S, M, L, XL, XXL, 3XL, 4XL, 5XL
440 g/m²

Promodoro

BLACK	CHARCOAL (SOLID)	KHAKI
NAVY	STEEL GRAY	

Bi-elastic softshell bonded fleece | Breathable | Water resistant 8,000 mm | Wind-resistant | Detachable and resizable hood | Waterproof zips | Chin Guard | Napoleon pocket | Sleeve pocket | Adjustable sleeve cuffs with hook and loop fastener | Tunnel drawstring at hem with cord stoppers inside | Extended back section with rounded hem | 2 zipped side pockets | Sewn keyring in side pocket | Reflective piping and zip puller | Dividing seams | Neutral neck label for easy relabeling



E7865 | 7865 **Women's Warm Softshell Jacket**

Outer: 95% Polyester / 5% Elastane, Inner: 100% Polyester

S, M, L, XL, XXL, 3XL
440 g/m²

Promodoro

BLACK	CHARCOAL (SOLID)	KHAKI
NAVY	STEEL GRAY	

Bi-elastic softshell bonded fleece | Breathable | Water resistant 8,000 mm | Wind-resistant | Detachable and resizable hood | Waterproof zips | Chin Guard | Napoleon pocket | Sleeve pocket | Adjustable sleeve cuffs with hook and loop fastener | Tunnel drawstring at hem with cord stoppers inside | Extended back section with rounded hem | 2 zipped side pockets | Sewn keyring in side pocket | Reflective piping and zip puller | Dividing seams | Neutral neck label for easy relabeling



RT900F | R900F **Women's Recycled 3-Layer Printable Softshell Jacket**

100% Polyester
XS, S, M, L, XL, XXL
300 g/m²

Result Genuine Recycled

BLACK	NAVY
-------	------

Outer layer: 100% TOPGREEN® recycled Polyester, Mid-layer: Waterproof 8000mm, Breathable 1000g & windproof TPU membrane, Inner layer: 100% Polyester recycled microfleece | YKK zip with chin guard and removable zip pull | Reflective shoulder trim front & back | Top stitch detail front & back | Zipped chest and front pockets | Shaped body panels and fitted waist | Open cuff and waist | Stand-up collar | Hang loop | Enhanced Water Repellency | TOPGREEN® environmental-friendly materials made from recycled PET-bottles offering a sustainable equivalent to conventional yarns | End of life recyclable | Made out of 18 (1 litre) plastic bottles | PFOA-free



JN1180 | JN1180 **Men's Allweather Jacket**

100% Polyester
S, M, L, XL, XXL, 3XL

James+Nicholson

BLACK	BLACK/CARBON/LIGHT RED
BRIGHT BLUE/NAVY/BRIGHT BLUE	CARBON/BRIGHT YELLOW/CARBON
LIGHT RED/BLACK/LIGHT RED	NAVY

Light, padded outdoor softshell jacket | Outer material: (140 g/m²): 100% recycle polyester, Lining: 100% recycled polyester/ Functional material made of recycled polyester with TPU membrane | Wind- and water-repellent (10,000 mm water column) | Breathable and permeable to water, vapour (5,000 g/m²/24 h) | Taped seams | Waterproof zips | Light mesh lining | 2-way zip covered along full length with chin protection | 2 side pockets, 1 inside pocket | Adjustable hood | Hook-and-loop for width regulation on the sleeves | Ergonomic fit, extended back section | Stylish, reflective details on sleeve and at the back | Zip for decoration at the back | Zips: YKK



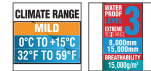
JN1179 | JN1179 **Ladies' Allweather Jacket**

100% Polyester
XS, S, M, L, XL, XXL

James+Nicholson

BLACK	BLACK/CARBON/LIGHT RED
BRIGHT BLUE/NAVY/BRIGHT BLUE	CARBON/BRIGHT YELLOW/CARBON
LIGHT RED/BLACK/LIGHT RED	NAVY

Lightweight, padded outdoor softshell jacket | Slightly fitted | Outer material (140 g/m²): 100% recycle polyester; Lining: 100% recycled polyester/functional material made of recycled polyester with TPU membrane | Wind- and water-repellent (10,000-mm water column) | Breathable and permeable to water, vapour (5,000 g/m²/24 h) | Taped seams | Waterproof zips | Lightweight mesh lining | 2-way zip covered along full length with chin protection | 2 side pockets, 1 inside pocket | Adjustable hood | Hook-and-loop for width adjustment on the sleeves | Ergonomic fit, longer at the back | Stylish, reflective details on sleeve and at the back | Zip for decoration at the back | Zips: YKK



ST123 | KS-3 **Men's Greenwich Lightweight Softshell Jacket**

100% Polyester
S, M, L, XL, XXL, 3XL

Stormtech

BLACK	DOLPHIN
-------	---------

100% Polyester Interlock Bonded with 100% Polyester Bird-eye Mesh, 200 gsm | STORMTECH H2XTREME® Water Resistance 10,000mm, Breathability 3,000g/m² | Mild: +5°C (41°F) to +20°C (68°F) | D/W/R Outer Shell | PFC-Free Waterproof/Breathable Bonded Shell | Windresistant fabric | Reflective Shoulder Trim | Internal Pocket | Audio Port | Lightweight



RG0530 | TRA530

Men's Hooded Fire-down Packaway Baffle Jacket

100% Polyamide
S, M, L, XL, XXL, 3XL

Regatta Professional

BLACK/BLACK GREY MARL/BLACK NAVY/FRENCH BLUE

Polyamide with water repellent and cire finish | Warmloft down-touch performance technology insulation | Packs away into stuff sack | Grown on hood

RG531 | TRA531

Women's Hooded Fire-down Packaway Baffle Jacket

100% Polyamide
36 (10), 38 (12), 40 (14), 42 (16), 44 (18), 46 (20)

Regatta Professional

BLACK/BLACK GREY MARL/BLACK NAVY/FRENCH BLUE

Polyamide with water repellent and cire finish | Warmloft down-touch performance technology insulation | Packs away into stuff sack | Grown on hood



CRAGHOPPERS
EXPERT



CEL005 | CEL005 **Expert Active Hooded Softshell**

94% Polyester / 6% Elastane
S, M, L, XL, XXL, 3XL
320 g/m² Craghoppers Expert

BLACK	CARBON GREY/BLACK
POSEIDON BLUE/DARK NAVY	

The AquaDry Membrane softshell construction with EcoShield PFC-free DWR finish incorporates a honeycomb microfleece back for insulation | Adjustable grown-on hood | 2 zipped pockets | Approximately 50 bottles were recycled to make this product



JAMES & NICHOLSON



JN1844 | JN1844 **Men's Padded Hybrid Jacket**

Outer Fabric: 57% Polyester / 42% Polyamide / 1% Elastane, Outer Fabric 2 + Lining: 93% Polyamide / 7% Elastane, Lining 2: 89% Polyester / 11% Elastane, Padding: 100% Polyester
XS, S, M, L, XL, XXL, 3XL, 4XL, 5XL, 6XL
James+Nicholson

CARBON MELANGE/BLACK	OLIVE MELANGE/BLACK
OLIVE MELANGE/OLIVE	RED MELANGE/BLACK
ROYAL MELANGE/NAVY	

Padded knitted fleece jacket, outer material 300 g/m² | Easy-care combined with elastic inserts | Warming DuPont™ Sorona® padding (renewable material) in the front and rear sections and hood | Padding quilted on the inside | Sleeve with elastic lining for optimum freedom of movement | Attached, adjustable hood | Elastic cuffs at hem and sleeves | Front zip with chin protection | Two side pockets with zip, one inner pocket with zip | Zip for decoration at the back | Zips: YKK



JAMES & NICHOLSON



JN1843 | JN1843 **Ladies' Padded Hybrid Jacket**

Outer Fabric: 57% Polyester / 42% Polyamide / 1% Elastane, Outer Fabric 2 + Lining: 93% Polyamide / 7% Elastane, Lining 2: 89% Polyester / 11% Elastane, Padding: 100% Polyester
XS, S, M, L, XL, XXL, 3XL, 4XL
James+Nicholson

CARBON MELANGE/BLACK	OLIVE MELANGE/BLACK
OLIVE MELANGE/OLIVE	RED MELANGE/BLACK
ROYAL MELANGE/NAVY	

Padded knitted fleece jacket, outer material 300 g/m² | Easy-care knitted fleece with elastic inserts | Slightly fitted | Warming DuPont™ Sorona® padding (renewable material) on the front, back and hood | Quilted padding on the inside | Sleeve with elasticated lining for optimum freedom of movement | Attached, adjustable hood | Elasticated cuffs and hem | Front zip with chin protection | 2 side pockets with zip, 1 inner pocket with zip | Zip for decoration at the back | Zips: YKK



STORMTECH®



ST120 | AFH-1 **Men's Boulder Thermal Shell Jacket**

100% Nylon
S, M, L, XL, XXL, 3XL
Stormtech

BLACK	INDIGO
-------	--------

100% Nylon, 40gsm with Contrast: 97% Polyester, 3% Elastane, 233gsm | Water Resistance 600mm, Breathability 1,000g/m² | Cold: +10°C (50°F) to -10°C (14°F) | D/W/R Outer Shell | PFC-Free Durable Water Repellent Finish | Feather Free Thermal Shell | Articulated Action Shoulders | Internal Full-Length Stormflap | Chin Saver | Zippered Hand Warmer Pockets | Adjustable Hem with Drawcord | Lightweight



STORMTECH®



ST121 | AFP-2 **Men's Stavanger Thermal Jacket**

100% Nylon
S, M, L, XL, XXL, 3XL
Stormtech

BLACK/GRAPHITE	NAVY/GRAPHITE
----------------	---------------

100% Nylon, 40gsm | Water Resistance 600mm, Breathability 1,000g/m² | Cold: +10°C (50°F) to -10°C (14°F) | D/W/R Outer Shell | PFC-Free Water Repellent Finish | Feather Free Thermal Shell | Broken Fiber Polyfill | Packable into Own Pocket | Ergonomic Fit | Full Coverage, Attached Hood | Audio System | Internal Pocket | Elasticized Cuffs | Adjustable Hem



SOL'S
the fair spirit



L03821 | 03821 **Billy Zip Puller (10pcs)**

100% Silicone
One Size
SOL'S

AQUA	BLACK	BOTTLE GREEN
CHARCOAL GREY (SOLID)	FRENCH NAVY	FUCHSIA
GOLD	KELLY GREEN	LIME
ORANGE	RED	ROYAL BLUE

Set of 10 pieces of the same color



BY181 | BY181 **Ladies' Organic Oversized Slit Tee Dress**

100% Cotton
XS, S, M, L, XL, XXL, 3XL, 4XL, 5XL
 180 g/m² Build Your Brand

BLACK **DUSK ROSE** **WHITE**

Organic Cotton | Single jersey | Oversize fit | Round neckline | Slit on right side | Dividing seam at waist | Drop Shoulder



NP500 | EXP50F **Unisex Flannel Shirt**

60% Cotton / 40% Polyester
XS, S, M, L, XL, XXL, 3XL
 200 g/m² Independent

CHARCOAL HEATHER/BLACK **GREY HEATHER/BLACK**
OLIVE/BLACK **RED/BLACK**

Cotton/Polyester blend flannel | Super soft with a durable and substantial feel | Two front pockets with top flap opening | Double layer back yoke | Button closure | Rollup sleeve vents | Tear away neck label



L03820 | 03820 **Men's Docker Pants**

98% Cotton / 2% Elastane
36, 38, 40, 42, 44, 46, 48, 50, 52, 54, 56, 58, 60, 62, 64
 300 g/m² SOL'S

BLACK **DARK GREY (SOLID)** **FOREST GREEN**
NAVY

Modern cut | Stretch twill | Elastic waist with reinforced belt loops | Zipper and metal button | 2 Italian pockets | 2 side patch pockets with flap and press studs | 2 back piping pockets with buttonhole | 1 ticket pocket | Tear-Away label



RY6708 | BN6708 **Men's Balos Swimming Trunks**

100% Polyester
S, M, L, XL, XXL
 100 g/m² Roly Sport

BERMELLION ORANGE 311 **BLACK 02** **LIME PUNCH 235**
NAVY BLUE 55 **RED 60** **ROYAL BLUE 05**

Swimming shorts with two side pockets | Elasticated waistband with adjustable decorative cord and metal eyelets in a contrasting colour | Contrasting decorative side seam | Back pocket with eyelet



BY201 | BY201 **Crew Socks**

80% Cotton / 17% Polyester / 3% Elastane
35-38, 39-42, 43-46, 47-50
 Build Your Brand

BLACK **WHITE**

Elastic ribbed hems, extra high up to the ankle



JHK900 | UNBOXER **Men's Short Boxer Briefs (3 Pack)**

95% Cotton / 5% Elastane (Grey Melange: 85% Cotton / 10% Viscose / 5% Elastane), Waistband: 53% Nylon / 27% Elastane / 20% Polyester
XS, S, M, L, XL, XXL
 160 g/m² JHK

BLACK **GREY MELANGE** **WHITE**

Short boxer | Side seam | Elastic band with JHK logo

JHK
T-SHIRT



JHK901 | UNMIDWAY **Men's Midway Briefs (3 Pack)**

95% Cotton / 5% Elastane (Grey Melange: 85% Cotton / 10% Viscose / 5% Elastane), Waistband: 53% Nylon / 27% Elastane / 20% Polyester

XS, S, M, L, XL, XXL
160 g/m²

JHK

BLACK GREY MELANGE WHITE

Midway briefs | Side seam | Elastic band with JHK logo

JHK
T-SHIRT



JHK902 | UNBRIEFS **Ladies' Briefs (3 Pack)**

95% Cotton / 5% Elastane (Grey Melange: 85% Cotton / 10% Viscose / 5% Elastane), Waistband: 53% Nylon / 27% Elastane / 20% Polyester

XS, S, M, L, XL, XXL
160 g/m²

JHK

BLACK GREY MELANGE WHITE

Side seam | Elastic band with JHK logo

JHK
T-SHIRT



JHK903 | UNTHONG **Ladies' Thong (3 Pack)**

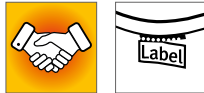
95% Cotton / 5% Elastane (Grey Melange: 85% Cotton / 10% Viscose / 5% Elastane), Waistband: 53% Nylon / 27% Elastane / 20% Polyester

XS, S, M, L, XL, XXL
160 g/m²

JHK

BLACK GREY MELANGE WHITE

Side seam | Elastic band with JHK logo



SFM074 | SF074 **Men's Tartan Lounge Set**

100% Cotton
XS, S, M, L, XL, XXL
115 g/m²

SF Men

RED-NAVY CHECK

Flannel/ Twill Weave | 2pc set | Lounge shirt with notched collar | Grown-on button fastening, pearlised buttons | Topstitched patch pocket on chest | Lounge pants with plain hem and fully elasticated waist | Twin needle hem and self fabric cuffs | Tear-out label



SF074 | SK074 **Women's Tartan Lounge Set**

100% Cotton
XS, S, M, L, XL, XXL
115 g/m²

SF Women

RED-NAVY CHECK

Flannel/ Twill Weave | 2pc set | Lounge shirt with notched collar | Grown-on button fastening, pearlised buttons | Topstitched patch pocket on chest | Lounge pants with plain hem and fully elasticated waist | Twin needle hem and self fabric cuffs | Tear-out label



RY0427 | CA0427 **Men's Imola T-Shirt**

100% Polyester
S, M, L, XL, XXL, 3XL
135 g/m²

Roly Eco

BLACK 02	DARK LEAD 46	FERN GREEN 226	FLUOR CORAL 234
FLUOR GREEN 222	FLUOR ORANGE 223	FLUOR PINK 228	FLUOR YELLOW 221
LIME GREEN 225	MAUVE 63	NAVY BLUE 55	RED 60
ROSETTE 78	ROYAL BLUE 05	TURQUOISE 12	WHITE 01
YELLOW 03			

Functional T-shirt made of 50% recycled polyester/50% polyester, waffle interlock, Control-Dry | Rounded neck with matching concealed seams | Panels on the sleeves | Matching overlock seams on the armholes and on the sleeve inserts | ECO logo on the sleeves (cannot be removed) | Tear-out label in the neckline | Individual packaging made of recycled material



TL710 | TL710 **Unisex Athleisure Hoodie**

60% Cotton / 40% Polyester
XS, S, M, L, XL, XXL
250 g/m²

Tombo

BLACK	HEATHER GREY	OLIVE GREEN
-------	--------------	-------------

Pull over hoodie | Slim fit | Brushed Back Fleece | Three piece hood | Single jersey lined hood | Pouch pocket at front | Ribbed hem and cuffs with elastane | Tear-out label



TL372 | TL372 **Core Pocket Short**

86% Polyester / 14% Elastane
XXS/XS, S/M, L/XL, XXL/3XL
260 g/m²

Tombo

BLACK	DEEP BURGUNDY	HOT CORAL	OLIVE GREEN
TURQUOISE BLUE			

Interlock | High Waisted | No CF seam | Self fabric elasticated waistband | Twin needle stitching at hem | All over stretch | Side seams | Side Pocket | Tear-out label



BY184 | BY184 **Ladies' High Waist Cycle Shorts**

95% Cotton / 5% Elastane
XS, S, M, L, XL, XXL, 3XL, 4XL, 5XL
270 g/m²

Build Your Brand

BLACK

Stretch interlock | Slim fit | High and wide waistband



JustCool
AWDis

JC205 | JC205

Women's Recycled Cool T

100% Polyester
XS, S, M, L, XL, XXL
140 g/m²

Just Cool

ARCTIC WHITE	CHARCOAL (SOLID)	ELECTRIC GREEN	FIRE RED
FRENCH NAVY	JET BLACK	PURPLE	ROYAL BLUE
SAPPHIRE BLUE	SUN YELLOW		

Relaxed fit | Set in sleeve design | AWDIs' own Neoteric™ Recycled fabric with inherent wickability and quick drying properties | Self-fabric taped back neck | Twin needle stitching detail | Self-fabric crew neck | 2 way stretch | UPF 30+ UV protection | Lightweight | Made out of 6 (550ml) plastic bottles

JC201 | JC201

Men's Recycled Cool T

100% Polyester
S, M, L, XL, XXL, 3XL
140 g/m²

Just Cool

ARCTIC WHITE	CHARCOAL (SOLID)	ELECTRIC GREEN	FIRE RED
FRENCH NAVY	JET BLACK	PURPLE	ROYAL BLUE
SAPPHIRE BLUE	SUN YELLOW		

Relaxed sports fit | Set in sleeve design | AWDIs' own Neoteric™ Recycled fabric with inherent wickability and quick drying properties | Self-fabric taped back neck | Twin needle stitching detail | Self-fabric crew neck | 2 way stretch | UPF 30+ UV protection | Lightweight | Made out of 9 (550ml) plastic bottles



CRAGHOPPERS
EXPERT



CEJ009 | CEJ009 **Expert Kiwi Long Short**

65% Polyester / 35% Cotton
30, 32, 34, 36, 38, 40, 42 Inch
170 g/m²

Craghoppers Expert

BLACK | DARK NAVY | PEBBLE

Longer-length (12") workwear shorts | The insect bite-proof weave and EcoShield PFC-free splashproof finish provide added protection | Durable water repellent finish | Approximately 18 bottles were recycled to make this product



CRAGHOPPERS
EXPERT



CEW005R | CEW005R **Expert GORE-TEX® Trouser**

100% Polyester
30, 32, 34, 36, 38, 40, 42 Inch (Regular)
146 g/m²

Craghoppers Expert

BLACK

Outer: 100% Polyester with GORE-TEX Membrane / Lining: 100% Polyester | Recycled Polyester Taffeta Lining | Recycled zip tapes to all but outer lower pockets | 2-layer stretch construction features a stretch mesh and taffeta lining for comfort and protection | Approximately 20 bottles were recycled to make this product | Once dry tumble dry for 20 mins or more or iron warm to reactivate water repellent treatment



SOL'S
the fair spirit



L03819 | 03819 **Women's Jill Legging**

95% Cotton / 5% Elastane
XS, S, M, L, XL, XXL
180 g/m²

SOL'S

DEEP BLACK

Combed Cotton | Jersey 180 | Carbon finishing | Elasticated waist | Stretch | Extra soft | Tear-Away label



TOMBO



TL720 | TL720 **Unisex Athleisure Joggers**

60% Cotton / 40% Polyester
XS, S, M, L, XL, XXL
250 g/m²

Tombo

BLACK | HEATHER GREY | OLIVE GREEN

Slim fit joggers | Brushed Back Fleece | Elasticated self fabric waistband with drawcord | Side seam pockets | Rubberised drawcord ends | Ribbed ankle cuffs | Tear-out label



SOL'S
the fair spirit



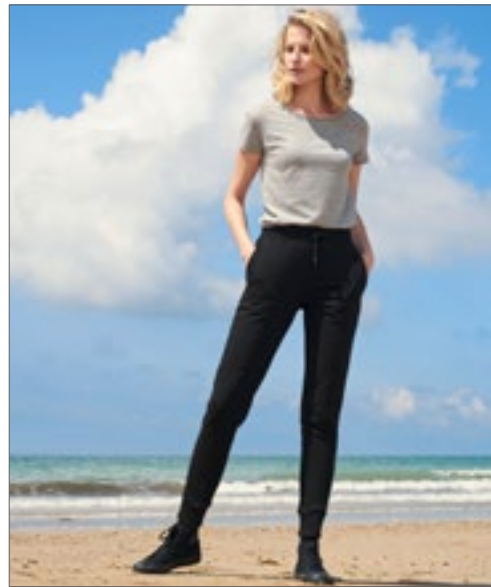
L03810 | 03810 **Unisex Jumbo Fleece Jog Pants**

85% Cotton / 15% Polyester
XS, S, M, L, XL, XXL, 3XL
280 g/m²

SOL'S

BLACK	CHARCOAL MELANGE	FRENCH NAVY	GREY MELANGE
KHAKI	LILAC		

Unisex | Combed organic Cotton / recycled Polyester | Fleece | Modern cut | Slim fit | 2 Italian style pockets | 1 back patch pocket | 2x2 Elastane rib at waist and lower leg | Round drawstring with tone-on-tone tip | Tear-Away label



SOL'S
the fair spirit



L03809 | 03809 **Women's Jet Jog Pants**

85% Cotton / 15% Polyester
XS, S, M, L, XL, XXL
300 g/m²

SOL'S

BLACK	FRENCH NAVY	GREY MELANGE
-------	-------------	--------------

Combed organic Cotton / recycled Polyester | French Terry | Modern cut | Slim fit | 2 Italian style pockets | 1 back patch pocket | 2x2 Elastane rib at waist and lower leg | Round drawstring with tone-on-tone tip | Tear-Away label



SFM430 | SF430 **Unisex Sustainable Fashion Cuffed Joggers**

60% Cotton / 40% Polyester
XXS, XS, S, M, L, XL, XXL, 3XL
260 g/m²

SF Men

BLACK	HEATHER GREY	KHAKI	LIGHT STONE
STONE BLUE			

Unisex regular fit joggers | Regenerated Cotton / Recycled Polyester | Brushed Back Fleece | Elasticated waist and cuffs with round cord draw cord | Curved front side pockets | Back patch pocket | Tonal topstitching | No label | Re-sealable, recyclable bags - made from 100% recycled plastic



SOL'S
the fair spirit



L03808 | 03808 **Men's Jet Jog Pants**

85% Cotton / 15% Polyester
XS, S, M, L, XL, XXL, 3XL
300 g/m²

SOL'S

BLACK	FRENCH NAVY	GREY MELANGE
-------	-------------	--------------

Combed organic Cotton / recycled Polyester | French Terry | Modern cut | Slim fit | 2 Italian style pockets | 1 back patch pocket | 2x2 Elastane rib at waist and lower leg | Round drawstring with tone-on-tone tip | Tear-Away label

SWEATPANTS



JAMES & NICHOLSON



JN8036 | 8036 **Men's Lounge Pants**

85% Cotton / 15% Polyester
S, M, L, XL, XXL, 3XL
300 g/m²

James+Nicholson

GRAPHITE NAVY VANILLA

Combed, ring-spun organic cotton/polyester | High-quality French terry | Attached, elastic waistband with cord | 2 side pockets and one back pocket | 1 cargo pocket with hook and loop on the right leg | Tear off!® - Label



JAMES & NICHOLSON



JN8035 | 8035 **Ladies' Lounge Pants**

85% Cotton / 15% Polyester
XS, S, M, L, XL, XXL
300 g/m²

James+Nicholson

GRAPHITE NAVY VANILLA

Combed, ring-spun organic cotton/polyester | High-quality French terry | Elasticated waistband with drawstring | 2 side pockets and 1 back pocket | Tear off!® - Label



BY174 | BY174 **Organic Basic Sweatpants**

100% Cotton
S, M, L, XL, XXL, 3XL, 4XL, 5XL
300 g/m²

Build Your Brand

BLACK HEATHER GREY

Organic cotton, brushed inside | Regular fit | Elasticated waistband with drawstring | Elasticated ribbed cuffs | Side pockets and one back pocket | Slim leg profile trouser



HRM1500 | 1500 **Unisex Premium Jogging Pants**

70% Cotton / 30% Polyester
XS, S, M, L, XL, XXL, 3XL, 4XL, 5XL, 6XL
285 g/m²

HRM

BLACK DARK GREY GREY MELANGE NAVY

Ring-spun, combed cotton/recycled polyester (brushed inside) | Soft mixed fabric | Anti-pilling and pre-shrunk, colourfast | Contemporary cut | With high-quality, 1x1 ribbed knit hems, pocket openings and ankles | Two side zipped pockets and one back pocket right | High-quality waistband with flat seam, mock front zip | Two large retro-look metal eyelets | Plaited round cord | Label-free



NE74003 | 074003 **Unisex Sweatpants With Elastic Cuff**

100% Cotton
XS, S, M, L, XL, XXL, 3XL
301 g/m²

Neutral

ASH GREY BLACK BORDEAUX DARK HEATHER NAVY RED SPORT GREY

Fairtrade-certified cotton | Combed organic cotton | Fleece with brushed backside | Loose Fit | Side pockets | Rib at waist | Elastic cuff | Flat strings



ROLY



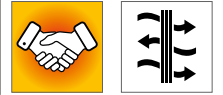
RY1174 | PA1174 **Men's Adelpho Trousers**
 60% Cotton / 40% Polyester (Heather Grey: 85% Polyester / 15% Viscose)
S, M, L, XL, XXL
 280 g/m² Roly

BLACK 02 | HEATHER GREY 58 | NAVY BLUE 55

Long tracksuit bottoms with wide, adjustable waistband with drawstring | Breathable | Not brushed inside | Side pocket | Narrow cuff at the ankles | Tear-out label



ROLY



RY1175 | PA1175 **Women's Adelpho Trousers**
 60% Cotton / 40% Polyester (Heather Grey: 85% Polyester / 15% Viscose)
S, M, L, XL, XXL
 280 g/m² Roly

BLACK 02 | HEATHER GREY 58 | NAVY BLUE 55

Long track pants with wide, adjustable waistband with drawstring | Breathable | Not brushed inside | Side pocket | Fitted cuff on the pant leg | Tear-out label



SFM432 | SF432 **Unisex Sustainable Fashion Sweat Shorts**
 60% Cotton / 40% Polyester
XXS, XS, S, M, L, XL, XXL, 3XL
 260 g/m² SF Men

BLACK | HEATHER GREY

Unisex sweat shorts | Regenerated Cotton / Recycled Polyester | Brushed Back Fleece | Elasticated waist | Round cord draw cord | Curved front side pockets | Back patch pocket | Straight hem with twin-needle stitching | No label | Re-sealable, recyclable bags - made from 100% recycled plastic



SF431 | SK431 **Women's Sustainable Fashion Wide Leg Joggers**
 60% Cotton / 40% Polyester
XS, S, M, L, XL, XXL
 260 g/m² SF Women

BLACK | KHAKI | DUSKY PINK | HEATHER GREY

Regenerated Cotton / Recycled Polyester | Brushed Back Fleece | Elasticated waist with long round cord drawcord | Curved front side pockets | Tonal topstitching detail | No label | Re-sealable, recyclable bags - made from 100% recycled plastic



BU8810 | 8810 **Flannel Jogger Pant**
 60% Cotton / 40% Polyester
S, M, L, XL, XXL, 3XL
 280 g/m² Burnside

BLUE - WHITE (CHECKED) | ECRU - BLACK (CHECKED) | HEATHER CHARCOAL
 HEATHER GREY | RED - BLACK (CHECKED)

Cotton/Polyester CVC fabric | Covered elastic waistband | Side-seam pockets | 1" elastic bottom hem | 1 rear-back patch pocket



seidensticker



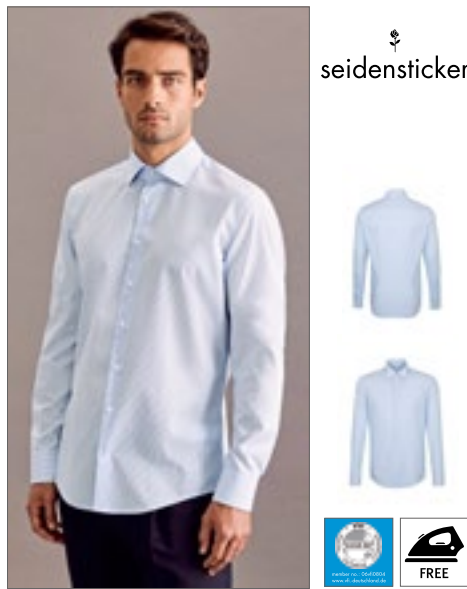
SN193600 | 193640/193660 **Men's Shirt Regular Fit Check/Stripes Long Sleeve**

100% Cotton
38, 39, 40, 41, 42, 43, 44, 45, 46, 47, 48

Seidensticker

CHECK LIGHT BLUE - WHITE STRIPED LIGHT BLUE - WHITE

Poplin | Regular fit | Kent collar | Long sleeve | Width-adjustable cuffs | Non-iron



seidensticker



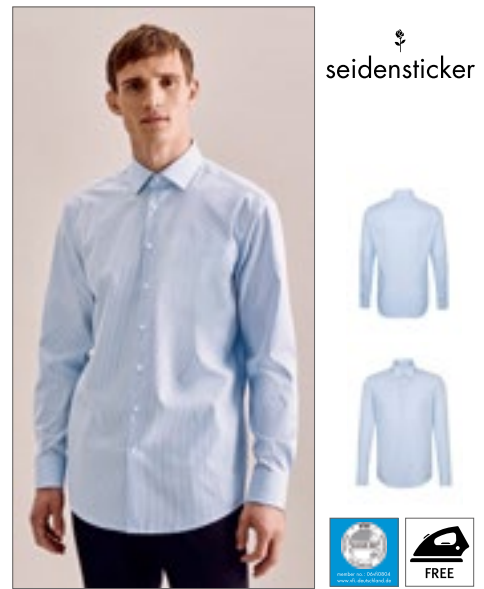
SN293600 | 293640/293660 **Men's Shirt 2 Shaped Fit Check/Stripes Long Sleeve**

100% Cotton
37, 38, 39, 40, 41, 42, 43, 44, 45, 46

Seidensticker

CHECK LIGHT BLUE - WHITE STRIPED LIGHT BLUE - WHITE

Poplin | 2 shaped fit | Business Kent collar | Long sleeve | Width-adjustable cuffs | Non-iron



seidensticker



SN693600 | 693640/693660 **Men's Shirt Slim Fit Check/Stripes Long Sleeve**

100% Cotton
36, 37, 38, 39, 40, 41, 42, 43, 44, 45

Seidensticker

CHECK LIGHT BLUE - WHITE STRIPED LIGHT BLUE - WHITE

Poplin | Slim fit | Business Kent collar | Long sleeve | Width-adjustable cuffs | Non-iron



seidensticker



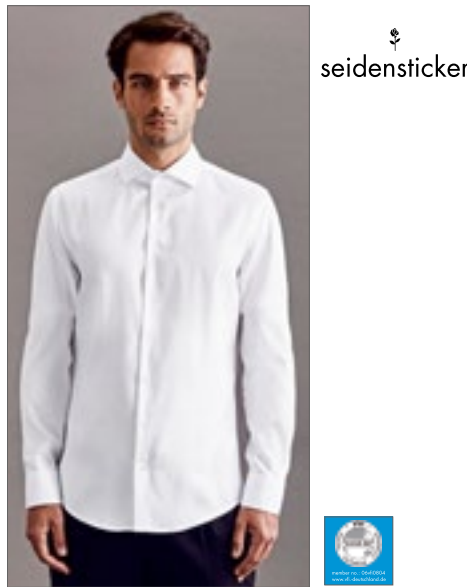
SN193677 | 193677 **Men's Shirt Regular Fit Oxford Longsleeve**

100% Cotton
38, 39, 40, 41, 42, 43, 44, 45, 46, 47, 48

Seidensticker

WHITE

Oxford | Non-iron | Spread Kent collar | Convertable cuff | Regular fit — classic straight cut | Two lateral pleats at the back



seidensticker



SN293677 | 293677 **Men's Shirt Shaped Fit Oxford Longsleeve**

100% Cotton
37, 38, 39, 40, 41, 42, 43, 44, 45, 46

Seidensticker

WHITE

Oxford | Non-iron | Spread Kent collar | Convertable cuff | Tailored fit | Two darts on the back for a flattering fit



seidensticker



SN693677 | 693677 **Men's Shirt Slim Fit Oxford Longsleeve**

100% Cotton
36, 37, 38, 39, 40, 41, 42, 43, 44, 45

Seidensticker

WHITE

Oxford | Non-iron | Kent collar | Convertable cuff | Slim fit | Two darts on the back for a flattering fit



TEE JAYS®



TJ4024 | 4024

Stretch Luxury Shirt

96% Cotton / 4% Elastane

S, M, L, XL, XXL, 3XL

113 g/m²

Tee Jays

BLACK

LIGHT BLUE

WHITE

Fitted men's dress shirt with stretch | Button under collar with completely invisible button placement and two button cuffs | Shaped fit | Fused collar and cuffs | Back yoke | Darts on back | Curved hem



EX239 | 23989 **Blouse-Kasack**

72% Polyester / 23% Viscose / 5% Elastane

XS, S, M, L, XL, XXL, 3XL, 4XL, 5XL

180 g/m²

Exner

BLACK	GRAPHITE	HOT PINK
LIGHT BLUE	NAVY	ROYAL BLUE
WHITE		

Elegant women's tunic blouse | Short stand-up collar with neckline and concealed button panel | Rear box pleat | 2 concealed pockets in the side seam | Super-soft feel and easy to pull on thanks to the stretch fabric | Back length for size M 74 cm



EX299 | 29975 **Unisex Kasack, Soft Touch**

50% Cotton / 50% Polyester

XS, S, M, L, XL, XXL, 3XL, 4XL, 5XL

175 g/m²

Exner

WHITE

Soft-touch | Overlapping V-neck | High cut with 1 concealed press stud | 1 breast pocket, size: approx. 11.5 x 13 cm (width x height) | 2 patch side pockets | Side slit | Back length for size S 71 cm



RY8300 | ZS8300 **Biles Shoes**

36, 37, 38, 39, 40, 41, 42, 43, 44, 45, 46

Roly Footwear

BLACK 02	WHITE 01
----------	----------

100% cotton, canvas | Classic canvas trainers with white rubber soles and coloured stripes | Side vents, rubber toes and lace fastening



VS002 | VS002 **Medical Face Mask Typ II (Pack of 50)**

100% Polypropylene
approx. 175 x 95 mm

Virshields®

BLACK

50 x medical face masks, 3-layer type II | The use of medical masks has always been one of the recommended protective measures in various environments, such as hospitals or clinics, as well as for industrial and other occupational purposes. Today, in view of the pandemic, face masks have become even more important. | These medical single-use masks are made of three protective layers of skin-friendly material and have flexible ear loops | The outer layer protects the user from germs, while the inner layer absorbs moisture, including moisture emitted by the wearer. The filter layer acts as a barrier against germs | Suitable for adults | Manufactured in Europe in accordance with DIN EN 14683:2019. This standard ensures that the production process and test methods are carried out such that these medical masks are able to protect against various disease-causing germs | These type II masks offer a filter performance of BFE ≥98% and their outer layer is hydrophobic, meaning it protects against potentially infectious fluids | The fabric used is tested as fire resistance class 1, which guarantees high fire resistance of the material for you as a customer | The manufacturer complies with quality management system ISO 13485 as well as cleanroom standard ISO-8, which are all relevant for the production of medical products. | CE conformity (93/42/EEC) | Not sterile



VS001K | VS001K **Medical Face Mask Typ I - Kids (Pack of 50)**

100% Polypropylene
approx. 145 x 95 mm

Virshields®

BLUE

Child's medical face mask 3-ply type I in blue | The Virshields Kids medical mask is a class I medical device and consists of three layers of non-woven fabric: one layer of spunbond, one layer of melt-blown fabric, another layer of spunbond | The inner layer is a non-woven fabric that absorbs moisture, including moisture produced by the user. The outer layer is hydrophobic to protect the user from splashes. The filter layer in the middle is the most important part of the medical face mask, as this layer provides a barrier against germs | In addition, the mask includes a full-plastic nose clip (90 mm) and ear loops (3.2 mm elastic) to adapt the mask to the face of the user | Due to the pleated design, the mask can be individually adapted to the wearer's face shape | The medical face mask is classified as type I according to EN 14683:2019+AC:2019 | The Virshields medical mask is a non-sterile medical product for single use only | This product is breathable, reduces the risk of spreading infections, especially in epidemic or pandemic situations, and has been tested with a bacterial filtration rate (BFE) of 95%. EN 14683:2019+AC:2019 TYPE I. | Pack of 50



Dennys
LONDON®

DL201 | DW41-DNM **Denim Two-Tone 3 Pocket Money**
100% Cotton
71 x 102 cm (Width x Length)
280 g/m² Dennys London

BLUE DENIM

Washed two-tone denim waist apron | Heavy-weight fabric | 3 devided secured front pockets, pocket size approx. 18 x 18 cm | Top part is in contrast denim | Long self ties



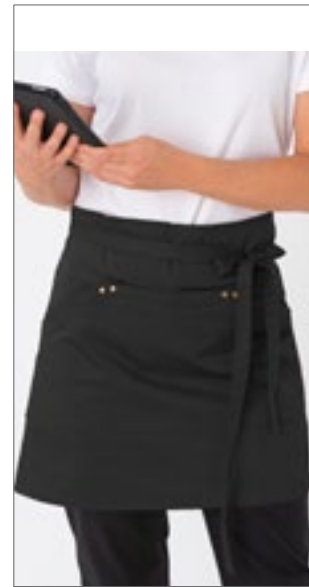
KUSTOM KIT
bargear.



K520 | KK520 **Short Superwash® 60° Bar Apron**
65% Polyester / 35% Cotton
One Size
190 g/m² Bargear

BLACK DARK GREY NAVY
WHITE

Unisex short bar apron | Classic fit | Self-fabric ties at waistband | One open pocket and one zipped pocket | Bargear® woven label | Length (excluding strap): 38 cm, Width: 69 cm, Tie length (each side): 88 cm



Le Chef
PREP



LF115 | DE115 **Utility Waist Apron**
65% Polyester / 35% Cotton
91 x 45 cm (Width x Length) Le Chef Prep

BLACK KHAKI NAVY
OLIVE

3 compartment pocket with 2 pen pockets | With pockets large enough for tablets and PDO's | With oxy brass eyelet and oxy brass rivet details | Reinforced corners | Long self ties



KARLOWSKY®

KARLOWSKY®
PASSION



KY055 | VS 12 **Prebinder Green-Generation**
65% Polyester / 35% Cotton
110 x 65 cm (Width x Length)
215 g/m² Karlowsky

AUBERGINE (CA. P. 5185C) BLACK (CA. P. 419C) CINNAMON (CA. P. 2321C) MOSS GREEN (CA. P. 4229C)
PEBBLE (CA. P. 4268C) STEEL BLUE (CA. P. 2380C)

Modern, comfortable half apron | Polyester content made from recycled plastic | Urban waist ties consisting of real leather and contrasting ties in a natural look | All belts can be easily removed or attached using press studs | Two patch pockets (18 x 20 cm) on the sides | Slit for enhanced range of motion | Colourfast, easy care, sustainable



KARLOWSKY®

KARLOWSKY®
PASSION



KY057 | VS 13 **Waist Apron New-Nature**
65% Polyester / 35% Cotton
90 x 55 cm (Width x Length)
215 g/m² Karlowsky

AUBERGINE (CA. P. 5185C) BLACK (CA. P. 419C) CINNAMON (CA. P. 2321C) MOSS GREEN (CA. P. 4229C)
PEBBLE (CA. P. 4268C) STEEL BLUE (CA. P. 2380C)

Modern and sustainable half apron in natural urban style | Polyester content made from recycled plastic | With innovative side openings for easy access to your own trouser pockets | Waist ties made from contrasting coloured cords | Two loops on the upper waistband for additional support when tying | Contrasting seams on loops and pockets | Colourfast, easy care, sustainable



KARLOWSKY

KARLOWSKY



KY054 | LS 37

Apron Green-Generation

65% Polyester / 35% Cotton

70 x 85 cm (Width x Length)

215 g/m²

Karlowsky

AUBERGINE (CA. P. 5185C)	BLACK (CA. P. 419C)	CINNAMON (CA. P. 2321C)
MOSS GREEN (CA. P. 4229C)	PEBBLE (CA. P. 4268C)	STEEL BLUE (CA. P. 2380C)

Modern, comfortable apron | Polyester content made from recycled plastic | Timeless, modern front design | Urban cross straps made from real leather and contrasting ties in natural look at the back | Both apron straps are positioned over the shoulders to relieve the neck area | All belts can be easily removed or attached using press studs | Practical fastening: The contrasting ties are crossed at the back, pulled through the buckles and tied together (length and height can be adjusted easily) | Stylish angled apron edges | Colourfast, easy care, sustainable



KARLOWSKY

KARLOWSKY



KY056 | LS 40

Apron New-Nature

65% Polyester / 35% Cotton

70 x 85 cm (Width x Length)

215 g/m²

Karlowsky

AUBERGINE (CA. P. 5185C)	BLACK (CA. P. 419C)	CINNAMON (CA. P. 2321C)
MOSS GREEN (CA. P. 4229C)	PEBBLE (CA. P. 4268C)	STEEL BLUE (CA. P. 2380C)

Modern and sustainable pinafore apron in natural urban style | Polyester content made from recycled plastic | Waist and neck ties made from contrasting coloured cords | Fabric reinforcement on the neck tie provides a more comfortable fit in the neck area | Breast pocket for pens or kitchen tweezers | Contrasting seams on the pocket | Colourfast, easy care, sustainable



CG
WORKWEAR



CGW0122 | 00122-44

Bistro Apron Roma 80 GreeNature

65% Polyester / 35% Cotton

80 x 100 cm (Length x Width)

215 g/m²

CG Workwear

BLACK	CHERRY	COOL GREY
GRIFFIN	NAVY	RAVEN

Polyester made from recycled PET bottles/organic cotton | Made in Germany | Double dyed | Reactive dyeing | Backtacked Bands | Colourfast | Reinforced stress points on ties | Safety seam | Wrinkle resistant and easy care | Suitable for industrial laundry and finishing | Washable up to 95°C



CG
WORKWEAR



CGW0131 | 00131-44

Bib Apron Verona 90 GreeNature

65% Polyester / 35% Cotton

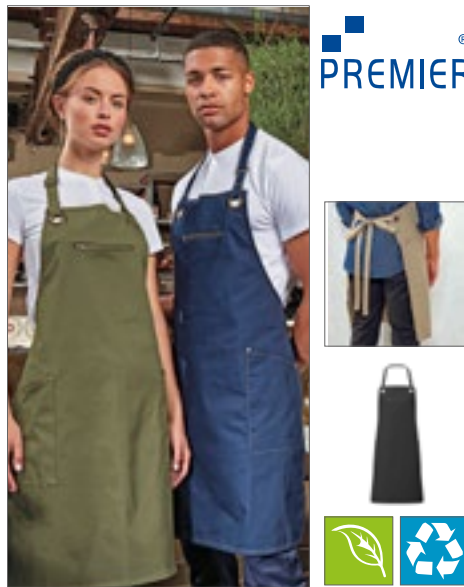
90 x 75 cm (Length x Width)

215 g/m²

CG Workwear

BLACK	CHERRY	COOL GREY
GRIFFIN	NAVY	RAVEN

Polyester made from recycled PET bottles/organic cotton | Indanthrene dyed | Washable up to 95°C | Easycare | Colourfast | Crease-Resistant | Neck-tie is adjustable by slider | Suitable for industrial laundry | Finishing allowed | Made in Germany | Skin friendly



PREMIER



PW121 | PR121

'Barley' Contrast Stitch Sustainable Bib Apron

65% Polyester / 35% Cotton

86 x 72 (Length x Width)

195 g/m²

Premier Workwear

BLACK/CHARCOAL (CA. P. 7540C)	KHAKI (CA. P. 7536C)/BROWN (CA. P. 4975)
NAVY (CA. P. 533C)/CAMEL (CA. P. 2318C)	OLIVE (CA. P. 7763C)/CHESTNUT (CA. P. 7581C)

Recycled Polyester from post-consumer plastic / BCI Cotton | Eco-friendly | Eyelet and rivet detail | Contrast stitching | Slanted side pockets (24 cm depth x 17 cm wide) and centre zipped pocket | Adjustable antique brass buckle on neckband | With 90 cm long ties | Easy Care



PREMIER



PW122 | PR122

'Regenerate' Sustainable Bib Apron

Black Denim: 53% Cotton / 41% Polyester / 6% Viscose, Indigo Denim: 58% Cotton / 36% Polyester / 6% Viscose, Grey Denim: 55% Cotton / 36% Polyester / 9% Viscose, Natural Denim: 44% Cotton / 37% Polyester / 19% Viscose

86 x 72 (Length x Width)

275 g/m²

Premier Workwear

BLACK DENIM (CA. P. 426C)	GREY DENIM (CA. P. COOL GRAY 10C)	INDIGO DENIM (CA. P. 2380C)
NATURAL DENIM (CA. P. 4755C)		

Recycled Cotton from used denim and recycled Polyester from post-consumer plastic | Manufactured in a low carbon powered factory | Eco-friendly | Slanted side pockets (23 cm depth x 17.5 cm wide) with contrast trim | Adjustable knotted neckband | Contrast stitching | Adjustable antique brass buckle on neckband | With 90 cm long ties



CGW03100 | 03100-44 **Men's Chef Jacket Turin GreeNature**
 65% Polyester / 35% Cotton
44, 46, 48, 50, 52, 54, 56, 58, 60, 62, 64
 215 g/m² CG Workwear

BLACK **COOL GREY**

Polyester made from recycled PET bottles/organic cotton | Made in Germany | Press buttons | Chest Pocket | Sleeves can be rolled up and secured with a loop and press button | Vent in the back for mobility | All colours washable up to 95 °C | Easycare | Colourfast | Suitable for industrial laundry and finishing



CGW03105 | 03105-44 **Ladies' Chef Jacket Turin GreeNature**
 65% Polyester / 35% Cotton
34, 36, 38, 40, 42, 44, 46
 215 g/m² CG Workwear

BLACK **COOL GREY**

Polyester made from recycled PET bottles/organic cotton | Made in Germany | Slightly fitted | Press buttons | Chest Pocket | Sleeves can be rolled up and secured with a loop and press button | Vent in the back for mobility | All colours 95°C washable | Easycare | Colourfast | Suitable for industrial laundry and finishing



PW631 | PR631 **Men's Spun-Dyed Sustainable Polo Shirt**
 100% Polyester
S, M, L, XL, XXL, 3XL, 4XL
 160 g/m² Premier Workwear

BLACK **DARK GREY (CA. P. 425C)** **FRENCH NAVY (CA. P. 303C)**

Recycled Polyester from post-consumer plastic | Spun-dyed recycled Polyester yarn | Ribbed collar | Three button placket | Side vents, breathable | Wicking performance | Excellent colour fastness to UV light | Eco-friendly spun-dyeing process for less water consumption and less chemicals and less CO2 emissions



DL900 | DD70 **Unisex Long Sleeve Chef Jacket**
 65% Polyester / 35% Cotton
XXS, XS, S, M, L, XL, XXL, 3XL, 4XL
 180 g/m² Dennys London

BLACK **WHITE**

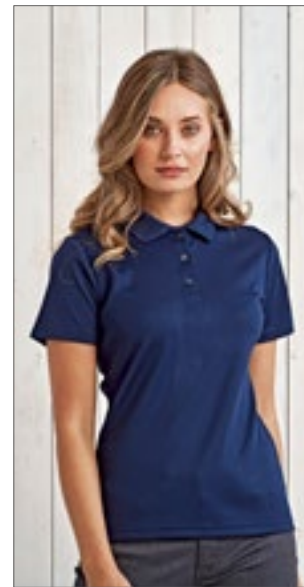
Unisex | Regular fit | Long Sleeves | 10 press studs on a double layer front | Back length 76 cm | Stainless steel snaps | Hanging loop



DL901 | DD70S **Short Sleeve Chef Jacket**
 65% Polyester / 35% Cotton
XXS, XS, S, M, L, XL, XXL, 3XL, 4XL
 180 g/m² Dennys London

BLACK **WHITE**

Unisex | Regular fit | Short Sleeves | 10 press studs on a double layer front | Back length 76 cm | Stainless steel snaps | Hanging loop



PW633 | PR633 **Women's Spun-Dyed Sustainable Polo Shirt**
 100% Polyester
XS, S, M, L, XL, XXL
 160 g/m² Premier Workwear

BLACK **DARK GREY (CA. P. 425C)** **FRENCH NAVY (CA. P. 303C)**

Recycled Polyester from post-consumer plastic | Spun-dyed recycled Polyester yarn | Ribbed collar | Three button placket | Side vents, breathable | Wicking performance | Excellent colour fastness to UV light | Eco-friendly spun-dyeing process for less water consumption and less chemicals and less CO2 emissions



KARLOWSKY SKY



KY051 | JM 35 **Chef Jacket Green-Generation**

Front: 65% Polyester / 35% Cotton, Back: 100% Polyester

46, 48, 50, 52, 54, 56, 58, 60, 62, 64, 66
150

Karlowsky

AUBERGINE (CA. P. 5185C)	BLACK (CA. P. 419C)	MOSS GREEN (CA. P. 4229C)
STEEL BLUE (CA. P. 2380C)	WHITE	

Sustainable chef jacket with short sleeves | Urban style | Recycled Polyester | Slightly tailored cut | Breathable | Moisture wicking | Rear insert made of jersey piqué ensures comfortable ventilation and greater freedom of movement | With press studs | Front with zipped pockets and welt pocket on the left sleeve | Stylish appliqués in the form of contrasting strips on the sleeves and in the neck



KARLOWSKY SKY



KY052 | JM 36 **Short Sleeve Chef Jacket Green-Generation**

Front: 65% Polyester / 35% Cotton, Back: 100% Polyester

46, 48, 50, 52, 54, 56, 58, 60, 62, 64, 66
150 g/m²

Karlowsky

AUBERGINE (CA. P. 5185C)	BLACK (CA. P. 419C)	MOSS GREEN (CA. P. 4229C)
STEEL BLUE (CA. P. 2380C)	WHITE	

Eco-efficient chef jacket with short sleeves | Urban style | Recycled Polyester | Slightly tailored | Breathable | Moisture wicking | Back insert made of jersey piqué ensures comfortable ventilation and increased freedom of movement | With press studs | Front part with zipped pockets and welt pocket on the left sleeve | Stylish applications made of contrasting tapes on the sleeves and in the neck



KARLOWSKY

KARLOWSKY PASSION



KY053 | JF 20 **Ladies' Chef Jacket Jeans-Style**

65% Polyester / 35% Cotton

34, 36, 38, 40, 42, 44, 46, 48, 50, 52, 54, 56, 58

195 g/m² (Vintage Red: 175 g/m²)

Karlowsky

VINTAGE BLACK (CA. P. COOL GREY1C)	VINTAGE BLUE (CA. P. 2108C)	VINTAGE RED (CA. P. 710C)
------------------------------------	-----------------------------	---------------------------

Trendy women's chef jacket in jeans look with slim silhouette | Contrasting coloured seams | Asymmetrically closed, single-row 5-button jacket with press studs | Vented cuffs | Patched sleeve pocket on the left side with practical pen compartment | Suitable for industrial laundering | Highly refined, pre-shrunk, colourfast, easy-care



LeChef PREP



LF112 | DE112 **Unisex Air Jacket**

65% Polyester / 35% Cotton

XS, S, M, L, XL, XXL

200 g/m²

Le Chef Prep

WHITE

Unisex | Regular fit | Moisture-wicking StayCool System (inside collar and sleeves) | Short Raglan Sleeves | Pen Pocket | Concealed snap fastening | Bleach resistant | Back length 80 cm | Do not iron the sleeves



LeChef PROFESSIONAL



LF129 | DF129 **Unisex Asymmetric Jacket**

65% Polyester / 35% Cotton

XS, S, M, L, XL, XXL

160 g/m²

Le Chef

GREY	INDIGO
------	--------

Unisex | Regular fit | StayCool System panel down back and inside collar | With contrast top stitching | Metal rivets | Asymmetric front with zipper | Contrast twin needled seams | Divided pockets with rivets | Chest pocket and sleeve pen pocket | Concealed open ended zip | Back length 78 cm | Hanging loop



Dennys LONDON



DL800 | DC15 **Unisex Chef's Kit Trousers**

65% Polyester / 35% Cotton

XXS, XS, S, M, L, XL, XXL, 3XL, 4XL

180 g/m²

Dennys London

BLACK

Unisex | Standard fit | Fully elasticated trousers | Comfortable and easily adjustable waist fit | Tunnelled elastic waist with drawstring | One hip pocket | Reinforced Patch pocket | Hard wearing | Easy wash | Visible colour tag (placed on the back pocket): XXS - Black Tag, XS - Green Tag, S - Blue Tag, M - Red Tag, L - Orange Tag, XL to 5XL - Black Tag



CGW0180 | 00180-44 **Chef's Hat Fano GreeNature**

65% Polyester / 35% Cotton

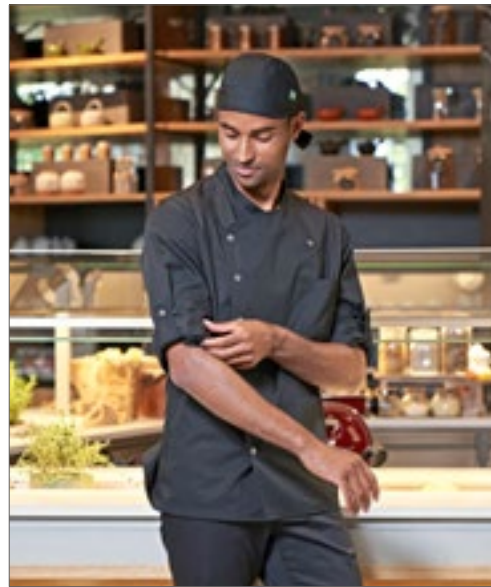
One Size

215 g/m²

CG Workwear

BLACK COOL GREY

Polyester made from recycled PET bottles/organic cotton | Indanthrene dyed | Crease-Resistant | Washable up to 95°C | Easycare | Colourfast | Suitable for industrial laundry | Finishing allowed | Waistband width 3,5 cm | Made in Germany



CGW0185 | 00185-44 **Chef's Hat Prato GreeNature**

65% Polyester / 35% Cotton

One Size

215 g/m²

CG Workwear

BLACK COOL GREY

Polyester made from recycled PET bottles/organic cotton | Made in Germany | Fashionable bandana | Width adjustable with bands | Waistband width 4,5 cm



KY059 | GT 18

Unicoloured dish and cleaning cloth (10 Pack)

100% Cotton

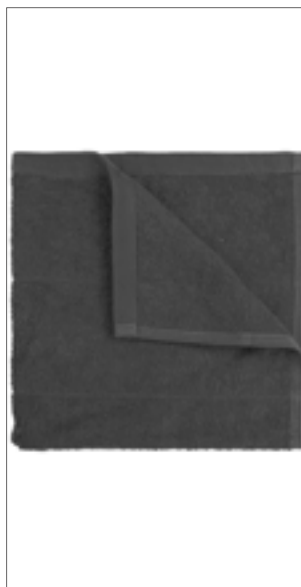
50 x 70 cm

130 g/m²

Karlowsky

ANTHRACITE (CA. P. 7540C) BLACK (CA. P. 419C) RED (CA. P. 186C) WHITE

Plain dishcloth and cleaning cloth made from rugged canvas fabric | Absorbent natural fibre | Colourfast, pre-shrunk | With practical loop for hanging



TH1600 | T1-KTOWEL

Kitchen Towel

100% Cotton

50 x 50 cm

500 g/m²

The One Towelling®

ANTHRACITE BLACK LIME GREEN NAVY BLUE RED ROYAL BLUE TAUPE WHITE

Combed cotton (terry) | High absorption | Washable up to 60°



KY126 | BS 53

Work Shoe Next-Step

Upper material: textile | Inner material: textile | Insole: layer of synthetic foam covered with textile | Outer Sole: synthetic material

35, 36, 37, 38, 39, 40, 41, 42, 43, 44, 45, 46, 47

Karlowsky

BLACK

Lightweight and modern unisex lace-up work shoe with sporty half-shoe look | Certified in accordance with EN ISO 20347:2012, 01-A-E-FO-SRC (without protective toecap) | Washable up to 30 °C | Durable textile upper provides high breathability | Inner textile material with antibacterial lining | Soft, removable sockliner that follows the shape of the foot to provide an optimal fit | With profiled outer sole which is resistant to fuel and oil (FO) and antistatic (A) | Non-slip PU rubber sole with increased slip resistance on ceramic tiles, cleaning agents, steel plates and glycerin (SRC) | Increased energy absorption at heel (E) | With closed heel



JAMES & NICHOLSON



JN1810 | JN1810 **Men's Doubleface Work Jacket -SOLID-**

55% Polyester / 45% Cotton
XS, S, M, L, XL, XXL, 3XL, 4XL, 5XL, 6XL
380 g/m²

James+Nicholson

BLACK	BROWN	CARBON	DARK GREEN
DARK ROYAL	GREY HEATHER	NAVY	OLIVE
RED	ROYAL	WHITE	

Functional jacket with stand-up collar and kangaroo pocket | Comfortable 2-layer material, outside cotton single jersey, inside fleece | Reflecting front zip (without protection function/no PPE) | Kangaroo pocket with concealed zips | Sleeve- and waistbands with elastane | Zips: YKK



JAMES & NICHOLSON



JN1809 | JN1809 **Ladies' Doubleface Work Jacket -SOLID-**

55% Polyester / 45% Cotton
XS, S, M, L, XL, XXL, 3XL, 4XL
380 g/m²

James+Nicholson

BLACK	BROWN	CARBON	DARK GREEN
DARK ROYAL	GREY HEATHER	NAVY	OLIVE
RED	ROYAL	WHITE	

Functional jacket with stand-up collar and kangaroo pocket | Comfortable 2-layer material, outer made of cotton single jersey, inner made of fleece | Reflective front zip (without protection function/no PPE) | Kangaroo pocket with concealed zips | Sleeve- and waistbands with elastane | Zips: YKK | Slightly fitted



HRM
Stylish to impress, made to last



HRM103 | 103 **Men's Organic Heavy Luxury Roundneck Tees**

100% Cotton
XS, S, M, L, XL, XXL, 3XL, 4XL, 5XL, 6XL
195 g/m²

HRM

BLACK	DARK GREY	GREY MELANGE
NAVY	RED	ROYAL BLUE
WHITE		

Ring-spun, combed organic cotton | Modern regular fit | Shoulder-to-shoulder neck tape and side seams reinforced with double stitching | Anti-pilling and pre-shrunk, colourfast | Industrial laundry | Designed and tested for workwear | Label-free



Result
GENUINE RECYCLED



RT510 | R510X **Recycled Action Overall With Zip Front**

100% Polyester
S, M, L, XL, XXL, 3XL
270 g/m²

Result Genuine Recycled

BLACK	BOTTLE GREEN	NAVY
-------	--------------	------

Recycled Polyester Twill | Breathable | Windproof | 2-way YKK zip with outer storm flap | Hip pockets with wide side access | Patch and zip back pockets | Back elasticised waistband | Open cuffs and ankles | Bar tack stress points | Tough & hardwearing | Gusseted back panel | Stud fastened collar | Sleeve pen pocket | Chest zip pocket | Ruler pocket | Hang loop | Unlined | Made from highest quality sustainable yarns using 100% post-consumer PET recycled plastic bottles offering a sustainable equivalent to conventional yarns | End of life recyclable | Made out of 82 (1 litre) plastic bottles



korntex



KX76 | KXRSHIRT **Hi-Vis Recycled T-Shirt Bilbao**

100% Polyester
S, M, L, XL, XXL, 3XL, 4XL, 5XL
160 g/m²

Korntex

SIGNAL ORANGE/BLACK	SIGNAL ORANGE/GREY
SIGNAL YELLOW/BLACK	SIGNAL YELLOW/GREY

100% recycled polyester, Birdseye | EN ISO 20471:2013 | Two reflective strips around the body | Two reflective strips across the shoulder | Fashionable dividing seams | Grey or black neckline | Dash-patterned reflective elements



KX217 | RX217 **Safety Vest With Zipper**

100% Polyester
S, M, L, XL, XXL, 3XL, 4XL, 5XL
120 g/m²

Korntex

SIGNAL ORANGE SIGNAL YELLOW

Basic safety vest with zip | Practical for all environments where conveyor belts are used | EN ISO 20471:2013



KX2170 | KXX217_D **Basic Safety Vest For Print Karlsruhe**

100% Polyester
XL, XXL

Korntex

SIGNAL ORANGE SIGNAL YELLOW

Without outer packaging/ polyester bag | EN ISO 20471:2013/A1:2016 | Two 5 cm wide reflective strips around the body | Size-adjustable with two Velcro fasteners | The manufacturer guarantees the reflective properties in accordance with the EN standard for 25 washes at 40°C | EAN/barcode scannable in the label | Instructions for use in the 24 official languages of the EU for downloading



KX500CO2 | KXEWW **Safety Vest Whale - CO₂ Neutral**

100% Polyester
S, M, L, XL, XXL, 3XL, 4XL, 5XL, 6XL, 7XL
120 g/m²

Korntex

SIGNAL ORANGE SIGNAL YELLOW

High-quality standard safety vest with black seams in Korntex style | Certified according to EN ISO 20471:2013, EN 17353:2020 | Two transverse reflective strips | Size adjustable with two Hook and loop fasteners | The manufacturer guarantees the reflective properties in accordance with the EN standard for 25 washes at 40°C. | Instructions for use in the 24 official languages of the EU | Equipped with EAN barcode | Individually packed in a polyethylene bag | One safety vest generates around 30 kg of CO₂ in its lifecycle. It is not really possible to lower this figure. A native tree (beech) absorbs around 10 kg of CO₂ per year. Therefore, corresponding offsetting countermeasures are necessary. For each vest, a donation is made directly to a CO₂ binding project. Current project: Iplantatree.org in Germany. Transparency: All laboratory values, forecasts, calculations, investments in compensation projects and certifications are published. Break-even in just 7 years! For each box, 43 trees are planted in Germany.



KX143 | KXBW **Hi-Vis Bodywarmer Elbrus**

100% Polyester
S, M, L, XL, XXL, 3XL
180 g/m²

Korntex

SIGNAL ORANGE SIGNAL YELLOW

EN ISO 20471:2013 | Reversible body warmer with dash-pattern reflective strips | TPU-laminated polyester weave with water-repelling function | Top stitching integrated into the design | Concealed breast pocket | 2 side pockets



KX422 | KXZHO **Hi-Vis Zipper Hoody Galway**

100% Polyester
S, M, L, XL, XXL, 3XL
260 g/m²

Korntex

SIGNAL ORANGE SIGNAL YELLOW
SIGNAL YELLOW/NAVY

EN ISO 20471:2013 | Two 5-cm-wide reflective strips around the body | 1 reflective strip across each shoulder and 2 reflective strips on the sleeves | hood with grey drawstring | Cuffs set off in grey and ribbed | Front zip down the centre



WORK-GUARD
by **Result**



RT459 | R459X **Stirling Safety Boot**

36 (3), 37 (4), 38 (5), 39 (6), 40 (6½), 41 (7), 42 (8), 43 (9), 44 (10), 45 (11), 46 (12)

Result WORK-GUARD

BLACK/GREY/ORANGE

Toe cap: Composite, Upper: Nubuck Leather, Midsole: Composite, Sole: Double density PU | CE EN 20345:2011 S3 SRC | Anti-static | Water resistant | Lightweight | Composite midsole for underfoot protection | Padded ankle support (PU Leather outer) | Energy absorption heel | SRC slip resistance | Composite toecap | Mesh lined | Oil resistant | Heel loop



WORK-GUARD
by **Result**



RT460 | R460X **Kane Safety Dealer Boot**

36 (3), 37 (4), 38 (5), 39 (6), 40 (6½), 41 (7), 42 (8), 43 (9), 44 (10), 45 (11), 46 (12)

Result WORK-GUARD

BLACK

Toe cap: Steel, Upper: Leather with elastic side panel, Midsole: Steel, Sole: Double density PU with air cushion | CE EN 20345:2011 S3 SRC | Anti-static | Water resistant | Lightweight | Partially Mesh lined with light padding | Steel midsole for underfoot protection | Energy absorption, air cushion heel | Ventilation side panels | SRC slip resistant | Steel toecap | Oil resistant | Heel pullers



KX159 | HSFS **Fine Knit Gloves Konya**

100% Nylon, Naps: 100% Polyvinyl chloride
7, 8, 9, 10, 11

Korntex

WHITE/BLACK

EN ISO 2140:2020 CAT 1 | For precision work where full feeling is required | Non-slip dots for a secure grip | Gloves: white; Non-slip dots: black | Grammage: 13 gauge



KX160 | HSCUT **Cut-Resistant Gloves Adana**

70% Polyester / 20% Elastane / 10% Stainless Steel
7, 8, 9, 10, 11

Korntex

YELLOW/BLACK

Cut-protection gloves in accordance with EN ISO 21420:2020 + EN 388:2016+A1:2018 Level 4X42E for Cat. II | Nylon fibreglass weave coated with HPPE | Protects against mechanical risks (cutting, abrasions and tearing) | Cut resistance E



E309 | 309 **Kids' Premium-T Organic**

100% Cotton
140, 152, 164
180 g/m²

Promodoro

AZUR BLUE	BLACK	CHARCOAL (SOLID)	FIRE RED
FLAME	FOREST	FRENCH NAVY	KHAKI
LIGHT BLUE	LIME GREEN	STEEL GRAY	WHITE

100% certified organic cotton | Single jersey | Neutral neck label for easy re-labeling



BY186 | BY186 **Kids' Organic Basic Tee**

100% Cotton
110/116, 122/128, 134/140, 146/152, 158/164
180 g/m²

Build Your Brand

BLACK	HEATHER GREY	WHITE
-------	--------------	-------

Organic Cotton | Single jersey | Regular fit | Ribbed round neck



HRM2001 | 2001 **Kids' Organic Luxury Roundneck Tees**

100% Cotton
S (128/7-8), M (134/8-9), L (140/9-10), XL (146/11-12), XXL (152/12-13), 3XL (158/13-14)
160 g/m²

HRM

BLACK	BORDEAUX	DARK GREY
GREY MELANGE	NAVY	RED
ROYAL BLUE	WHITE	

Ring-spun combed organic cotton | Modern regular fit | Shoulder-to-shoulder neck tape and side stitching strengthened with double stitching | Anti-pilling and pre-shrunk, colourfast | Industrial laundry | Label-free



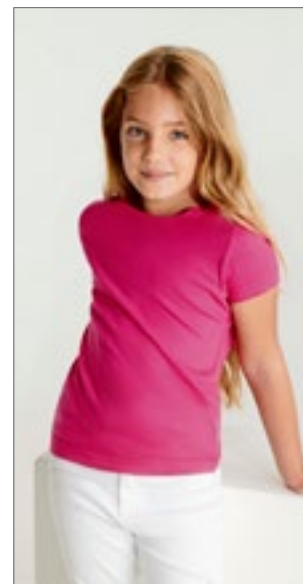
MK01 | MK01 **Kids' Essential T**

100% Cotton
2/3, 4/5, 6/7, 8/9, 10/12, 12+ years
160 g/m²

Mantis Kids

BLACK	HEATHER GREY	NAVY
SOFT PINK	WHITE	

Organic or in Conversion to Organic Cotton, ring-spun & combed | Single Jersey | Unisex Fit | Fine narrow neck rib | Twin needle hem | Tear-off size label | Care label with QR code to follow supply chain and check positive impact of buying organic | Care label made from organic cotton



RY6627K | CA6627 **Kids' Jamaica T-Shirt**

100% Cotton
1/2, 3/4, 5/6, 7/8, 9/10, 11/12 years
155 g/m²

Roly

BLACK 02	LIGHT PINK 48	RED 60
ROSETTE 78	TURQUOISE 12	WHITE 01

Single jersey | Tailored short-sleeved T-shirt | 1 x 1 ribbed-knit rounded neck, double-layered | Reinforced, covered seams on the collar, shoulders and side seams | Tear-out label



BY185 | BY185 **Kids' Organic Basic Hoody**

100% Cotton, Ribbündchen: 65% Polyester / 35% Cotton
 110/116, 122/128, 134/140, 146/152, 158/164
 300 g/m²

Build Your Brand

BLACK	HEATHER GREY	NAVY
WHITE		

Organic cotton, brushed inside | 2x2 rib stitch | Regular fit | Hood without drawstrings | Pouch pocket | Wide ribbed cuffs and hem



BY188 | BY188 **Kids' Organic Basic Zip Hoody**

100% Cotton
 110/116, 122/128, 134/140, 146/152, 158/164
 300 g/m²

Build Your Brand

BLACK	HEATHER GREY	NAVY
WHITE		

Skin- and environment-friendly organic cotton, brushed inside | Regular fit | Zip through fastening | Hood | Side pocket | Wide ribbed cuffs and hem





mantis kids



MK05 | MK05

Kids' Essential Sweatshirt

80% Cotton / 20% Polyester
2/3, 4/5, 6/7, 8/9, 10/12, 12+ years
280 g/m²

Mantis Kids

BLACK	HEATHER GREY	NATURAL
NAVY		

Organic or in Conversion to Organic Cotton, ring-spun & combed / recycled Polyester (rPET) | Brushed Fleece | Set-in sleeves | Rib at collar, cuffs and bottom hem | Selfcolour herringbone back neck tape | Locker patch at back neck | Tear-off size label | Care label with QR code to follow supply chain and check positive impact of buying organic | Care label made from organic cotton



mantis kids



MK04 | MK04

Kids' Essential Hoodie

80% Cotton / 20% Polyester
2/3, 4/5, 6/7, 8/9, 10/12, 12+ years
280 g/m²

Mantis Kids

BLACK	HEATHER GREY	NATURAL
NAVY		

Organic or in Conversion to Organic Cotton, ring-spun & combed / recycled Polyester (rPET) | Brushed Fleece | Unisex fit | Set-in sleeves | Double layered hood | Selfcoloured herringbone back neck tape | Locker patch at back neck | Rib at cuffs and bottom hem | Kangaroo pocket | Tear-off size label | Care label with QR code to follow supply chain and check positive impact of buying organic | Care label made from organic cotton



BY187 | BY187

Kids' Organic Sweat College Jacket

100% Cotton
110/116, 122/128, 134/140, 146/152, 158/164
300 g/m²

Build Your Brand

BLACK/WHITE

Organic cotton, brushed inside | Classic design | Regular fit | Round neckline | Striped neckline | Contrasting sleeves | Side pocket | Striped ribbed cuffs and hem | Full-length press stud panel



HRM
Styled to impress, made to last



HRM2005 | 2005

Kids' Premium Hoody

70% Cotton / 30% Polyester
S (128/7-8), M (134/8-9), L (140/9-10), XL (146/11-12), XXL (152/12-13), 3XL (158/13-14)
320 g/m²

HRM

BLACK	BORDEAUX	DARK GREY
GREY MELANGE	NAVY	RED

Ringspun and combed cotton/recycled polyester (brushed on the inside) | Soft mixed fabric | Anti-pilling and pre-shrunk, colourfast | Seam, pocket edges and cuffs are provided with high-quality 1x1 ribbed knit | All seams are finished with flat decorative stitching | Each with three retro-look metal eyelets | Wide colour-matched cording | Raglan-style sleeves | Label-free



HRM
Styled to impress, made to last



HRM2006 | 2006

Kids' Premium Hooded Jacket

70% Cotton / 30% Polyester
S (128/7-8), M (134/8-9), L (140/9-10), XL (146/11-12), XXL (152/12-13), 3XL (158/13-14)
320 g/m²

HRM

BLACK	BORDEAUX	DARK GREY
GREY MELANGE	NAVY	RED

Ringspun and combed cotton/recycled polyester (brushed on the inside) | Soft mixed fabric | Modern regular fit | Anti-pilling and pre-shrunk, colourfast | Two zipped side pockets and two inside pockets | Seam, pocket edges and cuffs are provided with high-quality 1x1 ribbed knit | All seams are enhanced with flat decorative stitching | Each with three retro-look metal eyelets (stonewashed) | Broad tone-in-tone cord | Label-free



RYOLY



RY5090K | RA5090

Kids' Norway Jacket

100% Polyester
4, 6, 8, 10, 12, 14, 16 years
290 g/m²

Roly

BLACK 02	ELECTRIC BLUE 99	NAVY BLUE 55
----------	------------------	--------------

Outer material: 100% polyester, 300 taffeta; Lining: 100% polyester, 290 taffeta; Padding: 100% polyester, 150 g/m² | Quilted jacket with attached hood lined with soft, feather-light padding | Full-length, concealed zip in matching tone with chin protection | 2 x side zipped pockets | Elastic trim in same colour on cuffs, hem and hood | Lining in contrasting colour | Includes a bag for storing the jacket | Wind- and water-repellent



ROLY

RY6436K | SS6436 **Kids' Nebraska Softshell Jacket**

Outer: 92% Polyester / 8% Elastane, Inner: 100% Polyester
4, 6, 8, 10, 12, 14, 16 years
 300 g/m² Roly

AQUAMARINE 236	BLACK 02	BOTTLE GREEN 56
LIME PUNCH 235	NAVY BLUE 55	RED 60
ROYAL BLUE 05		

Outside: 92% polyester / 8% spandex, inside: 100% polyester extra warm microfleece, 300 g/m² | Softshell jacket, 2-ply | Full tone-on-tone zip with chin guard and puller | Lining made of warm microfleece | Three outer pockets with tone-on-tone zipper | Adjustable cuffs with hook-and-loop fastening | Elastic drawstring with stopper in the hem | Wind- and water-repellent



ROLY

RY5092K | RA5092 **Kids' Oslo Bodywarmer**

100% Polyester
4, 6, 8, 10, 12, 14, 16 years
 290 g/m² Roly

BLACK 02	ELECTRIC BLUE 99	NAVY BLUE 55
----------	------------------	--------------

Outer material: 100% polyester, 300 taffeta, Lining: 100% polyester, 290 taffeta; Padding: 100% polyester, 150 g/m² | Body warmer with soft, feather-light padding | Full-length, concealed zip in matching tone with chin protection | 2 x side zipped pockets | Elastic trim in same colour on hem | Lining in contrasting colour | Includes a bag for storing the jacket | Wind- and water-repellent



SF
MINNI

SM106 | SM106 **Kids' Cropped Top**

93% Cotton / 7% Elastane
5/6, 7/8, 9/10, 11/12 years
 190 g/m² SF Minni

BLACK

Single Jersey | Racer front and back neckline | Twin-needle stitching on hem, neck and armholes | Tear-out label



JustCool
AWDis

JC201K | JC201J **Kids' Recycled Cool T**

100% Polyester
3/4 (XS), 5/6 (S), 7/8 (M), 9/11 (L), 12/13 (XL) years
 140 g/m² Just Cool

ARCTIC WHITE	CHARCOAL (SOLID)	ELECTRIC GREEN
FIRE RED	FRENCH NAVY	JET BLACK
PURPLE	ROYAL BLUE	SAPPHIRE BLUE
SUN YELLOW		

Relaxed fit | Set in sleeve design | AWDIs' own Neoteric™ Recycled fabric with inherent wickability and quick drying properties | Self-fabric taped back neck | Twin needle stitching detail | Self-fabric crew neck | 2 way stretch | UPF 30+ UV protection | Lightweight | Made out of 5 (550ml) plastic bottles



HRM
Styld to impress, made to last

HRM2007 | 2007 **Kids' Premium Jogging Pants**

70% Cotton / 30% Polyester
S (128/7-8), M (134/8-9), L (140/9-10), XL (146/11-12), XXL (152/12-13), 3XL (158/13-14)
 285 g/m² HRM

BLACK	DARK GREY	GREY MELANGE
NAVY		

Ringspun and combed cotton/recycled polyester (brushed on the inside) | Soft mixed fabric | Contemporary cut | Seam, pocket edges and leg cuffs are provided with high-quality 1x1 ribbed knit | Two side zipped pckets and one back pocket right | High-quality waistband with flat seam, mock front zip | Two large antique-look metal eyelets | Plaited round cord | Label-free



SF
MINNI

SM074 | SM074 **Kids' Tartan Lounge Set**

100% Cotton
3/4, 5/6, 7/8, 9/10, 11/12, 13 years
 115 g/m² SF Minni

RED-NAVY CHECK

Flannel/Twill Weave | 2pc set | Lounge shirt with notched collar | Grown-on button fastening, pearlised buttons | Topstitched patch pocket on chest | Lounge pants with plain hem and fully elasticated waist | Twin needle hem and self fabric cuffs | Tear-out label



ATLANTIS
infinite headwear



AT118 | KIFR **Kids' Fraser Cap**

100% Cotton
One Size
270 g/m²

Atlantis

BLACK	COLUMBIA BLUE	KHAKI	NAVY
PINK	RED	ROYAL	

Certified Organic Cotton Twill | Unstructured 6 panels cap | Dad cap shape with mid visor | Full metal buckle and metal hole



Beechfield
ORIGINAL HEADWEAR



CB63NB | B63NB **Junior Organic Cotton 5 Panel Cap**

100% Cotton
One Size

Beechfield

BLACK	NAVY	PISTACHIO	POWDER BLUE
POWDER PINK	WHITE		

100% Organic Cotton Twill | 5 panel design | Structured front panels | Pre-curved peak | Stitched ventilation eyelets | Child safe secure button | Snapback size adjuster | TearAway label



ATLANTIS
infinite headwear



AT119 | KIYA **Kids' Yala Beanie**

100% Cotton
One Size

Atlantis

BLACK	LEAF GREEN	LIGHT AVID
NAVY	PINK	RED
ROYAL		

Certified Organic Cotton Yarn | Anallergic and natural fiber | Fine rib knitted with regular cuff and circular machine finish



Beechfield
ORIGINAL HEADWEAR



CB90NB | B90NB **Junior Organic Cotton Bucket Hat**

100% Cotton, Lining: 85% Polyester / 15% Cotton
S/M (3-6 years), M/L (7-12 years)

Beechfield

NAVY	POWDER BLUE	POWDER PINK
SAND		

100% Organic Cotton Twill, Lining: Polyester Cotton blend | Protection against sunlight - UPF50+ | Unisex styling | Stitched ventilation eyelets | Fully lined | TearAway label



FLEXFIT
BY YUPOONG



FX5003KH | 5003KH **Kids' Flexfit Cotton Twill Bucket Hat**

98% Cotton / 2% Elastane
One Size

FLEXFIT

BLACK	GREY	KHAKI
NAVY	RED	WHITE

Classic collapsible design | Flat brim with decorative seams and edged air holes



BABYBUGZ



BZ60 | BZ60 **Baby Long Sleeve Kimono Bodysuit**

100% Cotton
0/3, 3/6, 6/12 months
200 g/m² Babybugz

BLACK	NAUTICAL NAVY	ORGANIC NATURAL
POWDER PINK	WHITE	

Organic Cotton, ring-spun & combed | Interlock | Wrap-over, kimono style bodysuit | Nickel-free pop fasteners at side for ease of dressing | Nickel-free snap poppers at leg opening | Binding around neck, sleeve ends and leg openings for shape retention | Long raglan sleeves | Tear-off size label | Care label with QR code to follow supply chain and check positive impact of buying organic | Care label made from organic cotton



larkwood
Baby and Toddler Collection



LW651 | LW651 **Organic Cotton Dungaree**

100% Cotton
0/6, 6/12, 12/18, 18/24, 24/36 months
200 g/m² Larkwood

NAVY	SOFT PINK
------	-----------

Organic Cotton | Interlock | Two Button Shoulder Fastening | Central Kangaroo pocket | Rolled & Stitched leg hems | Gusset | Internal poppers around hem | Single jersey front and back fastening | Tag free



larkwood
Baby and Toddler Collection



LW700 | LW700 **Denim Dungarees**

100% Cotton
6/12, 12/18, 18/24, 24/36 months, 3/4, 5/6 years Larkwood

BLUE DENIM

Cotton Denim, Stone Washed | Adjustable straps with YKK poppers | Side seam opening on both sides with YKK poppers | Covered poppers around inseam | Jean style top stitching all over | Two rear patch pockets | Tag free



larkwood
Baby and Toddler Collection



LW074 | LW074 **Tartan All In One**

100% Cotton
6/12, 12/18, 18/24, 24/36 months
115 g/m² Larkwood

RED-NAVY CHECK

Flannel Weave | Babies all in one tartan pyjamas | Self fabric chest patch pocket | 5 button down centre fronts | Internal YKK poppers around inseam | Self fabric cuffs on sleeves and leg hem | Self fabric gusset | Tag free



larkwood
Baby and Toddler Collection



LW850 | LW850 **Kids' Sustainable Joggers**

60% Cotton / 40% Polyester
0/6, 6/12, 12/18, 18/24, 24/36 months, 3/4, 5/6 years
260 g/m² Larkwood

BLACK	HEATHER GREY	LIGHT STONE
NAVY	SOFT PINK	STONE BLUE

Regenerated Cotton, Recycled Polyester | Brush Back Fleece, Peached finish | Self fabric knitted rib at waistband & cuffs | Folded waistband | Gusset panel | Tag free



BABYBUGZ



BZ61 | BZ61 **Baby Made In Africa T**

100% Cotton
3/6, 6/12, 12/18, 18/24 months
150 g/m² Babybugz

BLACK	WHITE
-------	-------

Organic Cotton | Single Jersey | Nickel-free poppers to shoulder opening for easy dressing | Flat, cover-stitch at both sleeve and bottom hem | Top stitch around neck | Tear-off size label | Care label with QR code to follow supply chain and check positive impact of buying organic | Care label made from organic cotton



BABYBUGZ



BZ64 | BZ64

Baby Essential Sweatshirt

80% Cotton / 20% Polyester

6/12, 12/18, 18/24 months

280 g/m²

Babybugz

BLACK	DUSTY BLUE	HEATHER GREY
NATURAL	NAVY	SOFT OLIVE
SOFT PINK		

Organic or in Conversion to Organic Cotton / recycled Polyester (rPET) | Brushed Fleece | Set-in sleeves | Rib at collar, cuffs and bottom hem | Inside self-coloured back neck tape herringbone | Tear-off size label | Care label with QR code to follow supply chain and check positive impact of buying organic | Care label made from organic cotton



larkwood
Baby and Toddler Collection



LW800 | LW800

Kids' Sustainable Sweatshirt

60% Cotton / 40% Polyester

0/6, 6/12, 12/18, 18/24, 24/36 months, 3/4, 5/6 years

260 g/m²

Larkwood

BLACK	HEATHER GREY	LIGHT STONE
NAVY	SOFT PINK	STONE BLUE

Regenerated Cotton, Recycled Polyester | Brush Back Fleece, Peached finish | Self fabric knitted rib at neck and cuffs | Flat lock cross V at CF Neck | Set in or Raglan Sleeve | YKK poppers | Tag free



BABYBUGZ



BZ63 | BZ63

Baby Essential Hoodie

80% Cotton / 20% Polyester

6/12, 12/18, 18/24 months

280 g/m²

Babybugz

BLACK	DUSTY BLUE	HEATHER GREY
NATURAL	NAVY	SOFT OLIVE
SOFT PINK		

Organic or in Conversion to Organic Cotton / recycled Polyester (rPET) | Brushed Fleece | Brushed inner | Double-layer hood | Self-coloured herringbone back neck tape | Inside locker | Rib at cuffs and bottom hem | Tear-off size label | Care label with QR code to follow supply chain and check positive impact of buying organic | Care label made from organic cotton



larkwood
Baby and Toddler Collection



LW750 | LW750

Denim Jacket With Fleece Hood And Sleeves

100% Cotton, Hood + Arms: 70% Cotton / 30% Polyester

6/12, 12/18, 18/24, 24/36 months, 3/4, 5/6 years

280 g/m²

Larkwood

BLUE DENIM

Body: 100% Cotton Denim, Stone Washed; Sleeves/Hood: 71% Cotton / 23% Polyester Brush back fleece | Denim Jacket with CVC Sleeves and hood | 2 piece CVC Hood with Single Jersey lining | YKK Jean Style poppers | Twin chest patch pockets with flaps | Yellow Top stitching details | Knitted rib on cuffs and sleeve | Forward Shoulder seams | Front and back yoke | Stand collar | Tag free



ARTG



AR894 | 894.5

Babiezz® ALL-Over Sublimation Baby Bib

Outer: 100% Polyester, Inner: 100% Cotton
43 x 27 cm

A&R

WHITE/ANTHRACITE GREY	WHITE/AQUA BLUE	
WHITE/BLACK	WHITE/FIRE RED	
WHITE/FRENCH NAVY	WHITE/LIGHT BLUE	
WHITE/LIGHT PINK	WHITE/LIME GREEN	
WHITE/PINK	WHITE/WHITE	

Made of polyester on the frontside and super soft cotton on the backside | Frontside can be fully printed with sublimation designs | Closure with hook and loopfastener



BABYBUGZ



BZ62 | BZ62

Baby Hat

100% Cotton

One Size

200 g/m²

Babybugz

BLACK	DUSTY BLUE	HEATHER GREY
NAUTICAL NAVY	POWDER PINK	WHITE

Organic or in Conversion to Organic Cotton, ring-spun & combed | Interlock | Wide self-bound band for comfort | Tear-off size label | Care label with QR code to follow supply chain and check positive impact of buying organic | Care label made from organic cotton



BY202 | BY202 **Oversized Canvas Bag**
100% Cotton
45 x 45 cm

Build Your Brand

BLACK OFF WHITE SOFT LILAC

Made from rugged canvas | Plenty of storage space



Tiger
Cotton®

NET90014 | T90014 **Tiger Cotton Shopping Bag With Long Handles**

100% Cotton

One Size
120 g/m²

Tiger Cotton by Neutral

BLACK NATURE

Fairtrade Cotton in Conversion | Combed Cotton | Fine canvas weave | Long handles



WM901 | W901 **Recycled Cotton Bag**

100% Cotton
38 x 42 cm
170 g/m²



Westford Mill

BLACK NATURE

Made from 100% pre-consumer recycled Cotton | Can be carried by hand or over the shoulder | Capacity: 10 litres | Delivery without decoration/content



WM961 | W961 **Revive Recycled Bag**

60% Cotton / 40% Polyester
38 x 42 cm
270 g/m²

Westford Mill

BLACK NATURE

Made from a blend of pre-consumer recycled Cotton and postconsumer recycled Polyester | Recycled Polyester made from 100% rPET, equivalent to approx. 2.5 post-consumer bottles | Handle length: 67 cm | Capacity: 10 litres | Delivery without decoration/content



WM925 | W925 **Recycled Cotton Maxi Bag**

100% Cotton
35 x 39 x 13,5 cm
170 g/m²

Westford Mill

BLACK NATURE

Made from 100% pre-consumer recycled Cotton | Large capacity (18 litres) | Can be carried by hand or over the shoulder | Handle length: 58 cm | Delivery without decoration/content



WM696 | W696 **Oversized Canvas Bag**

100% Cotton
56 x 41 x 16 cm
475 g/m²

Westford Mill

BLACK FRENCH NAVY GRAPHITE GREY NATURE

Cotton Canvas | Durable canvas construction | Extra large capacity | Soft webbing handles | Can be carried by hand or over the shoulder | Handle length: 61 cm | Capacity: 37 litres | Delivery without decoration/content





LB03829 | 03829

Awake Recycled Shopping Bag

70% Cotton / 30% Polyester

One Size

145 g/m²

SOL'S Bags

BLACK	FRENCH NAVY	GREY MELANGE
HEATHER BLUE	HEATHER PINK	KHAKI
NATURAL		

Recycled Cotton / recycled Polyester, 100% recycled thread | Canvas 145 | Handle length: 55 cm | Capacity: 10 L | Tear-Away label | Delivery without decoration/content



WM965 | W965

Revive Recycled Maxi Bag

60% Cotton / 40% Polyester
35 x 39 x 13,5 cm
270 g/m²

Westford Mill

BLACK NATURAL

Made from a blend of pre-consumer recycled Cotton and postconsumer recycled Polyester | Recycled Polyester made from 100% rPET, equivalent to approx. 3.5 post-consumer bottles | Large capacity (18 litres) | Handle length: 58 cm | Delivery without decoration/content



HALFAR
Starke Taschen.



HF8019 | 1818019 **Shopper Daily**

rPET
40 x 43 x 16 cm

Halfar

ANTHRACITE	BLACK	GREEN
NAVY	RED	

Large shopper | rPET upper material | Main compartment with hanging zip organizer | With two handles and decorative buckle | Contents/decorations not included



HALFAR
Starke Taschen.



HF8017 | 1818017 **Cooling Shopper Daily**

rPET
33 x 40 x 15 cm

Halfar

ANTHRACITE	BLACK	GREEN
NAVY	RED	

Large cool bag | rPET upper material | Zipped main compartment with high-quality, washable padding inside | Large zipped front pocket | Handle with decorative buckle | Contents/decorations not included



HALFAR
Starke Taschen.



HF8030 | 1818030 **Cooling Shopper Softbasket**

Polyester
41 x 25 x 23 cm

Halfar

BLACK	NAVY	PETROL
RED		

Polyester 600D | Innovative, flexible cooler basket | Large main compartment with 2-way zip | Can be enlarged using side button flaps | Zipped front pocket | Inside washable | Carrier system with two handles and padded grip cuff for the best possible carrying comfort | Foldable | Contents/decorations not included



Westford Mill



WM690 | W690 **EarthAware® Organic Boat Bag**

100% Cotton
36 x 36 x 16 cm
340 g/m²

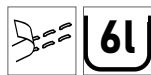
Westford Mill

NATURAL/AMBER	NATURAL/CLASSIC RED
NATURAL/FRENCH NAVY	NATURAL/SAGE GREEN

Organic Cotton Canvas | Premium heavyweight fabric | Soft cotton striped webbing handles | Can be carried by hand or over the shoulder | Handle length: 56 cm | Capacity: 19 litres | Delivery without decoration/content



HALFAR
Starke Taschen.



HF8027 | 1818027 **Drybag Safe 6 L**

Polyester
30 x 40 cm

Halfar

BLACK	NAVY	RED
SILVER		

Polyester 210D Ripstop | Lightweight pack bag to protect against dirt, dust and moisture | Main compartment with wrap-around closure and welded seams | Contents/decorations not included



HALFAR
Starke Taschen.



HF8028 | 1818028 **Drybag Safe 1,4 L**

Polyester
22 x 25 cm

Halfar

BLACK	NAVY	RED
SILVER		

Polyester 210D Ripstop | Light pack bag to protect against soiling, dust and moisture | Main compartment with wrap-around closure and welded seams | Contents/decorations not included



WM966 | W966 **Revive Recycled Stuff Bag**

60% Cotton / 40% Polyester
S (25 x 30 cm), M (35 x 43 cm), L (47 x 54 cm), XL (50 x 68 cm)
 270 g/m²

Westford Mill

BLACK **NATURAL**

Made from a blend of pre-consumer recycled Cotton and postconsumer recycled Polyester | S size is equivalent to approx. 1 post-consumer bottle, M size is equivalent to approx. 2 post-consumer bottles, L size is equivalent to approx. 3 post-consumer bottles, XL size is equivalent to approx. 4 post-consumer bottles | Recycled Cotton/Polyester blend drawcords | Rope drawcord closure | Capacity: S - 3 litres, M - 9 litres, L - 17 litres, XL - 32 litres | Delivery without decoration/content



WM915 | W915 **Recycled Cotton Stuff Bag**

100% Cotton
XXS (10 x 15 cm), XS (14 x 20 cm), S (25 x 30 cm), M (30 x 45 cm), L (40 x 50 cm), XL (49 x 75 cm)
 170 g/m²

Westford Mill

BLACK **NATURAL**

Made from 100% pre-consumer recycled Cotton | Recycled Cotton drawcords | Capacity: XXS - 0.25 litres, XS - 1 litres, S - 3 litres, M - 8 litres, L - 14 litres, XL - 38 litres | Delivery without decoration/content



WM574 | W574 **Canvas Storage Tub**

100% Cotton
S (23 x 20 cm), M (28 x 24 cm), L (38 x 30 cm)
 407 g/m²

Westford Mill

LIGHT GREY **NATURAL** **PASTEL PINK** **SAGE GREEN**

Cotton Canvas | Premium heavyweight fabric | Multi-purpose use | Reinforced built-in handles | Diameter: S - 23 cm (6 litres), M - 28 cm (13 litres), L - 38 cm (28 litres) | Delivery without decoration/content



HF8029 | 1818029 **Organizer XL ModernClassic**

PES Felt
50 x 27 x 16 cm

Halfar

ANTHRACITE

Recycled PES felt | Extensively equipped organiser | Large main compartment with 2-way zip | Flat insert pocket, large zipped insert pocket, two attachment loops e.g. for drinks bottles, business card pocket, 3 insert pockets on the inside | Three insert pockets on the outside | Length-adjustable carrying straps | Fastening tab e.g. for car belt | Contents/decorations not included



HF8011 | 1818011 **Bicycle Bag Cycle**

Polyester
29 x 36 x 14 cm

Halfar

GREY MELANGE

Polyester 600D | Urban cycle bag with spacious main compartment | Large zipped inside pocket | Roll-top closure | Welded seams for reliable protection against rain and wet | Base and edge protection | Individually adjustable holder for fixing to cycle bags with twist lock for securing, hook-and-loop flap on the rear lower section for additional securing (klickfix® holder system) | Decorative reflective appliqué | Handle | Compatible with laptop inlay | Vegan | Contents/decorations not included



HF8012 | 1818012 **Bicycle Handlebar Bag Cycle**

Polyester
30 x 16 x 16 cm

Halfar

GREY MELANGE

Polyester 600D | Main compartment with roll-top fastening on both sides for quick access | Front with elasticated band for stowing e.g. jacket, pullover etc. | Zipper front pouch | Welded seams for reliable protection against rain and wet | Mechanism for attaching a reflector or cycle light | Belt loops for attaching to cycle handlebars | PVC free | Contents/decorations not included



HF8013 | 1818013 **Bicycle Frame Bag Cycle**

Polyester
19 x 10,5 x 8 cm

Halfar

GREY MELANGE

Polyester 600D | Main compartment with adjustable mobile phone compartment and transparent protective film for operating the touchscreen | Water-repellent zipper | Welded seams for reliable protection against rain and wet | Assembly using individually adjustable, strong hook-and-loop fasteners, can be removed individually if necessary | Padded base | PVC free | Contents/decorations not included



BG278 | BG278 **Recycled Essentials Holdall**

100% Polyester
55 x 28 x 25 cm

BagBase

BLACK | BLUSH PINK | NAVY | PURE GREY

100% Recycled 600D Polyester | Recycled Polyester made from 100% rPET, equivalent to approx. 14 post-consumer bottles | PVC Free | Unisex design | Internal zippered pocket | Shoe compartment/wet pocket | External slip pocket | Adjustable carry handles | Can be carried by hand or over the shoulder | TearAway label | Capacity: 35 litres | Delivery without decoration/content



WM816 | W816 **EarthAware® Organic Yoga Mat Bag**

100% Cotton
19 x 69 cm
 340 g/m² Westford Mill



Organic Cotton Canvas | Premium heavyweight fabric | Concealed zippered valuables pocket | Rope drawcord closure | Adjustable webbing shoulder strap | Fits most yoga mat sizes | Capacity: 16 litres | Delivery without decoration/content



WM818 | W818 **EarthAware® Organic Yoga Bag**

100% Cotton
50 x 36 x 13 cm
 340 g/m² Westford Mill



Organic Cotton Canvas | Premium heavyweight fabric | External sleeve for easy access yoga mat storage | Can be carried by hand or over the shoulder | Fits most yoga mat sizes (Yoga mat not included) | Handle length: 57 cm | Capacity: 27 litres | Delivery without decoration/content





HALFAR
Starke Taschen.



HF8022 | 1818022 **Belt Bag Daily**

rPET
29 x 12 x 8 cm

Halfar



Lightweight sling bag | rPET upper material | Zipped main compartment | Zipped compartment at the back | Length-adjustable, side-fastening waist strap with elastic flap | Contents/decorations not included



BagBase



BG277 | BG277 **Recycled Essentials Wash Bag**

100% Polyester
24 x 17 x 9 cm

BagBase



100% Recycled 600D Polyester | Recycled Polyester made from 100% rPET, equivalent to approx. 4 post-consumer bottles | PVC Free | Unisex design | Zippered main compartment | Internal pockets | Wipe clean interior | Multi-purpose use | Grab handle | TearAway label | Capacity: 3 litres | Delivery without decoration/content



HALFAR
Starke Taschen.



HF6500 | 1816500 **Zip Bag Circle**

rPET
26 x 18 x 14 cm

Halfar



Zippered pocket with robust metal-framed opening for standing up or hanging | rPET upper material, 300D | Large, padded main compartment with various organising features | Zipper front pouch | Handle | PVC-free | Contents/decorations not included



HALFAR
Starke Taschen.



HF8021 | 1818021 **Zipper Bag Daily**

rPET
22 x 12 x 10 cm

Halfar



Practical, versatile square zipped pocket | rPET upper material | Large main compartment with 2-way zip | Internal mesh compartment | Side handle flaps for easy opening | Handle | Contents/decorations not included



BagBase®



BG760 | BG760 **Boutique Weekender**
100% Polyurethane
53 x 26 x 24 cm

BagBase

BLACK	OYSTER	SOFT GREY
-------	--------	-----------

100% Leather-Look PU | Saffiano fine grain | Extra long main compartment zip for easy access | Zippered internal valuables pocket | Soft-touch lining | Internal baseboard | Protective base feet | High shine gold metal zip | Self-fabric carry handles | Can be carried by hand or over the shoulder | Compatible with BG765 Boutique Adjustable Bag Strap | Detachable adjustable high density webbing shoulder strap | TearAway label | Handle length: 57 cm | Capacity: 25 litres | Delivery without decoration/content



BagBase®



BG758 | BG758 **Boutique Cross Body Bag**

100% Polyurethane
21 x 13 x 7 cm

BagBase

BLACK	OYSTER	SOFT GREY
-------	--------	-----------

100% Leather-Look PU | Saffiano fine grain | Zippered main compartment | Zippered internal valuables pocket | Soft-touch lining | High shine gold metal zip | Compatible with BG765 Boutique Adjustable Bag Strap | Detachable adjustable shoulder strap | TearAway label | Strap length: 116 cm | Capacity: 1.5 litres | Delivery without decoration/content



BagBase®

BG765 | BG765 **Boutique Adjustable Bag Strap**

100% Polyester
127 x 5 cm

BagBase

BLACK/MUSTARD	BLACK/WHITE
LIGHT GREY/WHITE	NAVY/RED
OYSTER/BLACK	

100% Polyester Webbing | High density webbing | High shine gold metal trims | Compatible with BG758 Boutique Cross Body Bag | Compatible with BG760 Boutique Weekender | Designed for decoration



BagBase®

BG744 | BG744 **Boutique Key Clip**

100% Polyurethane
3,5 x 9 cm

BagBase

BLACK	BLACK/BLACK
NAVY	SOFT GREY
SOFT PINK	SOFT WHITE
TAN	

100% Leather-Look PU | Saffiano fine grain | High shine metal key clip | Can be used as a keyring or bag charm | Designed for decoration



BagBase®

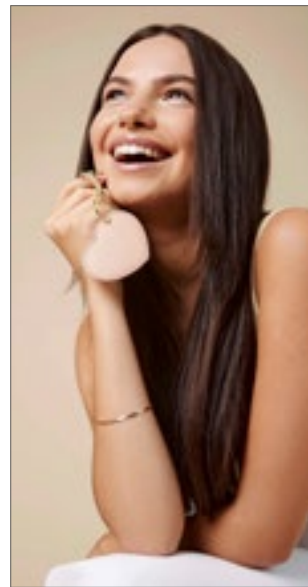
BG745 | BG745 **Boutique Circular Key Clip**

100% Polyurethane
Ø 7 cm

BagBase

BLACK	LILAC	MUSTARD
OYSTER	SAGE GREEN	SOFT BLUE
SOFT GREY	SOFT PINK	SOFT WHITE

100% Leather-Look PU | Saffiano fine grain | High shine metal key clip | Can be used as a keyring or bag charm | Designed for decoration



BagBase®

BG746 | BG746 **Boutique Heart Key Clip**

100% Polyurethane
7 x 6 cm

BagBase

BLACK	CORAL	ROSE GOLD
SOFT PINK	SOFT WHITE	

100% Leather-Look PU | Saffiano fine grain | High shine metal key clip | Can be used as a keyring or bag charm | Designed for decoration



BagBase®

BG768 | BG768 **Boutique Backpack**
 100% Polyurethane
 30 x 41 x 11 cm
 BagBase

BLACK OYSTER SOFT GREY

100% Leather-Look PU | Saffiano fine grain | Zippered main compartment | Internal organisation pocket | Internal water bottle holder | Discreet zippered back panel pocket | Zippered internal valuables pocket | Padded laptop compartment compatible up to 14" | Soft-touch lining | High shine gold metal zips | Wheeled luggage handle strap | Self-fabric adjustable shoulder straps | Grab handle | TearAway label | Capacity: 10 litres | Delivery without decoration/content



Westford Mill

WM910 | WM910 **Recycled Cotton Gymsac**
 100% Cotton
 37 x 46 cm
 170 g/m²
 Westford Mill

BLACK NATURAL

Made from 100% pre-consumer recycled Cotton | Recycled Cotton drawcords | Capacity: 12 litres | Delivery without decoration/content



Westford Mill

WM960 | WM960 **Revive Recycled Gymsac**
 60% Cotton / 40% Polyester
 37 x 46 cm
 270 g/m²
 Westford Mill

BLACK NATURAL

Made from a blend of pre-consumer recycled Cotton and postconsumer recycled Polyester | Recycled Polyester made from 100% rPET, equivalent to approx. 2.5 post-consumer bottles | Recycled Cotton/Polyester blend drawcords | Capacity: 12 litres | Delivery without decoration/content



BagBase®

BG841 | BG841 **MOLLE Utility Sublimation Patch**
 100% Polyester
 10 x 6,5 cm
 BagBase

WHITE

HD Polyester Microfibre | Full Rip-Strip™ reverse for any secure attachment | HD sublimation image surface | Press optimised for sublimation | Designed for decoration | Compatible with all BagBase® MOLLE styles | Compatible with all Beechfield® removable patch styles



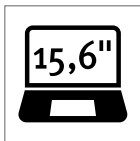
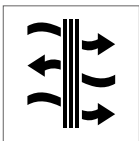
BagBase®

BG850 | BG850 **MOLLE Tactical 35L Backpack**
 100% Polyester
 31 x 48 x 24 cm
 BagBase

BLACK COMBAT CAMO

600D Polyester, Lining: 210D Polyester | MOLLE webbing loop detail | Large main compartment | Padded laptop compartment, compatible up to 17" | Full Rip-Strip™ front pocket for optimal decoration | Three large zippered front pockets | Dual tight-knit stretch mesh bottle pockets - capable of holding 750ml bottle shakers | Internal mesh pockets | Padded back panel | Large top carry handle | Compression straps | Ergonomically designed straps for everyday comfort | Fully adjustable chest strap | Compatible with Rip-Strip™ patches BG840 and BG841 | Compatible with Modulir™ Multipockets BG241 and BG242 | TearAway label | Capacity: 35 litres | Delivery without decoration/content

QUADRA®



QD924 | QD924

Project Recycled Security Backpack Lite

100% Polyester
30 x 45 x 17 cm

Quadra

BLACK	GREY	PEBBLE
PURE GREY	SLATE BLUE	

Recycled 600D Polyester made from 100% rPET, equivalent to approx. 7 post-consumer bottles | Hidden access main compartment | Two external bottle pockets | Multiple internal pockets | Padded laptop compartment, compatible up to 15.6" | Discreet zippered back panel pocket with RFID blocking lining | Pull out ,anti-grab' security lanyard | Lockable zip pullers | Ergonomic breathable padded mesh back panel | Fully adjustable chest strap | Padded grab handle | Durable water repellent treatment for increased weather protection | PVC Free | TearAway label | Capacity: 17 litres | Delivery without content / decoration



WM880 | W880 **EarthAware® Organic Rucksack**

100% Cotton
26 x 38 x 14 cm
340 g/m²

Westford Mill



Organic Cotton Canvas | Premium heavyweight fabric | Fold over flap with secure press stud | Rope drawcord closure | Self-fabric adjustable shoulder straps | Grab handle | Capacity: 10 litres | Delivery without decoration/content



WM881 | W881 **EarthAware® Organic Mini Rucksack**

100% Cotton
22 x 30 x 12 cm
340 g/m²

Westford Mill



Organic Cotton Canvas | Premium heavyweight fabric | Fold over flap with secure press stud | Rope drawcord closure | Self-fabric adjustable shoulder straps | Grab handle | Capacity: 5 litres | Delivery without decoration/content



HF8025 | 1818025 **Rucksack Outdoor**

rPET
31 x 53 x 20 cm

Halfar



rPET 150D/600D Ripstop | Lightweight, functional rucksack with ergonomically shaped back and innovative honeycomb system for optimal ventilation and padding, adjustable at the top and bottom for a perfect fit | Height-adjustable chest strap | Padded lap strap with zipper pockets | Large compartment with two-way zip and flat insert pocket on the inside | Back opening suitable for headphones or tube for the optional drinking system (item HF2216) | Hook and loop fastening for drinking tube | 2 zipped front pockets | 2 mesh side pockets | Lateral lashing straps | Molle band on the front pocket | Decorative reflective print | Hiking sticks fixing | Base compartment with rain cover | Handle | Contents/decorations not included



HF8026 | 1818026 **Daybag Outdoor**

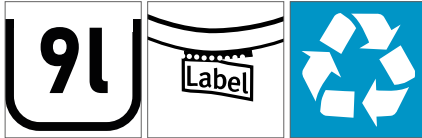
rPET
27 x 48 x 12 cm

Halfar



rPET 150D/600D Ripstop | Light, functional day pack and bike rucksack with innovative honeycomb back design for optimal ventilation and padding | Height-adjustable chest strap | Waist strap with side padding | Large compartment with two-way zip and flat insert pocket on the inside | Back opening suitable for headphones or tube for the additionally available drinking system (Article HF2216) | Hook and loop fastening for drinking tube | 2 zipped front pouches | 2 mesh side pockets | Lateral lashing straps | Molleband on the front pocket | Decorative reflective print, handle | Contents/decorations not included

BagBase®



BG118S | BG118S **Recycled Mini Twin Handle Roll-Top Backpack**

100% Polyester
23 x 32 x 11 cm

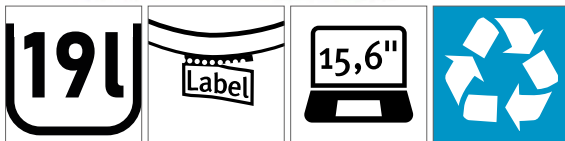
BagBase

BLACK	BLUSH PINK	LIGHT GREY
MUSTARD	NAVY DUSK	SAGE GREEN

100% Recycled 600D Polyester | Recycled Polyester made from 100% rPET, equivalent to approx. 6 post-consumer bottles | Front pocket designed for easy decoration | External bottle pocket | Padded back panel | Roll-top closure | Webbing carry handles | Fully adjustable shoulder straps | TearAway label | Capacity: 9 litres | Delivery without decoration/content



BagBase®



BG118L | BG118L **Recycled Twin Handle Roll-Top Laptop Backpack**

100% Polyester
30 x 44 x 14 cm

BagBase

BLACK	GREY MARL	MUSTARD
NAVY DUSK		

100% Recycled 600D Polyester | Recycled Polyester made from 100% rPET, equivalent to approx. 12 post-consumer bottles | External access secure padded laptop compartment | Laptop compatible up to 15.6" | Zippered internal pocket | Front pocket organiser section | Front pocket designed for easy decoration | External bottle pocket | Padded back panel | Roll-top closure | Padded adjustable shoulder straps | Webbing carry handles | TearAway label | Capacity: 19 litres | Delivery without decoration/content





BagBase



BG545 | BG545 **Athleisure Sports Backpack**

100% Polyester
30 x 50 x 18 cm

BagBase



600D/420D Polyester | Water-resistant fabric | Wide zip opening for easy access | Front pocket organiser section | Internal slip pocket | External bottle pocket | Secure wireless headphone holder | Easy access attachment clip | Metal ventilation eyelets | Breathable padded mesh back panel | Ergonomically designed straps for everyday comfort | Padded grab handle | TearAway label | Capacity: 23 litres | Delivery without decoration/content



HALFAR
Starke Taschen.



HF8014 | 1818014 **Laptop-Rucksack Daily**

rPET
28 x 42 x 13 cm

Halfar



Urban flap rucksack | Large main compartment with zip and additional hook-and-loop flap | rPET upper material | Padded notebook compartment and flat insert pouch on the inside | Large zipped pocket on front | Two side insert compartment for e.g. drinks bottles | Padded carrying system | Handle | Contents/decorations not included



HALFAR
Starke Taschen.



HF8016 | 1818016 **Notebook-Rucksack Daily**

rPET
30 x 42 x 12 cm

Halfar



Charming square rucksack | rPET upper material | Spacious main compartment with two way zipper | Padded laptop pocket | Flat insert pocket on the inside | Side buckles for convenient opening | Buckles can be joined together to create a handle | Large zipped front pocket | Two side insert pockets for e.g. drinks bottles | Padded carrying system | Handles with press stud cuff | Contents/decorations not included



QUADRA



QD552 | QD552 **Urban Commute Backpack**

100% Polyester
28 x 46 x 14 cm

Quadra



300D Ripstop Polyester | Low-profile streamlined design | Weather-resistant roll top closure | Glove-friendly metal buckles | Quick-access zippered front pocket | Multi-purpose attachment loops | Two external bottle pockets | Padded internal laptop sleeve, compatible up to 15.6" | Enhanced visibility reflective stripes | Ergonomic breathable padded mesh back panel | Ergonomically designed straps for everyday comfort | Fully adjustable chest strap | Durable water repellent treatment for increased weather protection | PVC Free | TearAway label | Capacity: 18 litres | Delivery without content / decoration



AT109 | FIJC **Fiji Cap**

100% Polyester
One Size
200 g/m²

Atlantis

BLACK	DARK GREY	KHAKI
NAVY	OLIVE	ROYAL
WHITE		

Certified recycled Polyester Twill (made out of 4 bottles) | Structured 5 panel baseball cap with curved visor and full prostitching | Wide crown | Adjustable closure with hook & loop



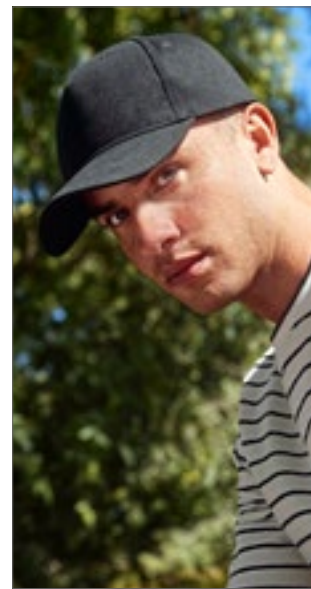
AT112 | RECF **Recy Five Cap**

100% Polyester
One Size
220 g/m²

Atlantis

BLACK	GREEN	LIGHT BLUE
LIGHT GREY	NAVY	RED
ROYAL	WHITE	YELLOW

Certified recycled Polyester Twill | Classic structured five panel baseball cap | Full prostitching | Curved visor | 4 eyelets | High quality hook & loop closure



CB62N | B62N **Organic Cotton 5 Panel Cap**

100% Cotton
One Size

Beechfield

BLACK	LIGHT GREY	NAVY
STONE	WHITE	

100% Organic Cotton Twill | 5 panel design | Structured front panels | Pre-curved peak | Stitched ventilation eyelets | Self-fabric strap with tri-glide buckle | TearAway label



CB638 | B638 **Removable Patch 5 Panel Cap**

100% Cotton
One Size

Beechfield

BLACK	DESERT SAND	GRAPHITE GREY
JUNGLE CAMO	MILITARY GREEN	

100% Cotton Twill | 5 panel design | Pre-curved peak | Interchangeable Rip-Strip™ patch designed for decoration | Stitched ventilation eyelets | Snapback size adjuster | Compatible with MOLLE BG841 Utility Sublimation Patch | Compatible with B600 Cotton | Removable Patch | TearAway label



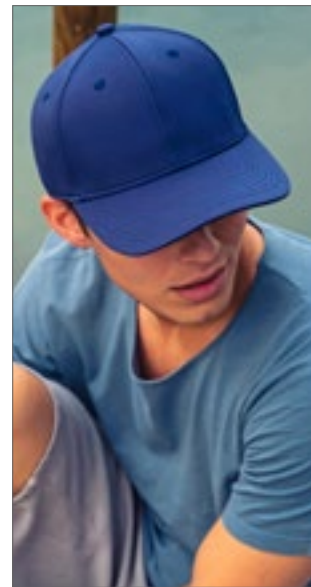
AT108 | JOSC **Joshua Cap**

100% Polyester
One Size
200 g/m²

Atlantis

BLACK	DARK GREY	KHAKI
NAVY	OLIVE	ROYAL
WHITE		

Certified recycled Polyester Twill (made out of 4 bottles) | Classic 6 panel baseball cap with curved visor and full prostitching | Adjustable closure with hook & loop



AT110 | SKYC **Skye Cap**

100% Polyester
One Size
255 g/m²

Atlantis

BLACK	DARK GREY	NAVY
ROYAL	WHITE	

Certified recycled honeycomb Polyester (made out of 2 bottles) | Structured six panel cap made of dope dyed polyester - a certified recycled fabric dyed by hot transfer without immersion in water | Full prostitching | Mid visor | 6 eyelets | High quality hook & loop closure



AT115 | FRAC **Fraser Cap**

100% Cotton
One Size
 270 g/m²

Atlantis

BLACK	CARDINAL RED	COLUMBIA BLUE	DARK GREY	KHAKI	NAVY	OLIVE	PINK	RED
WHITE								

Certified Organic Cotton Twill | Unstructured 6 panels cap | Dad cap shape with mid visor | Full metal buckle and metal hole



AT113 | RECS **Recy Six Cap**

100% Polyester
One Size
220 g/m² Atlantis

BLACK	NAVY	RED
ROYAL	WHITE	

Certified recycled Polyester Twill | Classic structured six panel baseball cap | Full prostitching | Curved visor | 6 eyelets | High quality hook & loop closure



FX110EC | 110EC **Eco Washing 110 Unstructured Alpha Cap**

98% Cotton / 2% Elastane
S/M, L/XL FLEXFIT

BLACK	KHAKI
-------	-------

Classic design | Subtle accents in plain style, eco-wash | Pre-curved visor with decorative stitching | Eyelets | Adjust with the metal buckle at the back of the head



FX110OC | 110OC **Flexfit 110 Organic Cap**

98% Cotton / 2% Elastane
One Size FLEXFIT

BLACK	DARK GREY	DARK NAVY
WHITE		

Organic Cotton | Pre-curved visor with parallel stitched seams | With fine wash on the edges | Eyelets | Flexfit buckle at the back of the head



FX6245RP | 6245RP **Recycled Polyester Dad Cap**

100% Polyester
One Size FLEXFIT

BLACK	LIGHT CHARCOAL	NAVY
-------	----------------	------

Recycled Polyester | Pre-curved visor with parallel decorative stitching | Eyelets | Adjust with the metal buckle at the back of the head



FX6277RP | 6277RP **Flexfit Recycled Polyester Cap**

97% Polyester / 3% Elastane
S/M, L/XL FLEXFIT

BLACK	KHAKI	LIGHT CHARCOAL
LODEN	NAVY	SILVER
WHITE		

Recycled Polyester | Pre-curved visor with decorative quilting | Eyelets | Fastening tab on the back of the head



FX7706FF | 7706FF **Flexfit 110 Curved Visor Snapback**

63% Polyester / 34% Cotton / 3% Elastane
One Size FLEXFIT

BLACK	BUCK	DARK GREY
GREY	HEATHER GREY	MAROON
NAVY	OLIVE	RED

Pre-curved visor with parallel decorative quilting | Snapback tab at the back of the head | Eyelets | Flexfit technology



AT111 | JAME **James Cap**

100% Polyester
One Size
 200 g/m²

Atlantis

- BLACK
- DARK GREY
- NAVY
- OLIVE
- ROYAL
- WHITE

Certified recycled Polyester Twill (made out of 4 bottles) | Structured six panel cap with full prostitching | Recycled PVC snapback closure | Old school look and flat visor shape



FLEXFIT
YUPOONG

FX180M | 180M **Flexfit Delta Carbon Cap**

100% Polyester
S/M, L/XL

FLEXFIT



Mottled colour design | Pre-curved visor without decorative quilting | Integrated Flexfit band | Eyelets



FLEXFIT
YUPOONG

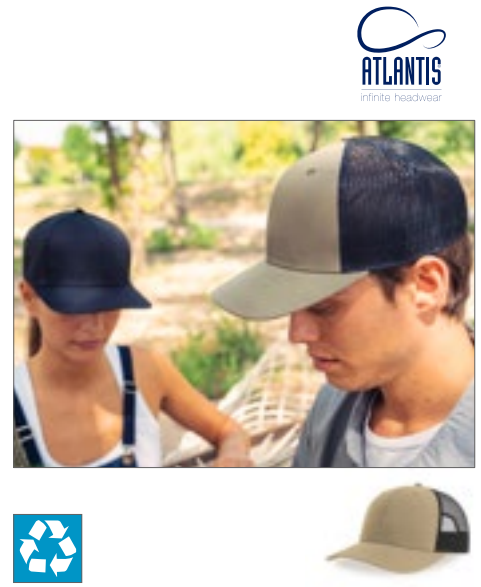
FX6089PS | 6089PS **Pencil Holder Snapback Cap**

100% Cotton
One Size

FLEXFIT



Classic design | Sturdy cotton with fine woven pattern | Straight visor with decorative stitching | Snapback tab at the back of the head | Three integrated pen holders on the left side panel | Eyelets | Contents/decorations not included



ATLANTIS
infinite headwear

AT106 | BRYC **Bryce Cap**

100% Polyester
One Size
200 g/m²

Atlantis



BLACK/BLACK	DARK GREY/BLACK
KHAKI/BLACK	NAVY/NAVY
OLIVE/BLACK	ROYAL/BLACK
WHITE/WHITE	

Main fabric: 100% certified recycled Polyester Twill / Side & Back: 100% certified recycled Polyester (made out of 3 bottles) | Classic structured 5 panel trucker cap in recycled polyester twill | Ventilated recycled mesh | Recycled PVC snapback closure | Wide crown | Light and breathable shape



ATLANTIS
infinite headwear

AT107 | ZIOC **Zion Cap**

100% Polyester
One Size
200 g/m²

Atlantis

BLACK/BLACK	DARK GREY/BLACK
KHAKI/BLACK	NAVY/NAVY
OLIVE/BLACK	ROYAL/BLACK
WHITE/WHITE	

Main fabric: 100% certified recycled Polyester Twill / Side & Back: 100% certified recycled Polyester (made out of 3 bottles) | Classic 5 panel trucker cap in recycled polyester twill | Recycled mesh | Recycled PVC snapback closure | Wide crown | Light and breathable



Beechfield
ORIGINAL HEADWEAR

CB75R | B75R **Recycled Urbanwear 6 Panel Snapback Trucker**

100% Polyester
One Size

Beechfield

BLACK	FRENCH NAVY	GRAPHITE GREY
WHITE		

100% Recycled Polyester, 100% Recycled Polyester Mesh Rear Panels | Recycled Polyester made from 100% rPET, equivalent to approx. 1.5 post-consumer bottles | 6 panel design | Structured front panels | Pre-curved peak | Snapback size adjuster | TearAway label



FLEXFIT
YUPOONG

FX8888BD | 8888BD **Batik Dye Curved Visor Cap**

100% Polyester
One Size

FLEXFIT



Slightly pre-curved visor with two-tone batik design and decorative quilting | Integrated elasticated strap at the back of the head | Velcro Fastening



CB188 | B188 **Technical Running Cap**

100% Polyester
One Size

Beechfield



75D Polyester | Lightweight, quick-drying performance fabric | Moisture wicking, ultra soft sweatband provides all-day comfort | Laser cut ventilation for enhanced breathability | Stretch-webbing adjuster with low profile clip closure | TearAway label

BEANIES & HATS



AT102 | HOLB **Holly Beanie**

60% Polyester / 40% Acrylic
One Size

Atlantis

ACID GREEN	BEIGE	BLACK
BOTTLE GREEN	BURGUNDY MELANGE	DARK GREY MELANGE
LIGHT BLUE	LIGHT GREY MELANGE	MUSTARD
NAVY	OLIVE	ORANGE
ROYAL	RUSTY	

Comfortable knitted beanie in soft Poly lana® yarn | Knitted in two layers with a straight cut | Recycled Polyester | Poly lana® Polyester - 5 litres of water were saved during production



AT103 | ANDB **Andy Beanie**

50% Polyester / 50% Acrylic
One Size

Atlantis

ACID GREEN	BEIGE	BLACK
BURGUNDY	DARK GREY MELANGE	LIGHT BLUE
LIGHT GREY MELANGE	MUSTARD	NAVY
OLIVE		

Certified recycled Polyester (made out of 1 bottle) | Fine rib-knitted beanie with regular cuff and fully fashioned top | Single knitting



AT117 | YALB **Yala Beanie**

100% Cotton
One Size

Atlantis

BLACK	BURGUNDY	LEAF GREEN
LIGHT GREY	MUSTARD	NAVY
OLIVE	ORANGE	ROYAL

Certified Organic Cotton Yarn | Allergic and natural fiber | Fine rib knitted with regular cuff and circular machine finish



BW8021 | 8021191 **Organic Cotton 24/7 Beanie**

95% Cotton / 5% Elastane
One Size

Brain Waves

BLACK	HEATHER ANTHRACITE	HEATHER LIGHT GREY	HEATHER NAVY
LIGHT PINK	NAVY	OLIVE	

Organic Cotton | Gender-neutral | Double-layer knit | Pleasant and comfortable feel



NE93057 | 093057 **Beanie 1x1 Rib**

100% Cotton
One Size

Neutral

BLACK	CHARCOAL	NAVY
-------	----------	------

Fairtrade-certified cotton | Combed organic cotton | Beanie with Cuff | Double Layer | Unisex Styling | 1x1 rib



AT100 | OAKB **Oak Beanie**

60% Polyester / 40% Acrylic
One Size

Atlantis

ACID GREEN	BEIGE	BLACK	BURGUNDY MELANGE	DARK GREY MELANGE	LIGHT BLUE	LIGHT GREY MELANGE	MUSTARD	NAVY
OLIVE	RUSTY							

Chunky rib-knitted beanie in soft, warm Polylna® yarn | Single-layer knitting with wide folded cuff and fully fashioned top | Recycled Polyester | Polylna® Polyester - 9 litres of water were saved during production

BEANIES & HATS



AT101 | MAPB **Maple Beanie**

60% Polyester / 40% Acrylic
One Size

Atlantis

BEIGE	BLACK	BURGUNDY MELANGE
DARK GREY MELANGE	LIGHT GREY MELANGE	MUSTARD
NAVY	OLIVE	ROYAL

Knitted beanie in Polylana® | Warm, comfortable and sustainable | Finished with a fully fashioned top and patterned with an elegant rib-knitted cuff | Recycled Polyester | Polylana® Polyester - 7 litres of water were saved during production



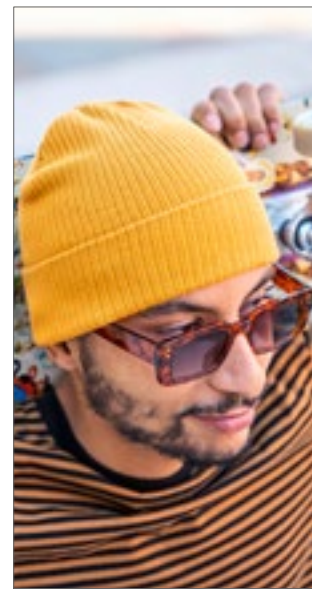
AT104 | BIRB **Birk Beanie**

100% Polyester
One Size
230 g/m²

Atlantis

BLACK	DARK GREY	NAVY
ROYAL		

Certified recycled Polyester (made out of 2 bottles) | Soft and comfortable polar fleece beanie with a straight cut | Light and warm



AT116 | NELB **Nelson Beanie**

100% Cotton
One Size

Atlantis

BLACK	BURGUNDY	LEAF GREEN
LIGHT AVID	LIGHT GREY	MUSTARD
NAVY		

Certified Organic Cotton Yarn | Allergic and natural fiber | Fine rib knitted with regular cuff and flat machine finish



CB370 | B370 **Merino Beanie**

100% Wool
One Size

Beechfield

BLACK	MILITARY GREEN	STEEL BLUE
-------	----------------	------------

100% Merino Wool | Merino wool is breathable, wicking and temperature regulating | Naturally anti-bacterial and odour resistant | Lightweight performance fit | Quick drying | Double layered cuff for added warmth and comfort | Flat seams | TearAway adhesive fabric label



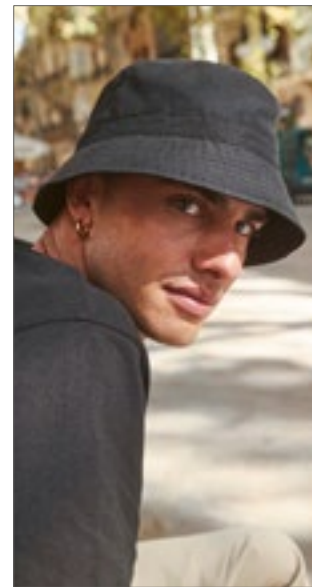
AT120 | POWB **Powell Bucket Hat**

100% Cotton
One Size
260 g/m²

Atlantis

BLACK	DARK GREY	KHAKI
NAVY	OLIVE	WHITE

60% certified recycled Cotton / 40% virgil Cotton Twill | Short and steep brim | Two eyelets on the back for more ventilation



CB84R | B84R **Recycled Polyester Bucket Hat**

100% Polyester
S/M, L/XL

Beechfield

BLACK	FRENCH NAVY	MIDNIGHT CAMO
OLIVE GREEN		

100% Recycled Polyester | Recycled Polyester made from 100% rPET, equivalent to approx. 1.5 post-consumer bottles | Unisex styling | Stitched ventilation eyelets | Elasticated cord size adjuster with toggle | TearAway label



Beechfield
ORIGINAL HEADWEAR



CB90N | B90N

Organic Cotton Bucket Hat

100% Cotton
S/M, L/XL

Beechfield



100% Organic Cotton Twill | Protection against sun-light - UPF50+ | Unisex styling | Stitched ventilation eyelets | TearAway label



FLEXFIT
YUPOONG



FX5003BD | 5003BD

Batik Dye Reversible Bucket Hat

100% Polyester
One Size

FLEXFIT



Flat brim with decorative seams and edged eyelets | Reversible: two-tone batik pattern on one side, plain black on the other



FLEXFIT
YUPOONG



FX5003EA | 5003EA

Elastic Adjuster Bucket Hat

100% Polyester
One Size

FLEXFIT



Classic design | Drawstring with toggle | Flat brim with parallel decorative quilting | Eyelets



FLEXFIT
YUPOONG



FX5003LN | 5003LN

Light Nylon Bucket Hat

100% Nylon
One Size

FLEXFIT



Classic design | Slightly shimmering | Flat brim with parallel decorative quilting



FLEXFIT
YUPOONG



FX5003OE | 5003OE

Open Edge Bucket Hat

100% Cotton
One Size

FLEXFIT



Classic design | Edge of the flat brim is frayed and without decorative seams | Durable, skin-friendly cotton | Eyelets



FLEXFIT
YUPOONG



FX5005ET | 5005ET

Eco Washing Flexfit Notop Tennis Hat

98% Cotton / 2% Elastane
One Size

FLEXFIT



Skin-friendly cotton | Crown made of six panels with a wrap-around sweatband | Flat brim with dense decorative quilting | Plain look with fine wash | Eyelets



AT105 | HOTR **Hotty-S Neck Warmer**

100% Polyester
25 x 28 cm
230 g/m²

Atlantis



Certified recycled Polyester (made out of 2.5 bottles) | Versatile and light neck warmer in comfortable polar fleece with moisture management properties | Cord adjuster on the top edge for full closure



BY200 | BY200 **Organic Cotton Tubescarf**

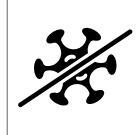
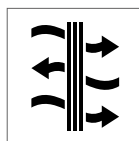
95% Cotton / 5% Elastane
One Size

Build Your Brand



Tube scarf made from organic cotton

Beechfield
ORIGINAL HEADWEAR



CB916 | B916 **Morf® Merino**

100% Wool
One Size

Beechfield



100% Merino Wool | Merino wool is breathable, wicking and temperature regulating | Naturally anti-bacterial and odour resistant | Quick drying | Multi-purpose use | Flat seams | Beechfield makes no warranties, either express or implied, that the product prevents infection or the transmission of viruses or diseases





FT100BN | 92UA-7477B-5 **Organic Cozy Bath Sheet**

100% Cotton
100 x 150 cm
450 g/m²

Fair Towel

BLACK	BURGUNDY	COBALT BLUE	DARK GREY
GRASS GREEN	LIGHT GREY	NAVY	RED
SUNFLOWER YELLOW	TURQUOISE	WHITE	

Fairtrade-certified cotton | Organic Cotton | Pleasantly soft touch | Great moisture absorption | Fairtrade towel label beneath loop, central on short edge | 8-cm border | Diagonally striped hem



FT100DN | 92UA-7477B-4 **Organic Cozy Bath Towel**

100% Cotton
70 x 140 cm
450 g/m²

Fair Towel

BLACK	BURGUNDY	COBALT BLUE	DARK GREY
GRASS GREEN	LIGHT GREY	NAVY	RED
SUNFLOWER YELLOW	TURQUOISE	WHITE	

Fairtrade-certified cotton | Organic Cotton | Pleasantly soft touch | Great moisture absorption | Fairtrade towel label beneath loop, central on short edge | 8-cm border | Diagonally striped hem



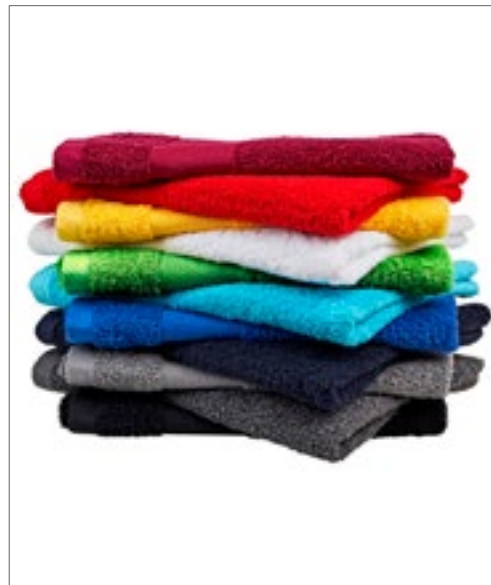
FT100GN | 92UA-7477B-6 **Organic Cozy Guest Towel**

100% Cotton
30 x 50 cm
450 g/m²

Fair Towel

BLACK	BURGUNDY	COBALT BLUE	DARK GREY
GRASS GREEN	LIGHT GREY	NAVY	RED
SUNFLOWER YELLOW	TURQUOISE	WHITE	

Fairtrade-certified cotton | Organic Cotton | Pleasantly soft touch | Great moisture absorption | Fairtrade towel label beneath loop, central on short edge | 4-cm border | Diagonally striped hem



FT100HN | 92UA-7477B-0 **Organic Cozy Hand Towel**

100% Cotton
50 x 100 cm
450 g/m²

Fair Towel

BLACK	BURGUNDY	COBALT BLUE	DARK GREY
GRASS GREEN	LIGHT GREY	NAVY	RED
SUNFLOWER YELLOW	TURQUOISE	WHITE	

Fairtrade-certified cotton | Organic Cotton | Pleasantly soft touch | Great moisture absorption | Fairtrade towel label beneath loop, central on short edge | 8-cm border | Diagonally striped hem

TERRY TOWELLING



VOSSEN
A TOUCH OF ENERGY



XF118B | 118768 **Balance Bath Sheet**

85% Cotton / 15% true hemp
100 x 150 cm
570 g/m²

Vossen

COSMOS	FERN	FOX
LAKE	LAVASTONE	LEMON DROP
LIGHT GREY	POSEIDON	RAFFIA
SAND	TERRA	URBAN GREY
WHITE	WINTERNIGHT	

Organic Cotton | Timeless design | Highly absorbent | Ecologically produced | Hemp: antibacterial effect



VOSSEN
A TOUCH OF ENERGY



XF118D | 118767 **Balance Bath Towel**

85% Cotton / 15% true hemp
67 x 140 cm
570 g/m²

Vossen

COSMOS	FERN	FOX
LAKE	LAVASTONE	LEMON DROP
LIGHT GREY	POSEIDON	RAFFIA
SAND	TERRA	URBAN GREY
WHITE	WINTERNIGHT	

Organic Cotton | Timeless design | Highly absorbent | Ecologically produced | Hemp: antibacterial effect



VOSSEN
A TOUCH OF ENERGY



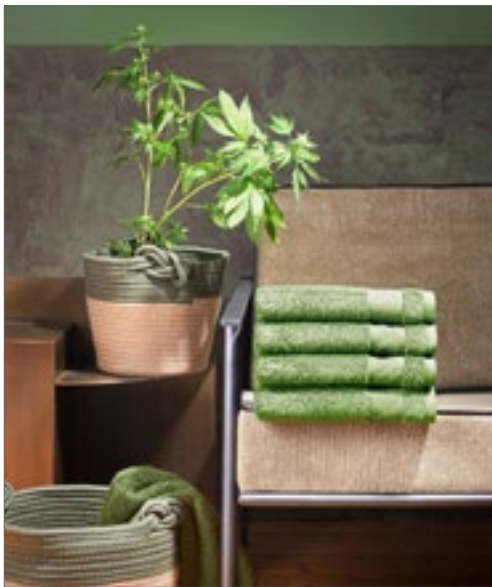
XF118G | 118764 **Balance Guest Towel**

85% Cotton / 15% true hemp
30 x 50 cm
570 g/m²

Vossen

COSMOS	FERN	FOX
LAKE	LAVASTONE	LEMON DROP
LIGHT GREY	POSEIDON	RAFFIA
SAND	TERRA	URBAN GREY
WHITE	WINTERNIGHT	

Organic Cotton | Timeless design | Highly absorbent | Ecologically produced | Hemp: antibacterial effect



VOSSEN
A TOUCH OF ENERGY



XF118H | 118765 **Balance Hand Towel**

85% Cotton / 15% true hemp
50 x 100 cm
570 g/m²

Vossen

COSMOS	FERN	FOX	LAKE
LAVASTONE	LEMON DROP	LIGHT GREY	POSEIDON
RAFFIA	SAND	TERRA	URBAN GREY
WHITE	WINTERNIGHT		

Organic Cotton | Timeless design | Highly absorbent | Ecologically produced | Hemp: antibacterial effect



VOSSEN
A TOUCH OF ENERGY



XF118W | 118762 **Balance Wash Glove**

85% Cotton / 15% true hemp
22 x 16 cm
570 g/m²

Vossen

COSMOS	FERN	FOX	LAKE
LAVASTONE	LEMON DROP	LIGHT GREY	POSEIDON
RAFFIA	SAND	TERRA	URBAN GREY
WHITE	WINTERNIGHT		

Organic Cotton | Timeless design | Highly absorbent | Ecologically produced | Hemp: antibacterial effect



ARTG



THE ONE
TOWELLING



AR028 | 28.5 **Robezz® Waffle Bathrobe With Hood**

100% Cotton
XS, S/M, L/XL, XXL, 3XL, 4XL

A&R

ANTHRACITE GREY	AQUA BLUE	ARMY GREEN	BLACK
DEEP BLUE	FIRE RED	FRENCH NAVY	GRAPHITE
JEANS BLUE	LIGHT GREY	LIGHT PINK	OLD PINK
PINK	TERRA	TRUE BLUE	WHITE

100% waffle terry cotton | With a hood | Two slit pockets on the front | With a belt in matching color | Long lasting, durable and permanently soft | Perfect comfort and super absorbency | Quick drying ability | Generous loose-fitting | Sizes are very large, order a model if necessary | White and Light colors washable at 60°, dark colors washable at 40°

TH1700 | T1-SLIPPER **Slippers**

100% Cotton
Kids 30/32, 38/40, 42/44
675 g/m²

The One Towelling®

Kids 30/32, 38/40, 42/44

WHITE/WHITE

38/40, 42/44

WHITE/ANTHRACITE

WHITE/BLACK

WHITE/BURGUNDY

WHITE/NAVY BLUE

WHITE/TAUPE

Combed cotton (terry) | Very soft | High absorption | Waffle pattern sole



ARTG



AR714 | 714.5 **PRINT-Me® GOLF Towel**

100% Cotton
30 x 50 cm
450 g/m²

A&R

ANTHRACITE GREY	BLACK	DARK GREEN
FRENCH NAVY	GRAPHITE	

Quality cotton | Wide border which is flat woven, border width: 8 cm | Made ECO-friendly | Easy care



ARTG



AR814 | 814.5 **SUBLI-Me® GOLF Towel**

100% Cotton / Border: 100% Polyester
30 x 50 cm
450 g/m²

A&R

ANTHRACITE GREY	BLACK	DARK GREEN
FRENCH NAVY	GRAPHITE	

Quality cotton | The sublimation band is made of 100% Polyester (approx. 10 cm) | Hook in the corner | Made ECO-friendly | Easy care



THE ONE
TOWELLING



TH1500 | T1-GOLF **Golf Towel**

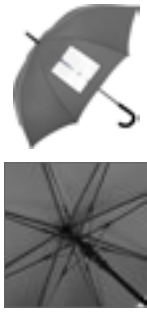
100% Cotton
40 x 50 cm
450 g/m²

The One Towelling®

ANTHRACITE	BLACK	GREEN
LIME GREEN	MAGENTA	NAVY BLUE
ORANGE	RED	ROYAL BLUE
TURQUOISE	WHITE	

Combed cotton (terry) | Golf towel in terry velvet with metal eyelet and including carabiner | Very soft | Velour finish on the outside and moisture absorbent on the inside | Washable up to 40°

UMBRELLAS



FA1119 | 1119

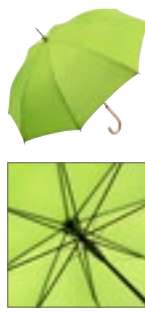
AC-Umbrella FARE®-View

Cover: 100% Polyester
Diameter: approx. 105 cm / Length: approx. 88 cm

FARE

BLACK	GREY	NAVY BLUE
RED		

Canopy: 100% polyester-pongee; Handle: plastic | Convenient automatic function for quick opening | High-quality windproof system for maximum frame flexibility in stronger gusts of wind | Flexible fibreglass ribs | Stable steel shaft | Soft-touch handle and top | Handle with integrated release button and promotional labelling option | Higher corrosion protection due to black electroplating of the steel shaft | Transparent viewing window in one panel



FA1134 | 1134

AC-Umbrella OekoBrella

Cover: 100% Polyester
Diameter: approx. 100 cm / Length: approx. 85 cm

FARE

BLACK	GREY	LIME
NAVY BLUE	RED	WHITE

Canopy: 100% polyester-pongee (recycled) | Convenient automatic function for quick opening | Windproof features for higher frame flexibility and improved stability in windy conditions | Flexible fibreglass ribs | Real wood tips | Rounded hook handle made from real wood | Higher corrosion protection due to black electroplating of the steel shaft



FA5029 | 5029

Mini-Pocket Umbrella OekoBrella

Cover: 100% Polyester
Diameter: approx. 98 cm / Length: approx. 26,5 cm

FARE

BLACK	GREY	LIME
NAVY BLUE	RED	WHITE

Canopy: 100% polyester-pongee (recycled), handle: real wood, shaft: steel | Easy to use thanks to safety runner | High-quality windproof system for maximum frame flexibility in stronger gusts of wind | Real wood handle, promotional logo can be added



DRF24 | DRF24

Polyester Seat For Folding Stool

100% Polyester
32 x 44 cm
220 g/m²

DreamRoots

ARAL 25	BLACK 1	BROWN 22
BURGUNDY 24	CHARCOAL 2	GREY 23
MANGO 40	NAVY 4	ORANGE 8
PALE GREY 3	PINK 14	RED 10
ROYAL 5	WHITE 33	YELLOW 35

Sizes: 32 x 44 cm, weight: 50 g | 100% waterproof Polyester | Packed in foil | Durable Adventure fabric waterproof | Ideal for sublimation and transfer, it does not shrink while the print is fusing | Fabric is resistant to sunlight



DRL18 | DRL18

Folding Stool Frame

50 x 30 x 7 cm

DreamRoots

Size: 50 x 30 x 7 cm, weight: 1,5 kg | Weight allowance 110 kg | Wooden Beech Frame | Riveted Frame | Replaceable fabric for the Stool Frame | Durable solid wooden structure | Frame packed in foil | Cover separately available (DRF24)



MBW170006 | M170006

MiniFeet® Dog Toy Chicken

100% Polyester, Inner: Polyvinyl chloride
20 x 15 x 9,5 cm (Length x Width x Height)

Mbw

BROWN

Material: polyester; Filling: polyester fibres; Inside: PVC film | Crackle function | EN 71



MBW170008 MiniFeet® Dog Toy Bone With Squeak Function

100% Polyester, Inner: Polyvinyl chloride
22 x 12,5 x 3 cm (Length x Width x Height)

CREME

Material: polyester; Filling: polyester; Inside: PVC | Squeak function | EN 71



MBW170009 MiniFeet® Dog Toy Bone With Crackle Function

100% Polyester, Inner: Polyvinyl chloride
22 x 12,5 x 3 cm (Length x Width x Height)

BROWN

Material: polyester, Filling: polyester fibres, Inside: PVC film | Crackle function | EN 71



MBW170020 MiniFeet® Dog Toy Knotted Animal Donkey

100% Polyester
11 x 17 x 8 cm (Length x Width x Height)

GREY

Robust | Proven quality | Suitable for large and small dogs | Also ensures oral hygiene and keeps your dog's breath fresh. Chewing increases salivation and contributes towards a healthy dog's mouth. | EN 71

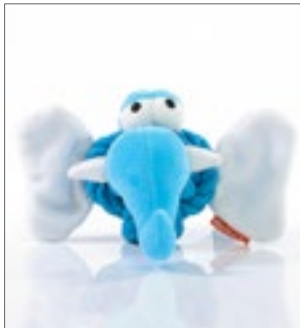


MBW170021 MiniFeet® Dog Toy Knotted Animal Rabbit

100% Polyester
10,5 x 8 x 12,5 cm (Length x Width x Height)

PINK

Robust | Tested quality | Suitable for large and small dogs | Also ensures mouth hygiene and keeps your dog's breath fresh. Chewing increases salivation and contributes towards a healthy dog's mouth. | EN 71



MBW170022 MiniFeet® Dog Toy Knotted Animal Elephant

100% Polyester
12,5 x 16 x 7 cm (Length x Width x Height)

BLUE

Robust | Tested quality | Suitable for large and small dogs | Also ensures mouth hygiene and keeps your dog's breath fresh. Chewing increases salivation and contributes towards a healthy dog's mouth. | EN 71



MBW170023 MiniFeet® Dog Toy Knotted Animal Wild Boar

100% Polyester
10 x 13,5 x 8 cm (Length x Width x Height)

RED

Robust | Tested quality | Suitable for large and small dogs | Also ensures mouth hygiene and keeps your dog's breath fresh. Chewing increases salivation and contributes towards a healthy dog's mouth. | EN 71



MBW170030 MiniFeet® Dog Toy Owl

100% Polyester, Inner: Polyvinyl chloride
27,5 x 23,5 x 5 cm (Length x Width x Height)

BLUE

Material: polyester; Inside: PVC film | With details made of jute | With dot elements | Crackle function | With loops for fixing to your keys | EN 71



MBW170031 MiniFeet® Dog Toy Ghost

100% Polyester, Inner: Polyvinyl chloride
28,5 x 14 x 5 cm (Length x Width x Height)

GREEN

Material: polyester, Inside: PVC film | With details made of jute | With node elements | Crackle function | With loops for fixing to your keys | EN 71

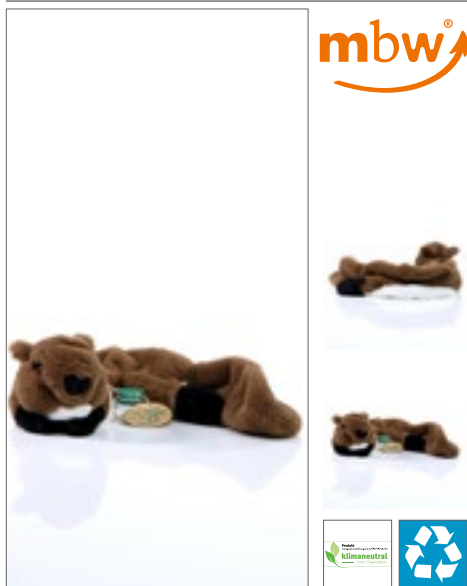


MBW170032 MiniFeet® Dog Toy Monster

100% Polyester, Inner: Polyvinyl chloride
28 x 25,5 x 5,5 cm (Length x Width x Height)

PINK

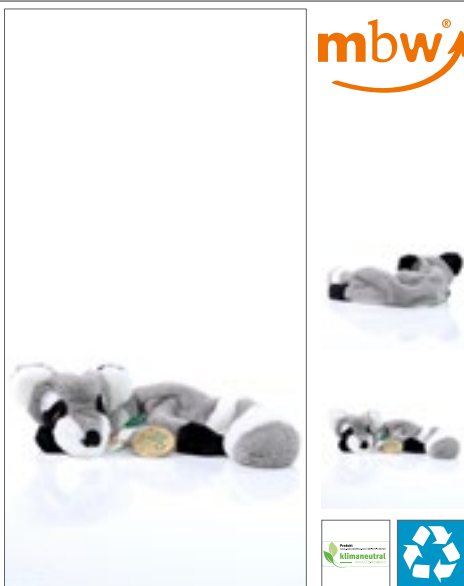
Material: polyester, Inside: PVC film | With details made of jute | With node elements | Crackle function | With loops for fixing to your keys | EN 71



MBW170040 | M170040 **MiniFeet® Dog Toy RecyclBeaver**

100% Polyester
56 x 20 x 7 cm (Length x Width x Height)

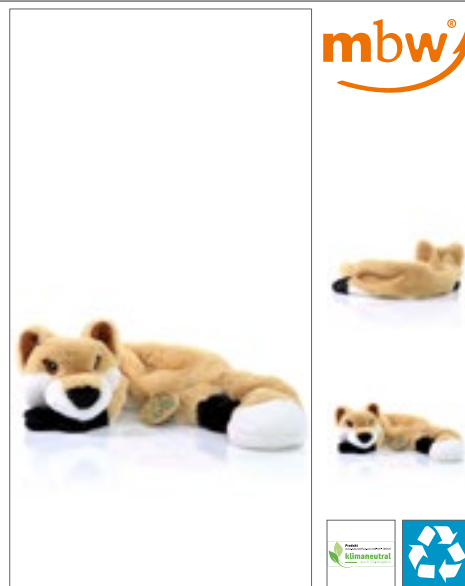
Mbw



MBW170041 | M170041 **MiniFeet® Dog Toy RecyclRaccoon**

100% Polyester
59 x 21 x 7 cm (Length x Width x Height)

Mbw



MBW170042 | M170042 **MiniFeet® Dog Toy RecyclFox**

100% Polyester
59 x 19 x 7 cm (Length x Width x Height)

Mbw

BROWN

Made from 100% used and recycled PET bottles | Embroidered eyes and nose | Climate-neutral | Sustainability | EN 71 | Suitable for medium-sized and large dogs

GREY

Made from 100% used and recycled PET bottles | Embroidered eyes and nose | Climate neutral | Sustainability | EN 71 | Suitable for medium-sized and large dogs

BEIGE

Made from 100% used and recycled PET bottles | Embroidered eyes and nose | Climate neutral | Sustainability | EN 71 | Suitable for medium-sized and large dogs



MBW160450 | M160450 **Schmoozies® Santa's Boot**

100% Polyester, Underside: microfibre
11 x 7,5 x 10 cm (Length x Width x Height)

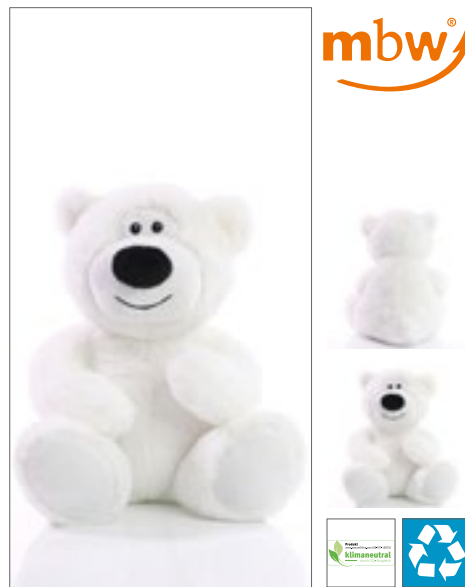
Mbw



MBW160451 | M160451 **Schmoozies® Christmas Tree**

100% Polyester, Underside: microfibre
4 x 8,5 x 9,5 cm (Length x Width x Height)

Mbw



MBW160951 | M160951 **MiniFeet® RecyclBear® Ice**

100% Polyester
M: 19,5 x 20,5 x 23 cm (Length x Width x Height)

Mbw

RED

Underside made of microfibre for cleaning smooth surfaces, such as mobile phone displays and glass screens | Design protection throughout the EU | Logo is printed on a tag that is attached to the underside of the product

GREEN

Underside made of microfibre for cleaning smooth surfaces, such as mobile phone displays and glass screens | Design protection throughout the EU | Logo is printed on a tag that is attached to the underside of the product

WHITE

Recyclable bear made from 100% used and recycled PET bottles | The eyes and noses of the bears are embroidered, no additional plastic parts are used. As a result, they too can undergo further recycling and protect the environment | Depending on the size of the article, around 4 to 6 PET bottles (500 ml) are used to manufacture the material | Main material: 100% recycled polyester, Filling material: 100% recycled polyester fibres | Design protection | Sustainability | EN 71 | Bear wears shirt size L



MBW160952 **MiniFeet®**
RecycleBear® Nature

100% Polyester
M: 19,5 x 22 x 24 cm (Length x Width x Height)

BROWN

Recyclable bear made from 100% used and recycled PET bottles | The eyes and noses of the bears are embroidered, no additional plastic parts are used. As a result, they too can undergo further recycling and protect the environment | Depending on the size of the article, around 4 to 6 PET bottles (500 ml) are used to manufacture the material | Main material: 100% recycled polyester, Filling material: 100% recycled polyester fibres | Design protection | Sustainability | EN 71 | Bear wears shirt size L



MBW160953 **MiniFeet®**
RecycleRabbit®

100% Polyester
S (21 x 18,5 x 20 cm), M (26 x 21 x 25 cm)

CREME

Made from 100% used and recycled PET bottles | The eyes and nose are embroidered, no additional plastic parts are used. As a result, they too can undergo further recycling and protect the environment | Depending on the size of the article, around 4 to 6 PET bottles (500 ml) are used to manufacture the material | Main material: 100% recycled polyester, Filling material: 100% recycled polyester fibres | Design protection | Sustainability | EN 71 | Bunny size S wears shirt size M, bunny size M wears shirt size L | Seat height: S: 20 cm, M: 25 cm



MBW161302 **Schmoozies®**
Snowman

100% Polyester, Underside: microfibre
8,5 x 6 x 7,55 cm (Length x Width x Height)

WHITE

Underside made of microfibre for cleaning smooth surfaces, such as mobile phone displays and glass screens | Design protection throughout the EU | Logo is printed on a tag that is attached to the underside of the product



MM061 **Print Me Eco Polar**
Bear

100% Polyester
M

WHITE

100% Recycled Polyester, 100% Recycled Polyester stuffing, Plush | Sewn eyes and nose | Soft plush white tummy for vinyl and sublimation printing | Can also be worn with the medium size T Shirts and Jumpers from the Mumbles Clothing collection | Complies with EN71 | Remove all hang tags and their fasteners before giving these items to a child | Suitable for all ages



MM572 **Zippie Sloth**

100% Polyester
L

BROWN

Plush | Zippie has removable inner pad & Zip access | Zippie suitable for embroidery, Sublimation print and Vinyl printing | Hook and loop fastening on paws on Zippie only | Flat surface on Tummy for decoration | Complies with EN71 | Suitable for all ages



MM574 **Zippie Koala Bear**

100% Polyester
L (43 cm)

GREY

Plush | Sewn eyes | Zippie has removable inner pad & Zip access | Zippie suitable for embroidery, Sublimation print and Vinyl printing | Flat surface on Tummy for decoration | Complies with EN71 | Suitable for all ages



MM575 **Zippie Kangaroo**

100% Polyester
L (38 cm)

MID BROWN

Plush | Zippie has removable inner pad & Zip access | Zippie suitable for embroidery, Sublimation print and Vinyl printing | Flat surface on Tummy for decoration | Complies with EN71 | Suitable for all ages



MM576 **Zippie Lamb**

100% Polyester
L

CREAM

Plush | Zippie has removable inner pad & Zip access | Zippie suitable for embroidery, Sublimation print and Vinyl printing | Flat surface on Tummy for decoration | Complies with EN71 | Suitable for all ages



MM751 **Animal Blanket**

100% Polyester
77 x 77 cm

BUNNY CREAM ELEPHANT GREY

Plush | Childrens blanket | Suitable for sublimation print, Vinyl printing or embroidery | Zip access for decoration purposes | Flat surface for decoration | Soft animal head at one corner | Sewn eyes | Complies with EN71 | Suitable for all ages | YKK Zippers

INDICATIONS

A Word about Printing on Your Textiles

Please note, that in garments whose washing and care instructions indicate a higher laundry temperature than 40° C, this information is rendered invalid once the garment has been printed on. We generally advise you to wash your printed textiles at no temperature above 40° C so as not to affect the quality of the printing.

Color Designations, Sizes and Laundry Properties

Color designations and sizes that appear in this catalog are not regulated by any industry standards. This can mean e.g. that a T-shirt in size XL made by manufacturer A can have quite different measurements than a T-shirt in size XL made by manufacturer B. Even within the same brand, different articles (e.g. polo shirts and T-shirts) can have different measurements although they are identified by the same size. Especially the so-called Slim-Fit/Body-Fit Shirts may diverge in size from the unisex articles of the same brand. Similar rules apply to shirts for women and men of the same manufacturer. It goes without saying that women's shirts are cut in a different style than the respective men's shirts although their size designations may be completely identical. Color designations are often not really informative. This already starts with the name itself. But even with color names about which most consumers have an image in their mind, there are often divergencies. Royal Blue or Apple Green are colors that conjure up different pictures in different people's minds. There simply is no binding industry standard for colors. So it may happen that the same color designation may look completely different from one product to the next between different brands or even between different articles of the same brand. Unfortunately, this issue cannot be solved by the color bars printed here in this catalog. Each printed color bar will appear differently depending on the ambient light source, and textile colors cannot be rendered 100% truly when printed on paper. So before you order a larger quantity of textiles and especially before you start printing or embroidering them, we encourage you to order a sample item. We cannot accept any complaints due to subjective expectations of sizes or colors. We'd like to draw your attention to one further important point that cannot be stressed enough: each textile article made from cotton or a cotton and polyester mix fabric needs to be laundered before it is put on and worn for the first time. Due to the chemical residues on textiles (although completely harmless and safe in themselves) it may otherwise happen that when the textiles are worn without having been laundered before, especially under the influence of ultraviolet rays, a chemical reaction between the residues and the body's perspiration takes place, affecting or even impairing the color of the garment. These color changes will persist and cannot be remedied by later laundering. Please note that claims or complaints in this matter cannot be accepted.

Information about battery disposal

In connection with the sale of batteries or the delivery of equipment that contains batteries, we are obliged to draw your attention to the following. You are legally required as an end user to return used batteries. You can hand in old batteries, which we stock or have stocked as new batteries in our range, at our warehouse (address) or mail them back to us free of charge. Alternatively we suggest you use the public collection points that have been set up in your neighbourhood. The symbols shown on batteries have the following meanings. The crossed out rubbish bin symbol means you must not put the battery in household waste.

Pb = Battery contains more than 0.004 per cent lead

Cd = Battery contains more than 0.002 per cent cadmium

Hg = Battery contains more than 0.0005 per cent mercury.

Please observe the information provided above.

Underwear may never be returned or exchanged.

Unpacked shirts/blouses may not be exchanged or returned.

Shipping umbrellas from length 60 cm in separate boxes.

Masks and hygiene products may never be returned or exchanged

SOL'S
the fair spirit

JustHoods
RWDib

TEE JAYS

BELLA+CANVAS

KUSTOM KIT

JAMES &
NICHOLSON

Stedman
collection

Beechfield
ORIGINAL HEADWEAR

Neutral.
Certified Responsibility™

ATLANTIS
Summer Festivals

KARLOWSKY

mantis

PREMIER

BUILD YOUR
BRAND

FLEXFIT
yfl SUPPLIES

BSN
SF

ROLY

Westford
Mill

BagBase

Mumbles

korntex

promodoro

JustCool
RWDib

QUADRA

miners
mate

seidensticker

HALFAR
Starke Taschen.

VOSSEN
A TOUCH OF ENERGY

JHK
T-SHIRT

mantis
kids

TOWEL
CITY

REGATTA
PROFESSIONAL

NL | NEXT LEVEL
APPAREL

INDEPENDENT

ARTG

BUILD YOUR BRAND
BASIC

GENUINE RECYCLED

eco
ROLY

WORK-GUARD
by Result

BABYBUGZ

HRM
Style it. Superior. Made for best.

ROLY
FOOTWEAR

Dennys
LONDON

mbw

larkwood
Baby and Toddler Collection

LeChef
PROFESSIONAL

ROLY Sport.

bargear

FAIR
TOWEL
Fair good. Stay fair.

CG
WORKWEAR

JustTs
RWDib

DREAM
ROOTS

TOMBO

BURNSIDE

LeChef
PREP

CRAGHOPPERS
EXPERT

THE ONE
TOWELLING

Tiger
Cotton